

OPERATOR'S MANUAL

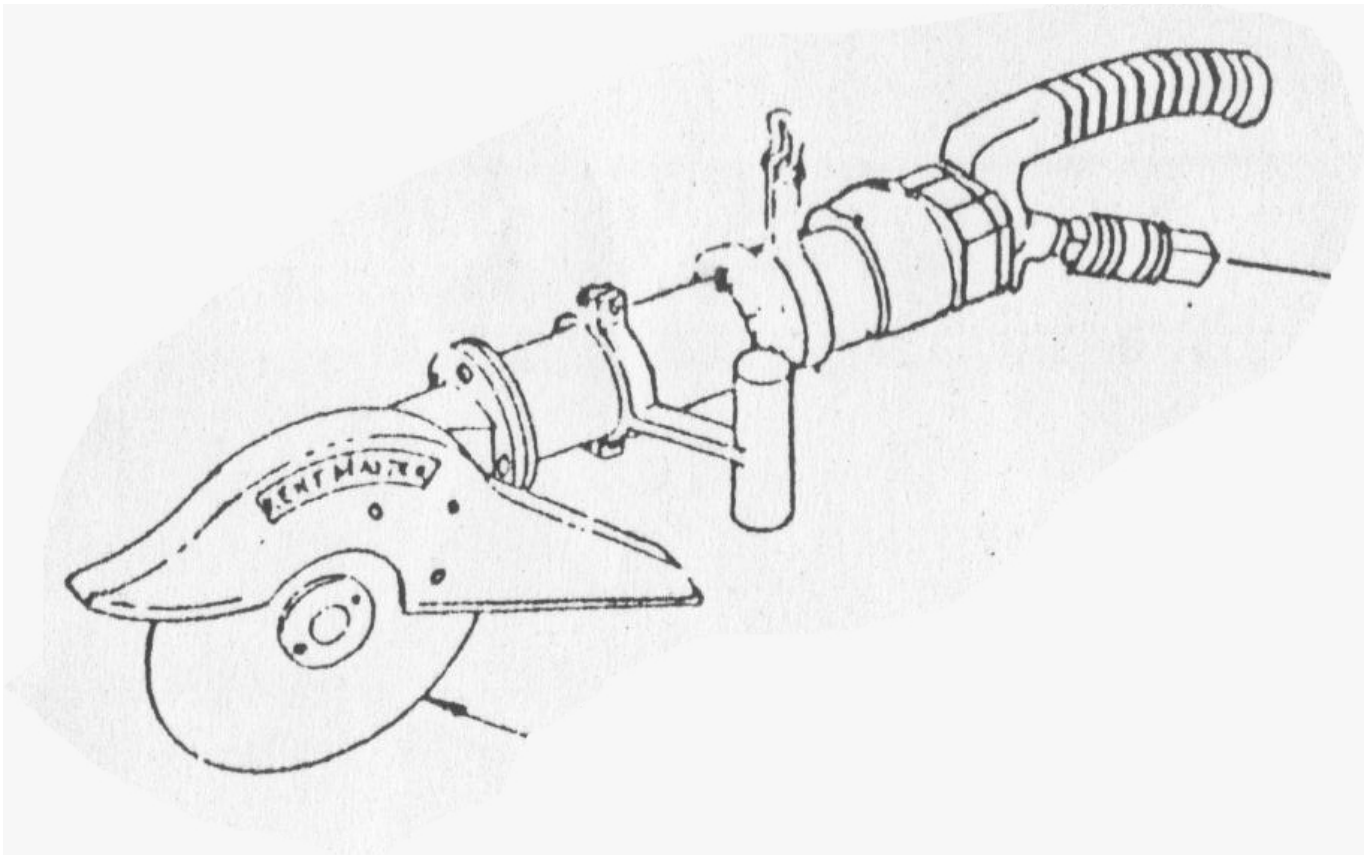
INCLUDING: OPERATION, INSTRUCTION, INSTALLATION, MAINTENANCE AND PARTSBOOK

**IMPORTANT: READ THIS MANUAL CAREFULLY BEFORE INSTALLING, OPERATING OR
SERVICING THIS TOOL.**

AIR HOG BRISKET SAW "AHB"

TOOL DATA

MODEL: AHB
ASSEMBLY NO. 6002300
TYPE: AIR OPERATED
NET WEIGHT: 24 LBS (11 KG)
INLET AIR PRESSURE: 100 P.S.I. (6-7 BARS)



KENTMASTER MFG. CO., INC. 1801 SOUTH MOUNTAIN AVE., MONROVIA, CALIFORNIA 91016 UNITED STATES OF AMERICA

☎ TELEPHONE: (626) 359-8888 FAX: (626) 303-5151

**WARNING**

= Hazards or unsafe practices which could result in severe personal injury, death or substantial property damage.

**CAUTION**

= Hazards or unsafe practices which could result in minor personal injury, product or property damage.

**NOTICE**

= Important installation, operation or maintenance information.

OPERATING AND SAFETY INSTRUCTIONS

**WARNING**

DO NOT OPERATE THIS TOOL UNTIL YOU HAVE READ AND UNDERSTOOD THE SAFETY INSTRUCTIONS AND OPERATING MANUALS.

**WARNING**

DO NOT OPERATE THIS TOOL UNTIL YOU HAVE RECEIVED TRAINING IN THE HANDLING, OPERATION AND USE OF THIS TOOL.

**WARNING**

STOP USING A MALFUNCTIONING OR DEFECTIVE TOOL IMMEDIATELY. REPORT ANY PROBLEMS OR DEFECTS TO YOUR SUPERVISOR FOR REMOVAL OF THE TOOL FROM SERVICE.

**WARNING**

DO NOT ATTEMPT TO REPAIR THE TOOL YOURSELF.

**WARNING**

DO NOT ALLOW UNAUTHORIZED PERSONS TO USE TOOL.

**WARNING**

REMOVE AND DISCONNECT POWER FROM THE TOOL WHEN TOOL IS LEFT UNATTENDED OR IS NOT IN USE.

**WARNING**

NEVER TIE DOWN, BYPASS, ALTER OR MODIFY THE ACTIVATING SWITCHES OR TRIGGERS OF THIS TOOL.

**WARNING**

NEVER MAKE ALTERATIONS OR MODIFICATIONS TO THIS TOOL.

**WARNING**

BE CONSTANTLY AWARE AND ALERT FOR UNSAFE CONDITIONS AND REPORT THEM IMMEDIATELY TO YOUR SUPERVISOR.

**WARNING**

NEVER PLACE YOUR HAND OR ANY PART OF YOUR BODY IN THE CUTTING PATH OF THE TOOL.

**WARNING**

NEVER ALLOW ANYONE ELSE TO PLACE THEIR HANDS OR ANY PART OF THEIR BODY IN THE CUTTING PATH OF THE TOOL.

**WARNING**

DO NOT ACTIVATE CONTROL SWITCHES OR TRIGGERS OF THIS TOOL UNLESS YOU INTEND TO TEST OR OPERATE THIS TOOL.

**WARNING**

DO NOT USE THIS TOOL FOR ANY PURPOSE OTHER THAN IT'S INTENDED PURPOSE.

**CAUTION**

WHEN OPERATING THIS TOOL WEAR THE PROTECTIVE GEAR AND SAFETY EQUIPMENT SUPPLIED TO YOU.

**WARNING**

THE NOISE EMISSION (SOUND PRESSURE LEVEL) AT THE WORKSTATION MAY EXCEED 80 dB (A). EAR AND SOUND PROTECTION GEAR IS REQUIRED.

OPERATING INSTRUCTIONS

⚠ WARNING ONLY TRAINED PERSONNEL ARE TO OPERATE THIS TOOL.

1. TO ENSURE TOOL IS OPERATING PROPERLY, PERFORM FOLLOWING STEPS AT START OF EACH SHIFT:
 - MAKE SURE TOOL MOVES UP AND DOWN FREELY WHILE HANGING FROM BALANCER OVERHEAD.
 - WITH POWER TO TOOL TURNED ON, TEST TRIGGER FOR PROPER OPERATION.
 - DEPRESS EACH TRIGGER SEPARATELY. TOOL SHOULD NOT ACTIVATE. DEPRESS BOTH TRIGGERS. TOOL SHOULD ACTIVATE (IF SUPPLIED WITH MULTIPLE TRIGGERS).
 - IF TOOL HAS "ANTI-TIE DOWN" OPTION, BOTH TRIGGERS MUST BE DEPRESSED SIMULTANEOUSLY FOR TOOL TO ACTIVATE.
2. TO PERFORM WORK, HOLD TOOL FIRMLY AT BOTH HANDLES. SQUEEZE TRIGGERS TO ACTIVATE TOOL.
3. POSITION TOOL AND PERFORM CUTTING OPERATION.

MAINTENANCE

⚠ WARNING ONLY TRAINED AND QUALIFIED PERSONNEL ARE TO PERFORM MAINTENANCE AND SERVICE TO THIS TOOL.

THE COMPRESSED AIR DISTRIBUTION SYSTEM MUST BE LARGE ENOUGH TO SUPPLY AN ADEQUATE VOLUME OF CLEAN AND DRY COMPRESSED AIR TO THE TOOL.

1. MAKE ALL NECESSARY LINE CONNECTIONS TO THE TOOL.
2. AN AIR FILTER-REGULATOR-LUBRICATOR (PART NO. 7200030) MUST BE INSTALLED IN AIR SUPPLY FOR EACH TOOL.
3. FILL LUBRICATOR WITH KENTMASTER AIR MIST OIL (PART NO. 7903050). SET DRIP RATE ACCORDING TO INSTRUCTIONS SUPPLIED. TURN ADJUSTMENT ON SIGHT FEED DOME TO INCREASE/DECREASE OIL DELIVERY. MONITOR THE DEVICE BEING LUBRICATED AND READJUST IF NEEDED.
4. TOOL REQUIRES GREASING AT START OF EACH SHIFT. GREASE FOUR (4) LOCATIONS USING KENTMASTER GREASE GUN (PART NO. 4501470) AND GREASE (PART NO. 7903070).
5. TOOL REQUIRES 40 S.C.F.M. OF AIR @ 90 P.S.I. AIR PRESSURE.
6. FLUSH AIR MOTOR AT END OF EACH DAY'S USE BY SQUIRTING A FEW SQUIRTS OF KENTMASTER AIR OIL MIST (PART 7903050) DIRECTLY INTO THE AIR INLET PORT. RUN TOOL A FEW SECONDS TO COAT AND PROTECT THE AIR MOTOR AND INTERNAL PARTS OF TOOL.

BLADE REMOVAL AND CLEANING.

⚠ WARNING ALWAYS DISCONNECT POWER SUPPLY FROM TOOL BEFORE INSTALLING OR REMOVING BLADE FROM TOOL.

⚠ WARNING ALWAYS WEAR WIRE MESH GLOVES WHEN INSTALLING OR REMOVING BLADE FROM TOOL.

1. REMOVE COLLAR (ITEM NO. 1, FIG. NO. 1).
2. REMOVE BLADE (ITEM NO. 2, FIG. NO. 1).
3. CLEAN ALL PARTS REMOVED WITH SOAP AND WATER.
4. SHARPEN OR REPLACE BLADES WHEN NECESSARY.
5. REASSEMBLE IN REVERSE ORDER.

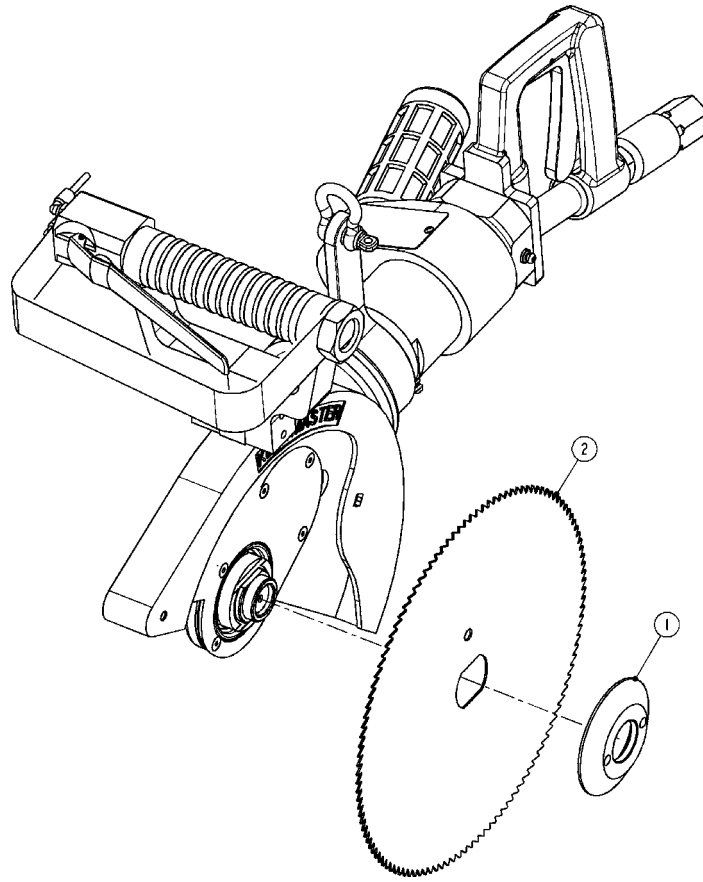
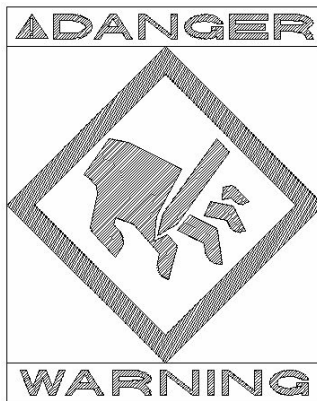


Figure 1 MODEL 77 AND AHB – BLADE REPLACEMENT

SERVICE

1. KEEP GOOD RECORDS OF ALL SERVICE ACTIVITY AND INCLUDE TOOL IN PREVENTIVE MAINTENANCE PROGRAM.
2. USE ONLY GENUINE KENTMASTER REPLACEMENT PARTS TO ASSURE PROPER PERFORMANCE OF TOOL.
3. CONTACT THE KENTMASTER SUPPLIER NEAREST YOU FOR PARTS AND CUSTOMER SERVICE INFORMATION.



PARTS BOOK

KENTMASTER MFG. CO., INC. 1801 SOUTH MOUNTAIN AVE., MONROVIA, CALIFORNIA 91016 UNITED STATES OF AMERICA

☎ TELEPHONE: (626) 359-8888 FAX: (626) 303-5151

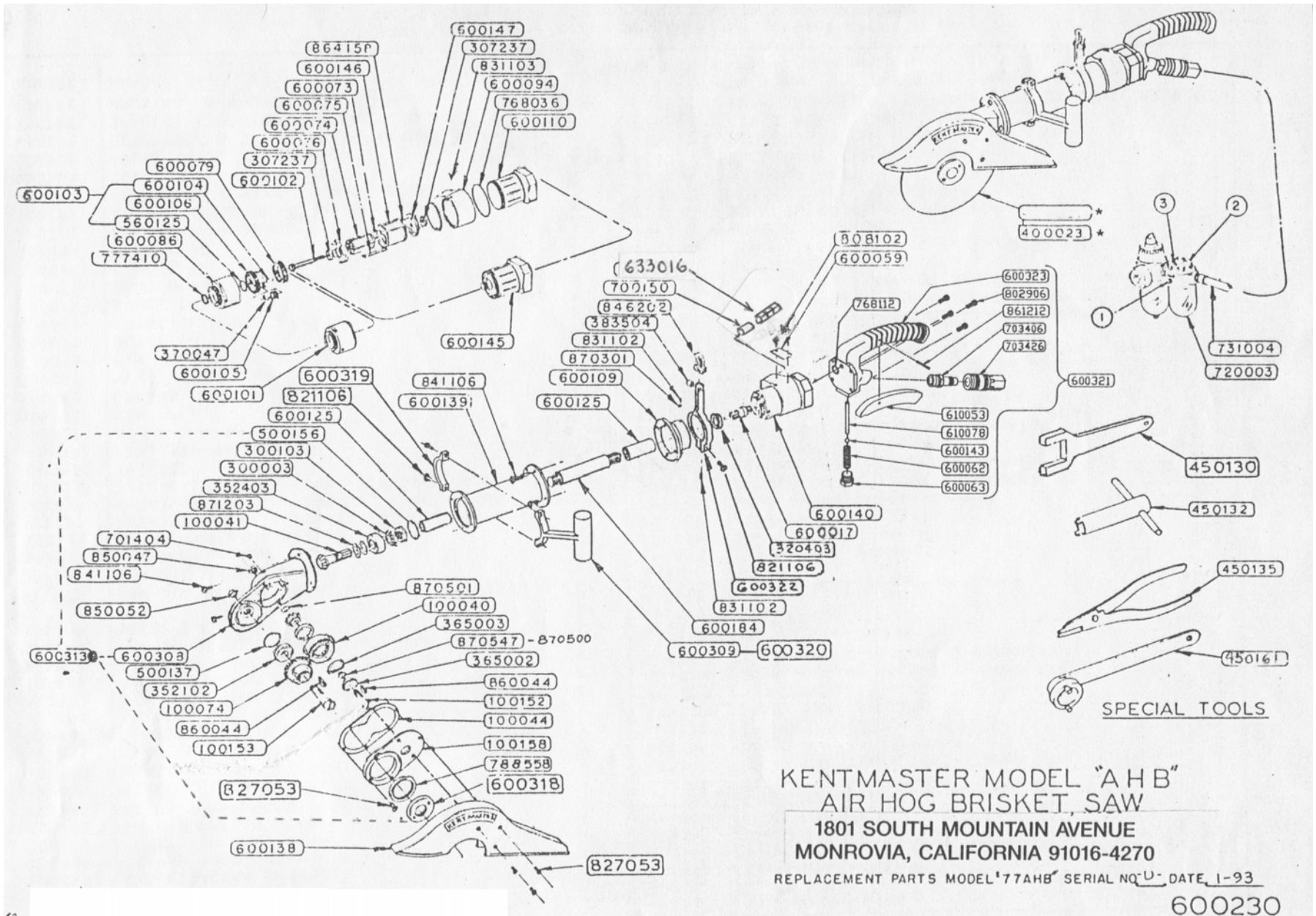


Figure 2 MODEL "AHB" – MAIN ASSEMBLY

KENTMASTER MFG. CO., INC. 1801 SOUTH MOUNTAIN AVE., MONROVIA, CALIFORNIA 91016 UNITED STATES OF AMERICA

☎ TELEPHONE: (626) 359-8888 FAX: (626) 303-5151

REV D: 08/01/11

SERIAL NO. <u>D</u> - DATE. <u>1-93</u>		PARTS LIST		600230	
PART NO.	DESCRIPTION	REQ'D	PART NO.	DESCRIPTION	REQ'D
100040	BEVEL SPUR GEAR	1	600125	SPLINE COUPLING	2
100041	PINION, DRIVE GEAR	1	600138	BLADE GUARD, HOG BRISKET, 8" DIA. BLADE	1
100044	GASKET, GEAR NOSE	1	600139	EXTENSION HOUSING	1
100074	DRIVEN SPUR GEAR	1	600140	AIRMOTOR & GEAR CASE ASSEMBLY	1
100152	SHAFT, IDLER GEAR	1	600143	BALL, AIR VALVE SEAL	1
100153	SHAFT, DRIVEN GEAR	1	600323	REAR HANDLE	1
100158	COVER, GEAR NOSE	1	600145	AIRMOTOR ASSEMBLY	1
300003	BEARING LOCKWASHER, PINION	1	600146	CYLINDER, RIGHT HAND	1
300103	BEARING LOCKNUT, PINION	1	600147	UPPER END PLATE, RIGHT HAND	1
307237	BEARING, AIRMOTOR	2	600184	DRIVE SHAFT EXTENSION	1
320403	BEARING, DRIVE SHAFT	1	600209	SPANNER WRENCH, SAW BLADE	1
352102	BEARING, DRIVEN SPUR GEAR	1	600308	NOSE, GEAR HOUSING	1
352403	BEARING, PINION GEAR	1	600309	TEE HANDLE	1
365002	TAPER BEARING CONE	2	600313	GEAR HOUSING ASSEMBLY, COMPLETE	1
365003	TAPER BEARING CUP	2	600321	REAR HANDLE ASSEMBLY, COMPLETE	1
370047	NEEDLE BR'G, IDLER GEAR, HIGH SPEED	3	600318	SAW COLLAR, BLADE	1
383504	STEEL BUSHING	1	600319	CLAMP HANDLE	1
400023	SAW BLADE, THIN RIM, 8" DIA. 150 TEETH	1	600320	HANDLE ASSEMBLY	1
450130	WRENCH, AIRMOTOR GEAR CASE	1	870500	SHIM WASHER, TAPER BEARING SPACER	AS REQ'D
450132	LOCKNUT WRENCH	1	833016	MUFFLER	1
450135	RETAINING RING PLIERS	1	700036	ELBOW, AIR EXHAUST	1
500137	RETAINING RING, BEARING, DRIVEN GEAR	1	700150	NIPPLE, AIR EXHAUST	1
500156	RETAINING RING, BEARING, PINION GEAR	1	701404	LUBRICATION FITTING	1
560125	SPIR-O-LOC RET. RING, AIRMOTOR CAGE	1	703406	MALE PLUG, QUICK CONNECT	1
600058	TRIGGER	1	703426	FEMALE SOCKET, QUICK CONNECT	1
600078	PIN, AIR VALVE	1	720003	REGULATOR/FILTER/LUBRICATOR	1
600017	DRIVE SHAFT	1	731004	AIR HOSE ASSEMBLY	1
600059	NAME PLATE	1	768036	"O" RING, DEFLECTOR, AIRMOTOR	2
600062	SPRING, AIR VALVE	1	768112	"O" RING, REAR HANDLE	1
600063	PLUG, AIR VALVE	1	777410	OIL SEAL, GEAR CASE	1
600073	PIN, LOWER END PLATE	1	788558	OIL SEAL, GEAR NOSE COVER	1
600074	ROTOR	1	802906	SCREW, REAR HANDLE	4
600075	ROTOR BLADES	5	808102	SCREW, NAME PLATE	2
600076	LOWER END PLATE	1	821106	SCREW, FORWARD HANDLE & HANGER RING	3
600079	RING GEAR	1	823804	SCREW, NOSE COVER & BLADE GUARD	6
600086	GEAR CASE	1	831102	SET SCREW, AIRMOTOR SPACER LOCK & HANDLE	2
600094	DEFLECTOR	1	831103	SET SCREW, DEFLECTOR	1
600101	GEAR CASE ASSEMBLY, HIGH SPEED	1	841106	SCREW, GEAR NOSE & EXTENSION HOUSING	8
600102	LONG SPINDLE GEAR, HIGH SPEED	1	846202	HANGER SSHACKLE	1
600103	GEAR CASE ASSEMBLY, HIGH SPEED	1	850047	NUT, IDLER GEAR SHAFT LOCK	1
600104	IDLER PIN, HIGH SPEED	3	850052	NUT, DRIVEN GEAR SHAFT LOCK	1
600105	IDLER GEAR, HIGH SPEED	3	860044	WOODRUFF KEY	2
600106	GEAR CAGE & SPLINE RING ASSEMBLY	1	861212	ROLL PIN, TRIGGER	1
600109	SPACER, AIRMOTOR TO GEAR HOUSING	1	864158	PIN, UPPER END PLATE	1
600110	HOUSING, AIRMOTOR	1	870301	BRASS PLUG, SPACER LOCK	1
600322	HANGER RING	1	870501	SHIM WASHER, IDLER SPUR GEAR BEARING	AS REQ.
			870547	SHIM WASHER, TAPER BEARING SPACER	1
			871203	SPRING WASHER, PINION GEAR BEARING	4

* SAW BLADES AVAILABLE UPON REQUEST. SPECIFY PART NUMBER, DIAMETER AND NUMBER OF TEETH WHEN ORDERING

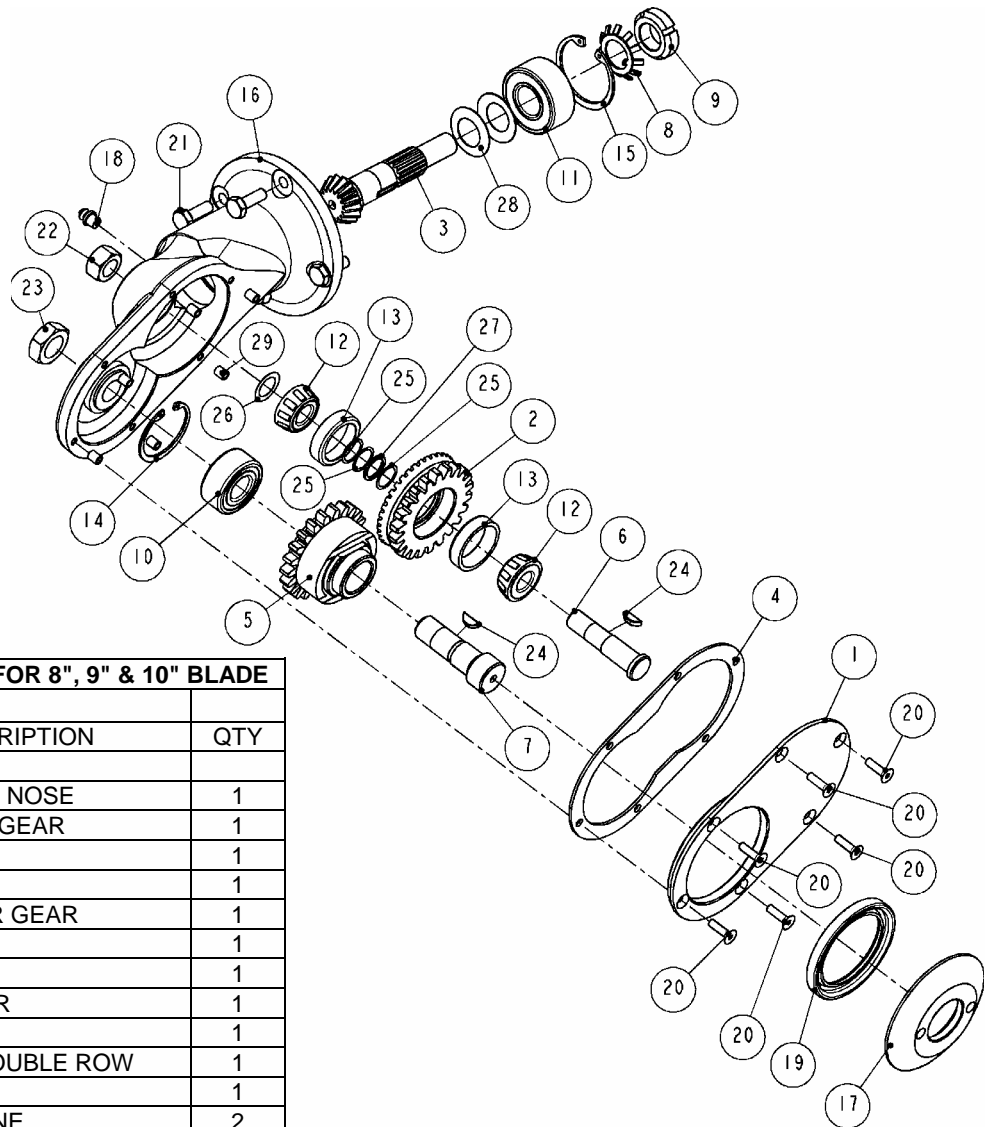
1-86
7-86
7-91

Figure 3 BOM FOR MODEL "AHB"

KENTMASTER MFG. CO., INC. 1801 SOUTH MOUNTAIN AVE., MONROVIA, CALIFORNIA 91016 UNITED STATES OF AMERICA

① TELEPHONE: (626) 359-8888 FAX: (626) 303-5151

REV D: 08/01/11



6003131: GEAR-NOSE ASSEMBLY FOR 8", 9" & 10" BLADE			
ITEM	PART #	DESCRIPTION	QTY
1	1000360	COVER GEAR NOSE	1
2	1000400	BEVEL/SPUR GEAR	1
3	1000410	PINION	1
4	1000440	GASKET	1
5	1000740	DRIVEN SPUR GEAR	1
6	1001520	SHAFT	1
7	1001530	SHAFT	1
8	3000030	LOCKWASHER	1
9	3001030	LOCKNUT	1
10	3521020	BEARING - DOUBLE ROW	1
11	3524030	BEARING	1
12	3650020	BEARING CONE	2
13	3650030	BEARING CUP	2
14	5001370	RETAINING RING	1
15	5001560	RETAINING RING	1
16	6003080	GEAR NOSE HOUSING	1
17	6003180	NUT - BLADE	1
18	7017110	GREASE FITTING	1
19	7885580	SEAL	1
20	8270530	SCREW	6
21	8411060	SCREW	4
22	8500470	NUT	1
23	8500520	NUT	1
24	8600440	KEY	2
25	8705000	WASHER	3
26	8705010	WASHER	1
27	8705470	WASHER	1
28	8712030	SPRING WASHER	2
29	8803080	INSERT	6

Figure 4 GEAR-NOSE ASSEMBLY FOR 8", 9" & 10" BLADE

GEAR HOUSING DISASSEMBLY

1. REMOVE (2) NUTS, ITEMS 22 & 23 (FIGURE 4).
2. FROM REAR OF NOSE, ITEM 16, PRESS OUT SHAFT, ITEM 7, FIRST.
3. FROM REAR OF NOSE, ITEM 16, PRESS OUT SHAFT, ITEM 6, NEXT.
4. REMOVE RETAINING RING, ITEM 15.
5. FROM FRONT FACE OF NOSE, ITEM 16, PRESS OUT PINION, ITEM 3.
6. FOLD BACK LOCKWASHER TAB, ITEM 8, OUT OF LOCKNUT SLOT, ITEM 9.
7. USING LOCKNUT WRENCH (OPTIONAL), ITEM 27 (FIGURE 2), REMOVE LOCKNUT, ITEM 9 (FIGURE 4).

GEAR HOUSING REASSEMBLY

1. CLEAN AND LUBRICATE ALL PARTS PRIOR TO REASSEMBLY.
2. REASSEMBLE PARTS IN REVERSE ORDER.
3. BE SURE TO REASSEMBLE (4) SPRING WASHER, ITEM 28 (FIGURE 4), ONTO PINION, ITEM 3, IN CORRECT ORIENTATION

6001400: AIR MOTOR AND GEAR CASE ASSEMBLY			
ITEM	PART #	DESCRIPTION	QTY
1	6000940	DEFLECTOR	1
2	6001010	GEAR CASE ASSEMBLY	1
3	6001450	AIR MOTOR ASSEMBLY	1
4	7680360	O-RING	2
5	8311030	SET SCREW	1

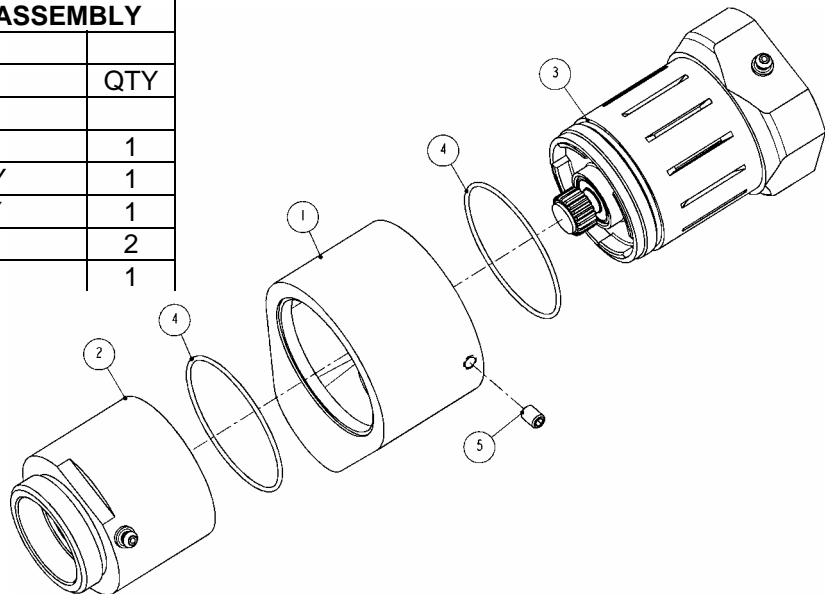
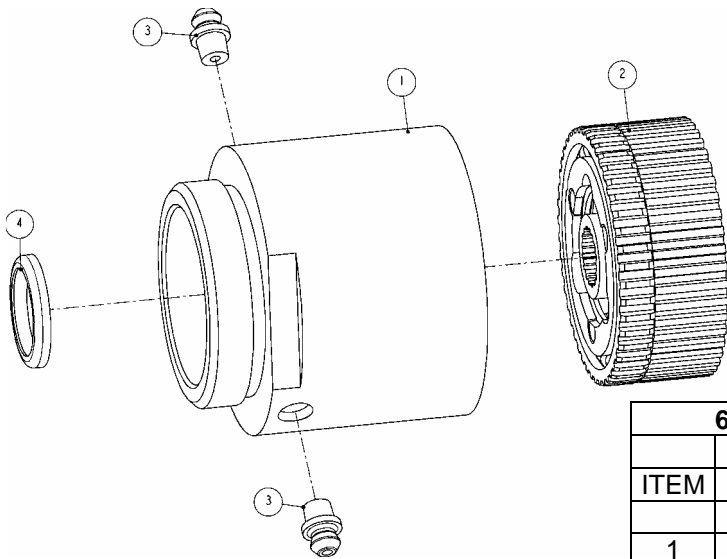
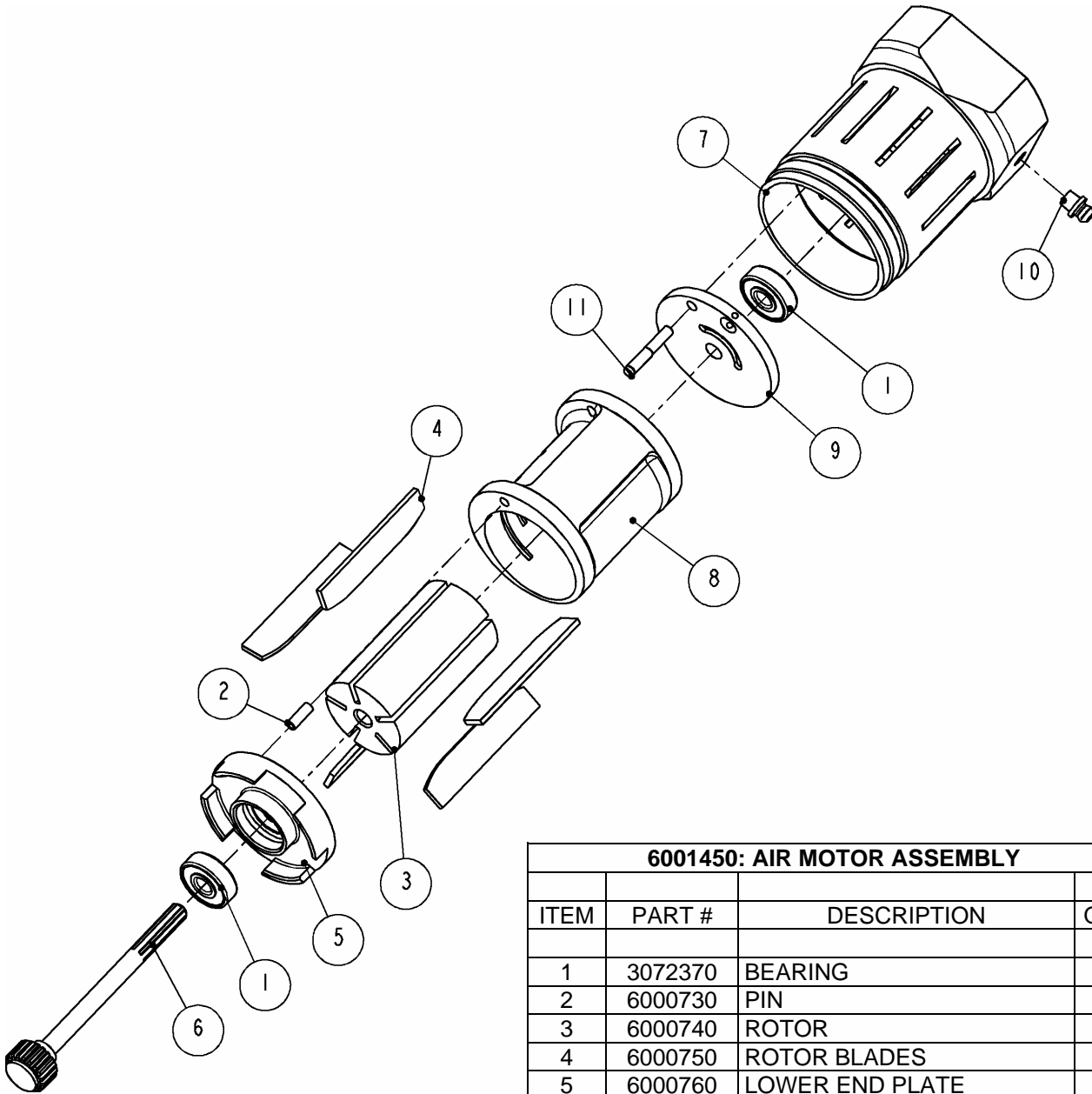


Figure 5 AIR MOTOR AND GEAR CASE ASSEMBLY



6001010: GEAR CASE ASSEMBLY			
ITEM	PART #	DESCRIPTION	QTY
1	6000860	GEAR CASE	1
2	6001030	GEAR CAGE	1
3	7017110	GREASE FITTING	2
4	7774100	SEAL	1

Figure 6 GEAR CASE ASSEMBLY

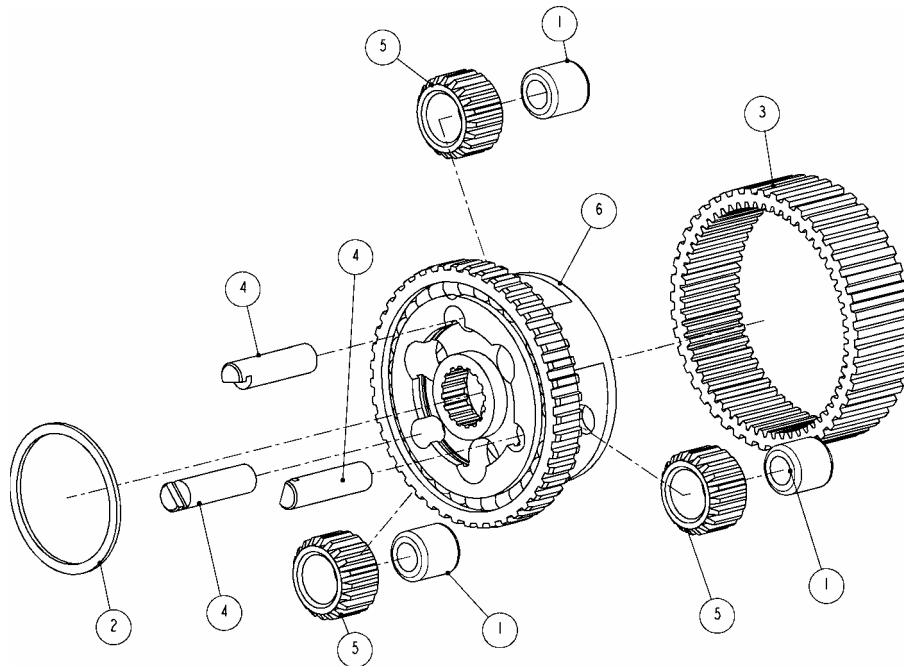


6001450: AIR MOTOR ASSEMBLY			
ITEM	PART #	DESCRIPTION	QTY
1	3072370	BEARING	2
2	6000730	PIN	1
3	6000740	ROTOR	1
4	6000750	ROTOR BLADES	5
5	6000760	LOWER END PLATE	1
6	6001020	LONG GEAR SPINDLE	1
7	6001100	HOUSING, AIR MOTOR	1
8	6001460	CYLINDER	1
9	6001470	UPPER END PLATE	1
10	7017110	GREASE FITTING	1
11	8641580	GROOVED PIN	1

Figure 7 AIR MOTOR ASSEMBLY

KENTMASTER MFG. CO., INC. 1801 SOUTH MOUNTAIN AVE., MONROVIA, CALIFORNIA 91016 UNITED STATES OF AMERICA
 ☎ TELEPHONE: (626) 359-8888 FAX: (626) 303-5151

REV D: 08/01/11



6001030: GEAR CAGE ASSEMBLY			
ITEM	PART #	DESCRIPTION	QTY
1	3700470	NEEDLE BEARING	3
2	5601250	RETAINING RING	1
3	6000790	RING GEAR	1
4	6001040	PIN	3
5	6001050	IDLER GEAR	3
6	6001060	GEAR CAGE AND SPLINE RING ASSEMBLY	1

Figure 8 GEAR CAGE ASSEMBLY

GEAR CASE AND AIRMOTOR DISASSEMBLY

1. LOOSEN SET SCREW, ITEM 5 (FIGURE 5).
2. USING WRENCH (OPTIONAL), ITEM 4501300, REMOVE CASE, ITEM 2 (FIGURE 5).
3. TO DISASSEMBLE GEAR CAGE ASSEMBLY:
 - REMOVE RETAINING RING, ITEM 2 (FIGURE 8).
 - PRESS OUT PINS (3) AND BEARINGS (3), ITEMS 4 AND 1 (FIGURE 8).
4. SLIDE DEFLECTOR, ITEM 1 (FIGURE 5), OFF HOUSING, ITEM 3 (FIGURE 5).
5. SLIDE AIR MOTOR OUT OF HOUSING, ITEM 7 (FIGURE 7).
6. PULL GEAR, ITEM 6 (FIGURE 7), OUT OF AIR MOTOR.
7. PULL PLATES, ITEMS 5 AND 9 (FIGURE 7), OFF CYLINDER, ITEM 8 (FIGURE 7).

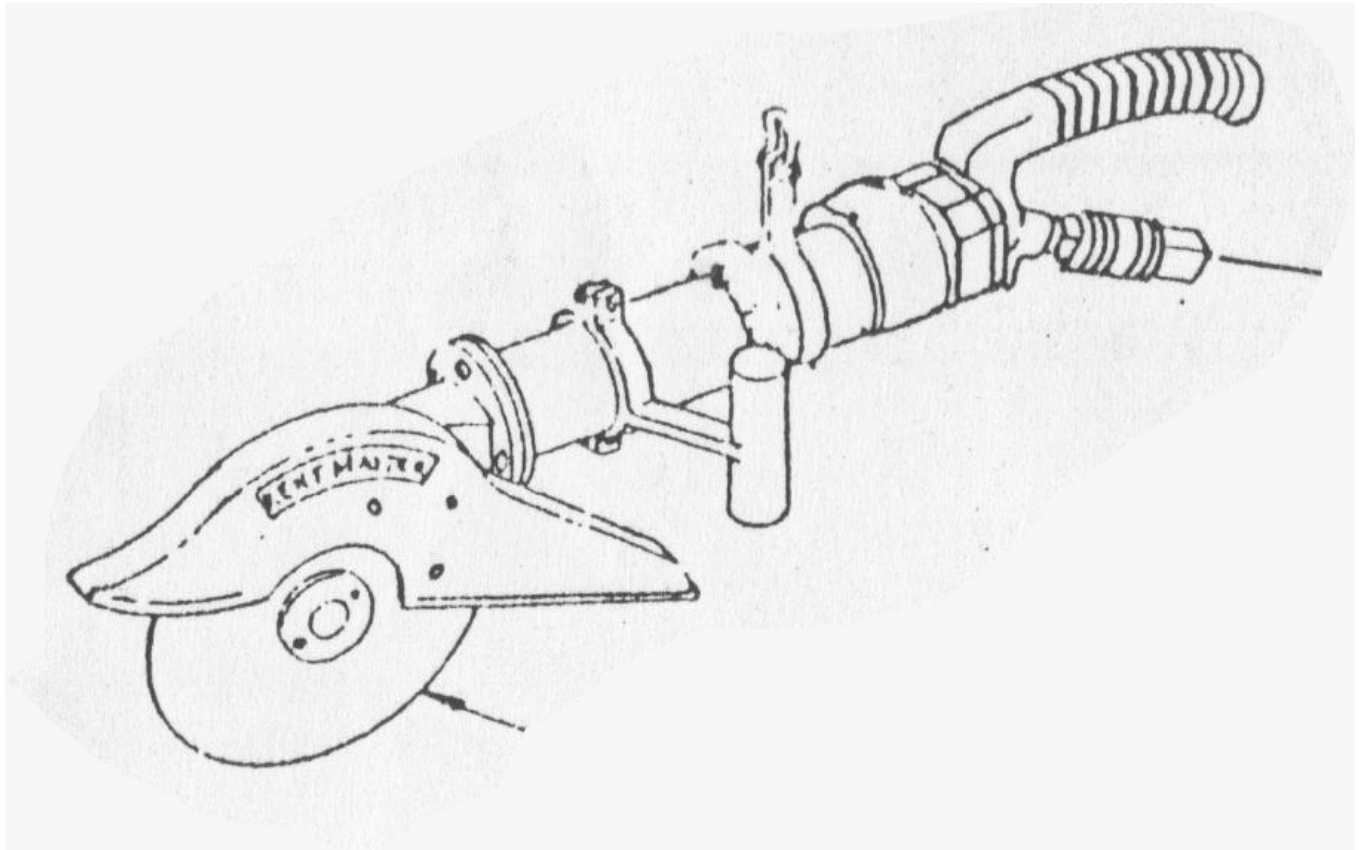
GEAR CASE AND AIRMOTOR REASSEMBLY

1. CLEAN AND LUBRICATE ALL PARTS PRIOR TO REASSEMBLY.
2. REASSEMBLE ALL PARTS IN REVERSE ORDER.
3. HAND TIGHTEN CASE, ITEM 2 (FIGURE 5), ONTO HOUSING, ITEM 3 (FIGURE 5).
4. ATTACH AIR TO TOOL. WITH TOOL ACTIVATED, TIGHTEN WITH A WRENCH, CASE ONTO HOUSING. THIS HELPS MAINTAIN THE ALIGNMENT OF AIRMOTOR TO GEAR CASE ASSEMBLY. DISCONNECT AIR SUPPLY.

KENTMASTER MFG. CO., INC. 1801 SOUTH MOUNTAIN AVE., MONROVIA, CALIFORNIA 91016 UNITED STATES OF AMERICA
 ☎ TELEPHONE: (626) 359-8888 FAX: (626) 303-5151

[ENGLISH]

GENERAL INFORMATION



MODELS

“AHB” AIR HOG BRISKET SAW

SERVICE CENTERS

KENTMASTER LTD. (U.K)
16 AVONBANK INDUSTRIAL CENTRE
WEST TOWN ROAD
AVONMOUTH - BRISTOL BS11 9DE
UNITED KINGDOM

☎ TELEPHONE: ++ 44- (0) 117- 9235035
FAX: ++ 44- (0) 117- 9829010

KENTMASTER MFG. CO., INC.
1801 SOUTH MOUNTAIN AVE.
MONROVIA, CALIFORNIA 91016
UNITED STATES OF AMERICA

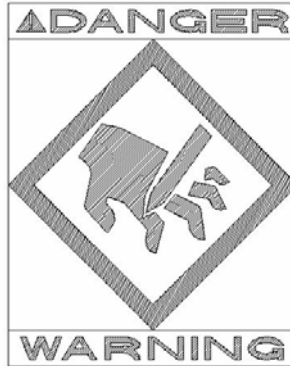
☎ TELEPHONE: (626) 359-8888
FAX: (626) 303-5151

KENTMASTER MFG. CO., INC. 1801 SOUTH MOUNTAIN AVE., MONROVIA, CALIFORNIA 91016 UNITED STATES OF AMERICA

☎ TELEPHONE: (626) 359-8888 FAX: (626) 303-5151

NOTICE TO EMPLOYER AND PURCHASER OF TOOL
NOTICE TO SAFETY DIRECTOR

You have purchased a powerful tool that, if misused, can cause severe injury and harm to your employees. You must instruct your employees in the safe and proper use of this tool and to follow the safety procedures and instructions that have been supplied by the manufacturer of this tool. Please follow the following instructions.



1. Instruct tool operators to test the tool each day before using it to be sure it does not malfunction. Remove and repair any tool that malfunctions.
2. Instruct tool operators to immediately stop using a tool that malfunctions or is defective.
3. Instruct personnel to immediately remove all tools that malfunction. Be sure to disconnect tool from power supply.
4. Instruct all personnel to stay clear of tool, and not to stand or walk in front of, or next to tool when in use.
5. Point out to all personnel the dangers related to the misuse of tool and the importance of following safety procedures and instructions.
6. Do not make, or allow others to make, alterations or modifications to this tool. Replace all lost or illegible labels.
7. Follow all safety, installation and maintenance instructions provided with this tool. Establish proper safety procedures in accordance with local and national requirements to prevent accidental energizing of tool that can cause injuries.
8. If this tool is sold or change in ownership takes place, you must provide the new owner all safety instructions, notices and maintenance instructions you were originally provided. You can obtain additional copies of the instructions from Kentmaster, free of charge upon request.
9. Give copies of instructions to: **(A) Tool Operators**
(B) Maintenance Supervisor
(C) Clean-up Supervisor

GENERAL INFORMATION

COVERING: SAFETY PRECAUTIONS AND PLACING INTO SERVICE

AIR POWERED HOG BRISKET SAW

READ THIS MANUAL CAREFULLY BEFORE INSTALLING, OPERATING OR SERVICING THIS TOOL

IT IS THE RESPONSIBILITY OF THE EMPLOYER TO PLACE THIS INFORMATION INTO THE HANDS OF THE OPERATOR.

PLACING INTO SERVICE

WARNING

CAUTION

= Hazards or unsafe practices which could result in severe personal injury, death or substantial property damage.

NOTICE

= Hazards or unsafe practices which could result in minor personal injury, product or property damage.

= Important installation, operation or maintenance information.

WARNING

Installation, adjustment repair and maintenance of this tool must be made by trained and qualified personnel.

WARNING

Always disconnect power supply from tool before:

- (A) Installing or removing blade from tool.
- (B) Making repairs or adjustments to the tool.
- (C) performing maintenance or cleanup work.

INSTALLATION INSTRUCTIONS

WARNING

MAINTENANCE

ONLY TRAINED AND QUALIFIED PERSONNEL ARE TO PERFORM MAINTENANCE AND SERVICE TO THIS TOOL.

THE COMPRESSED AIR DISTRIBUTION SYSTEM MUST BE LARGE ENOUGH TO SUPPLY AN ADEQUATE VOLUME OF CLEAN AND DRY COMPRESSED AIR TO THE TOOL.

1. MAKE ALL NECESSARY LINE CONNECTIONS TO THE TOOL.
2. AN AIR FILTER-REGULATOR-LUBRICATOR (PART NO. 7200030) MUST BE INSTALLED IN AIR SUPPLY FOR EACH TOOL.
3. FILL LUBRICATOR WITH KENTMASTER AIR MIST OIL (PART NO. 7903050). SET DRIP RATE ACCORDING TO INSTRUCTIONS SUPPLIED. TURN ADJUSTMENT ON SIGHT FEED DOME TO INCREASE/DECREASE OIL DELIVERY. MONITOR THE DEVICE BEING LUBRICATED AND READJUST IF NEEDED.
4. TOOL REQUIRES GREASING AT START OF EACH SHIFT. GREASE FOUR (4) LOCATIONS USING KENTMASTER GREASE GUN (PART NO. 4501470) AND GREASE (PART NO. 7903070).
5. TOOL REQUIRES 40 S.C.F.M. OF AIR @ 90 P.S.I. AIR PRESSURE.

KENTMASTER MFG. CO., INC. 1801 SOUTH MOUNTAIN AVE., MONROVIA, CALIFORNIA 91016 UNITED STATES OF AMERICA

☎ **TELEPHONE:** (818) 359-8888 **FAX:** (818) 303-5151

6. FLUSH AIR MOTOR AT END OF EACH DAY'S USE BY SQUIRTING A FEW SQUIRTS OF KENTMASTER AIR OIL MIST (PART 7903050) DIRECTLY INTO THE AIR INLET PORT. RUN TOOL A FEW SECONDS TO COAT AND PROTECT THE AIR MOTOR AND INTERNAL PARTS OF TOOL
7. A BALANCER IS REQUIRED FOR OPERATION AND USE OF THIS TOOL. WEIGHT OF TOOL MUST FALL WITHIN WEIGHT RANGE OF BALANCER.
8. INSTALL BALANCER ABOVE WORK AREA. BALANCER MUST HAVE SUFFICIENT VERTICAL TRAVEL SO OPERATOR CAN REACH ENTIRE WORK AREA WITH TOOL WITHOUT STRAIN.
9. ADJUST BALANCER ACCORDING TO THE OPERATOR'S PREFERENCE AND COMFORT.

⚠ WARNING

WE STRONGLY SUGGEST THAT AN ADDITIONAL SAFETY CHAIN BE USED TO CHAIN BALANCER TO OVERHEAD TROLLEY. THIS ADDITIONAL MEASURE OF SAFETY WILL HELP REDUCE INJURIES.

⚠ WARNING

OPERATING INSTRUCTIONS

ONLY TRAINED PERSONNEL ARE TO OPERATE THIS TOOL.

1. HOLD TOOL FIRMLY AT BOTH TRIGGER HANDLES. SQUEEZE TRIGGERS SIMULTANEOUSLY TO ACTIVATE TOOL.
2. DO NOT EXERT EXCESSIVE PRESSURE. ALLOW TIME FOR THE TOOL TO CUT.

⚠ WARNING

MAINTENANCE

ONLY TRAINED AND QUALIFIED PERSONNEL ARE TO PERFORM MAINTENANCE AND SERVICE TO THIS TOOL.

1. FOLLOW PROCEDURES NO. 3 TO 6 OF INSTALLATION INSTRUCTIONS.

⚠ WARNING

BLADE REMOVAL AND CLEANING.

⚠ WARNING ALWAYS DISCONNECT POWER SUPPLY FROM TOOL BEFORE INSTALLING OR REMOVING BLADE FROM TOOL.

ALWAYS WEAR WIRE MESH GLOVES WHEN INSTALLING OR REMOVING BLADES FROM TOOL.

1. REMOVE COLLAR (ITEM NO. 1, FIG. NO. 1).
2. REMOVE BLADE (ITEM NO. 2, FIG. NO. 1).
3. CLEAN ALL PARTS REMOVED WITH SOAP AND WATER.
4. SHARPEN OR REPLACE BLADES WHEN NECESSARY.
5. REASSEMBLE IN REVERSE ORDER.

SERVICE

1. KEEP GOOD RECORDS OF ALL SERVICE ACTIVITY AND INCLUDE TOOL IN YOUR PREVENTIVE MAINTENANCE PROGRAM.
2. USE ONLY GENUINE KENTMASTER REPLACEMENT PARTS TO ASSURE PROPER PERFORMANCE OF TOOL.
3. CONTACT THE KENTMASTER SUPPLIER NEAREST YOU FOR PARTS AND CUSTOMER SERVICE INFORMATION.

DECLARATION OF CONFORMITY

DECLARATION OF CONFORMITY

DECLARATION DE CONFORMITE -DECLARACION DE CONFORMIDAD- ERKLARUNG BEZUGLICH EINHALTUNG DER VORSCHRIFTEN
DICHIARAZIONE DI CONFORMITA . CONFORMITEITSVERKLARING

MANUFACTURED BY:

FABRIQUE PAR:
FABRICADA POR:
HERGESTELLTVON:
FABBRICATO DA:
VERVAARDIGD DOOR:

KENTMASTER MFG CO., INC.

1801 SOUTH MOUNTAIN AVE.
MONROVIA, CALIFORNIA 91016
UNITED STATES OF AMERICA
TELEPHONE (626) 359-8888 FAX (626) 303-5151

TYPE / SERIES: AIR HOG BRISKET SAW

TYPE / SERIE:
TIPO / SERIE:
TYP / SERIE:
TIPO / SERIE:
TYPE / SERIE:

MODEL: AHB

MODELE:
MODELO:
MODELL:
MODELLO:
MODEL:

SERIAL NO. RANGE: XXXXX

N SERIE: • GAMA DE No. DE SERIE: • SERIEN-NR.-BEREICH: • NUMERI DI SERIE: • SERIENUMMERS:

This product complies with the following European Community Directives:

Ce produit est conforme aux directives de la Communauté européenne suivantes:
Este producto cumple con las siguientes Directrices de la Comunidad Europea:
Dieses Produkt erfüllt die folgenden Vorschriften der Europäischen Gemeinschaft:
Questo prodotto è conforme alle seguenti direttive CEE:
Dit produkt voldoet aan de volgende EG-richtlijnen:

2006/42 EC

The following Standards were used to verify compliance with the Directives:

Les normes suivantes ont été utilisées pour vérifier la conformité avec les Directives:
Las siguientes Normas se usaron para verificar el cumplimiento de las Directrices:
Folgende Normen wurden angewandt, um Erfüllung der Vorschriften zu bestätigen:
Per verificare la conformità del prodotto alle direttive sono stati usati i seguenti standard:
De volgende normen zijn gebruikt om naleving van de richtlijnen te bevestigen:

EN 12984, EN 983

Approved by: _____

RALPH KARUBIAN MONROVIA, CA. U.S.A

(Engineering Manager) (Directeur technique) (gerente de ingenieria) (verantwortlicher Konstruktionsleiter) (Responsabile tecnico) (ondersteunend technisch manager)

Date: AUG - 1 - 2011

Kentmaster Worldwide Location

Kentmaster Equipment (Aust) PTY.LTD.
Unit 2,24 Central Court
Browns Plains Qld. 4118
Australia

Telephone: (07) 3806-8400
Fax: (07) 3806-7933
Australia@Kentmaster.com

Kentmaster do Brasil, Ltda.
Av. Dr. Joao Teodoro No. 805
Bairro De Vila Rezende
13405-240 Piracicaba, SP,
Brazil

Telephone #1: (019) 3 413 3113
Telephone #2: (019)983-4973
Fax: (019) 3 413 3113
Brazil@Kentmaster.com

Kentmaster (IRL) LTD.
Benamore, Dublin Road.
Roscrea,
CO, Tipperary,
Ireland

Telephone: (353) 0505-23292
Fax: (353) 0505-23299
Ireland@Kentmaster.com

Kentmaster Equipment (NZ) LTD.
5 Cooper Street
Havelock North
New Zealand

Telephone #1: (64) 6 8777 857
Telephone #2: 0800 KENTMASTER
Fax: (64) 6 8777 858
NewZealand@Kentmaster.com

Kentmaster South Africa (PTY) LTD.
Johannesburg - S. Africa
Unit 54 Sunnyrock Park
Sunrock Close, Germiston
South Africa

Telephone: (27) 11-455-3748
Fax: (27) 11-455-3749
SouthAfrica@Kentmaster.com

Kentmaster (UK) LTD.
Unit 16 Avonbank Ind. Centre
West Town Rd, Avonmouth-Bristol,
BS11 9DE
England

Telephone: (44) 117-923-5035
Fax: (44)-117-932-9010
UK@Kentmaster.com

Kentmaster Mfg. Co., Inc.
1801 South Mountain Ave.
Monrovia, CA, 91016
USA

Telephone #1: (626) 359-8888
Telephone #2: (800) 421-1477
Fax: (626) 303-5151
info@Kentmaster.com

Kentmaster Omaha
4417 South 139th Street
Omaha, NE, 68137
USA

Telephone #1: (402) 896-3355
Telephone #2: (800) 367-3181
Fax: (402) 896-3311
Omaha@Kentmaster.com

INDEX

<i>OPERATING AND SAFETY INSTRUCTIONS</i>	2
OPERATING INSTRUCTIONS	3
MAINTENANCE	3
<i>SERVICE</i>	4
<i>PARTS BOOK</i>	4
GEAR HOUSING DISASSEMBLY	8
GEAR HOUSING REASSEMBLY	8
GEAR CASE AND AIRMOTOR DISASSEMBLY	11
GEAR CASE AND AIRMOTOR REASSEMBLY	11
<i>GENERAL INFORMATION</i>	14
INSTALLATION INSTRUCTIONS	14
MAINTENANCE	14
OPERATING INSTRUCTIONS	15
MAINTENANCE	15
SERVICE	15
<i>DECLARATION OF CONFORMITY</i>	16
<i>Kentmaster Worldwide Location</i>	17
<i>INDEX</i>	18
<i>FIGURES - INDEX</i>	18

FIGURES - INDEX

Figure 1 MODEL 77 AND AHB – BLADE REPLACEMENT	4
Figure 2 MODEL “AHB” – MAIN ASSEMBLY	5
Figure 3 BOM FOR MODEL “AHB”	6
Figure 4 GEAR-NOSE ASSEMBLY FOR 8”, 9” & 10” BLADE.....	7
Figure 5 AIR MOTOR AND GEAR CASE ASSEMBLY	9
Figure 6 GEAR CASE ASSEMBLY.....	9
Figure 7 AIR MOTOR ASSEMBLY	10
Figure 8 GEAR CAGE ASSEMBLY	11