

OPERATOR'S MANUAL

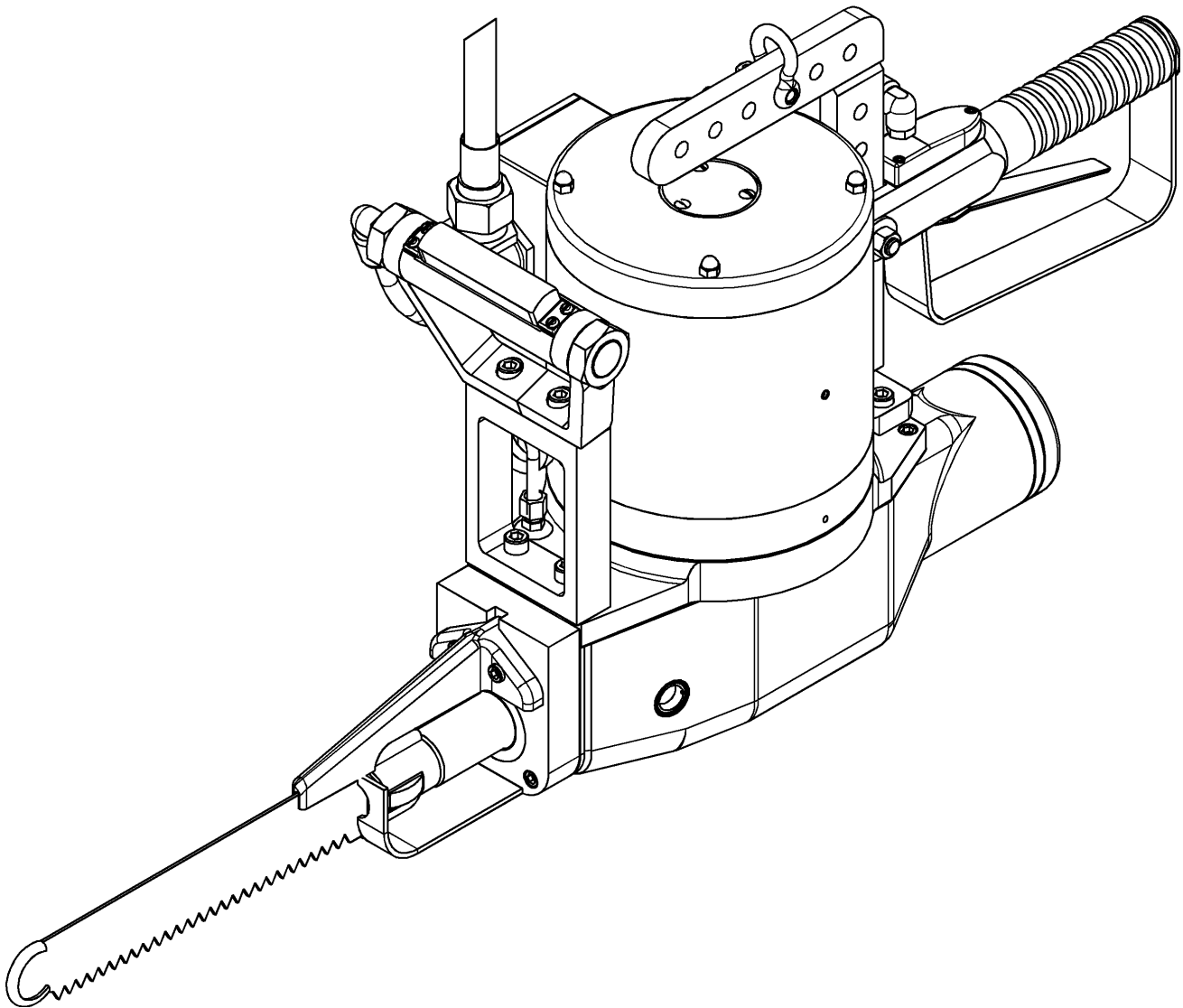
INCLUDING: OPERATION, INSTRUCTION, INSTALLATION, MAINTENANCE AND PARTSBOOK




IMPORTANT: READ THIS MANUAL CAREFULLY BEFORE INSTALLING, OPERATING OR SERVICING THIS TOOL.

ELECTRIC BEEF BRISKET SAW "EBB-II"
















TOOL DATA

MODEL: EBB-II
ASSEMBLY NO.: 1080000
TYPE: ELECTRICAL OPERATED
NET WEIGHT: 85.5 LBS (39 KG)
MOTOR HORSEPOWER: 2HP / 50Hz, 60Hz



 WARNING	= Hazards or unsafe practices which could result in severe personal injury, death or substantial property damage.
 CAUTION	= Hazards or unsafe practices which could result in minor personal injury, product or property damage.
 NOTICE	= Important installation, operation or maintenance information.

OPERATING AND SAFETY INSTRUCTIONS

-  **WARNING** DO NOT OPERATE THIS TOOL UNTIL YOU HAVE READ AND UNDERSTOOD THE SAFETY INSTRUCTIONS AND OPERATING MANUALS.
-  **WARNING** DO NOT OPERATE THIS TOOL UNTIL YOU HAVE RECEIVED TRAINING IN THE HANDLING, OPERATION AND USE OF THIS TOOL.
-  **WARNING** STOP USING A MALFUNCTIONING OR DEFECTIVE TOOL IMMEDIATELY. REPORT ANY PROBLEMS OR DEFECTS TO YOUR SUPERVISOR FOR REMOVAL OF THE TOOL FROM SERVICE.
-  **WARNING** DO NOT ATTEMPT TO REPAIR THE TOOL YOURSELF.
-  **WARNING** DO NOT ALLOW UNAUTHORIZED PERSONS TO USE TOOL.
-  **WARNING** REMOVE AND DISCONNECT POWER FROM THE TOOL WHEN TOOL IS LEFT UNATTENDED OR IS NOT IN USE.
-  **WARNING** NEVER TIE DOWN, BYPASS, ALTER OR MODIFY THE ACTIVATING SWITCHES OR TRIGGERS OF THIS TOOL.
-  **WARNING** NEVER MAKE ALTERATIONS OR MODIFICATIONS TO THIS TOOL.
-  **WARNING** BE CONSTANTLY AWARE AND ALERT FOR UNSAFE CONDITIONS AND REPORT THEM IMMEDIATELY TO YOUR SUPERVISOR.
-  **WARNING** NEVER PLACE YOUR HAND OR ANY PART OF YOUR BODY IN THE CUTTING PATH OF THE TOOL.
-  **WARNING** NEVER ALLOW ANYONE ELSE TO PLACE THEIR HANDS OR ANY PART OF THEIR BODY IN THE CUTTING PATH OF THE TOOL.
-  **WARNING** DO NOT ACTIVATE CONTROL SWITCHES OR TRIGGERS OF THIS TOOL UNLESS YOU INTEND TO TEST OR OPERATE THIS TOOL.
-  **WARNING** DO NOT USE THIS TOOL FOR ANY PURPOSE OTHER THAN IT'S INTENDED PURPOSE.
-  **WARNING** WHEN OPERATING THIS TOOL WEAR THE PROTECTIVE GEAR AND SAFETY EQUIPMENT SUPPLIED TO YOU.
-  **CAUTION** THE NOISE EMISSION (SOUND PRESSURE LEVEL) AT THE WORKSTATION MAY EXCEED 80 dB (A). EAR AND SOUND PROTECTION GEAR IS REQUIRED.
-  **WARNING**

OPERATING INSTRUCTIONS

⚠ WARNING ONLY TRAINED PERSONNEL ARE TO OPERATE THIS TOOL.

1. TO ENSURE TOOL IS OPERATING PROPERLY, PERFORM FOLLOWING STEPS AT START OF EACH SHIFT:
 - MAKE SURE TOOL MOVES UP AND DOWN FREELY WHILE HANGING FROM BALANCER OVERHEAD.
 - WITH POWER TO TOOL TURNED ON, TEST TRIGGER FOR PROPER OPERATION.
 - DEPRESS EACH TRIGGER SEPARATELY. TOOL SHOULD NOT ACTIVATE. DEPRESS BOTH TRIGGERS. TOOL SHOULD ACTIVATE.
 - IF TOOL HAS "ANTI-TIE DOWN" OPTION, BOTH TRIGGERS MUST BE DEPRESSED SIMULTANEOUSLY FOR TOOL TO ACTIVATE.
2. TO PERFORM WORK, HOLD TOOL FIRMLY AT BOTH HANDLES. SQUEEZE TRIGGERS TO ACTIVATE TOOL.
3. POSITION TOOL AND PERFORM CUTTING OPERATION.

BLADE REMOVAL AND CLEANING.

⚠ WARNING ALWAYS DISCONNECT POWER SUPPLY FROM TOOL BEFORE INSTALLING OR REMOVING BLADE FROM TOOL.

⚠ WARNING ALWAYS WEAR WIRE MESH GLOVES WHEN INSTALLING OR REMOVING BLADE FROM TOOL.

1. REMOVE NUT AND BOLT (ITEM NO. 1 AND 2, FIG. NO. 1).
2. REMOVE BLADE (ITEM NO. 3, FIG. NO. 1).
3. CLEAN ALL PARTS REMOVED WITH SOAP AND WATER.
4. SHARPEN OR REPLACE BLADES WHEN NECESSARY.
5. REASSEMBLE IN REVERSE ORDER.

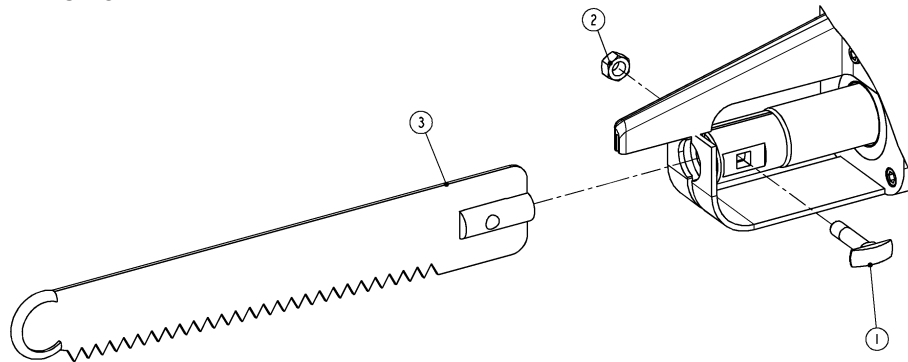
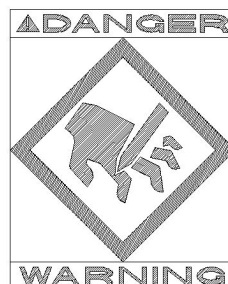


Figure 1 MODEL EBB-II – BLADE REPLACEMENT

SERVICE

1. KEEP GOOD RECORDS OF ALL SERVICE ACTIVITY AND INCLUDE TOOL IN PREVENTIVE MAINTENANCE PROGRAM.
2. USE ONLY GENUINE KENTMASTER REPLACEMENT PARTS TO ASSURE PROPER PERFORMANCE OF TOOL.
3. CONTACT THE KENTMASTER SUPPLIER NEAREST YOU FOR PARTS AND CUSTOMER SERVICE INFORMATION.



PARTS BOOK

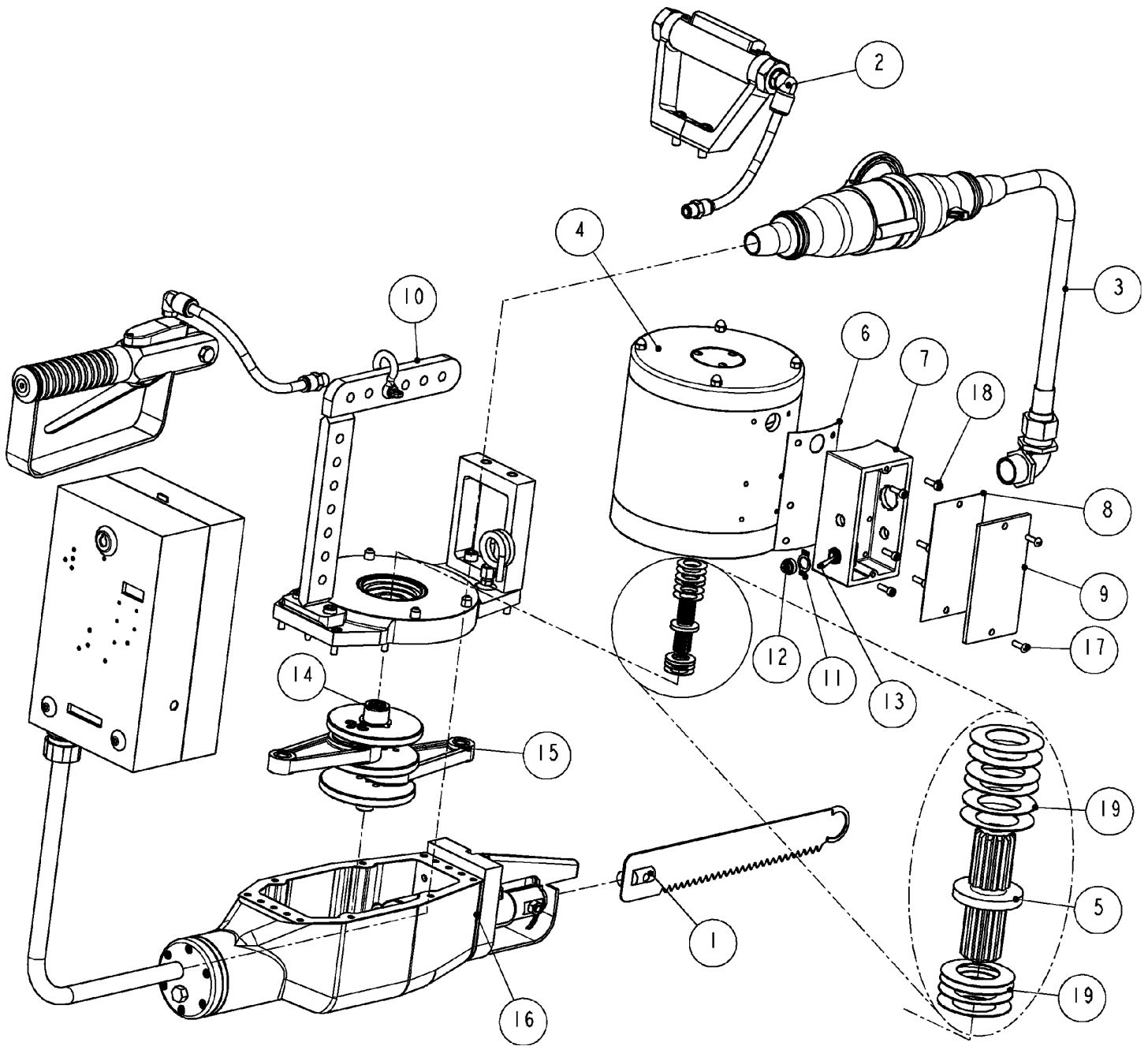


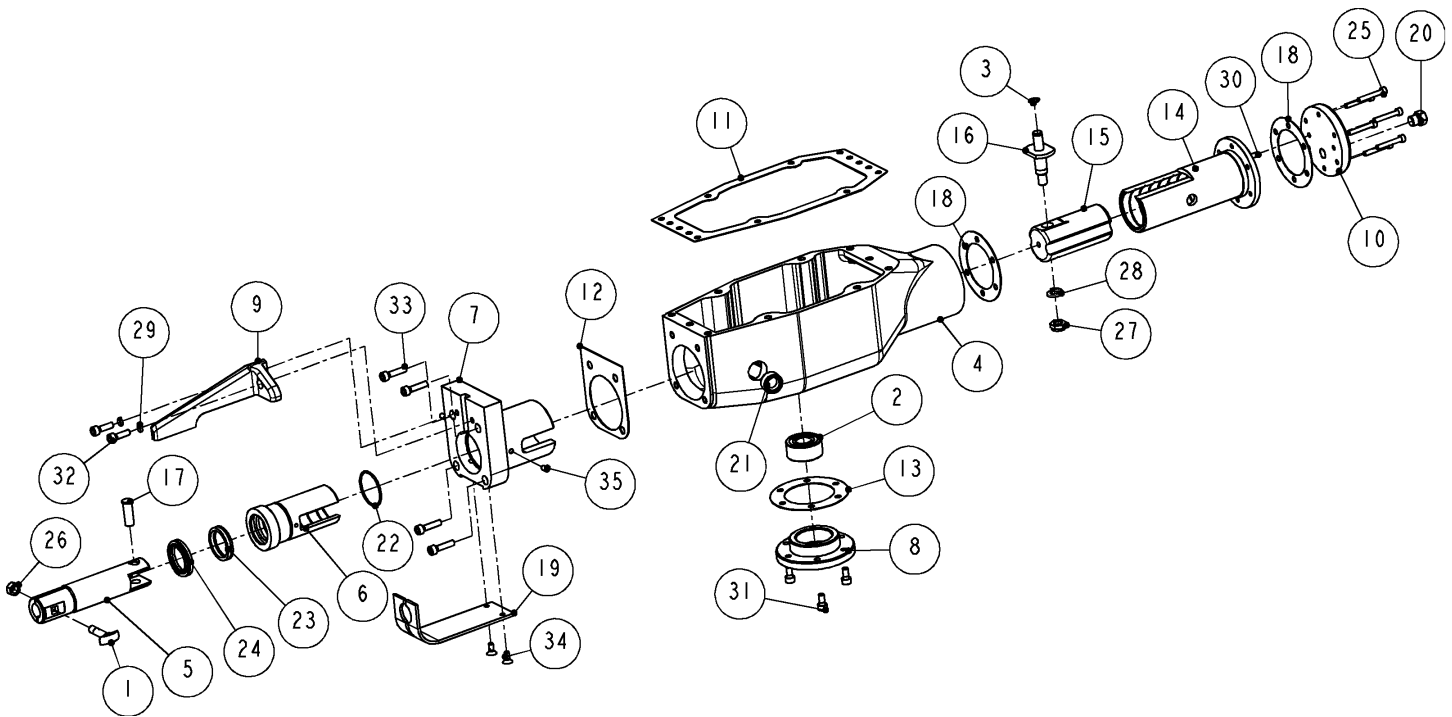
Figure 2 MODEL "EBB-II" – MAIN ASSEMBLY

KENTMASTER MFG. CO., INC. 1801 SOUTH MOUNTAIN AVE., MONROVIA, CALIFORNIA 91016 UNITED STATES OF AMERICA

☎ TELEPHONE: (626) 359-8888 FAX: (626) 303-5151

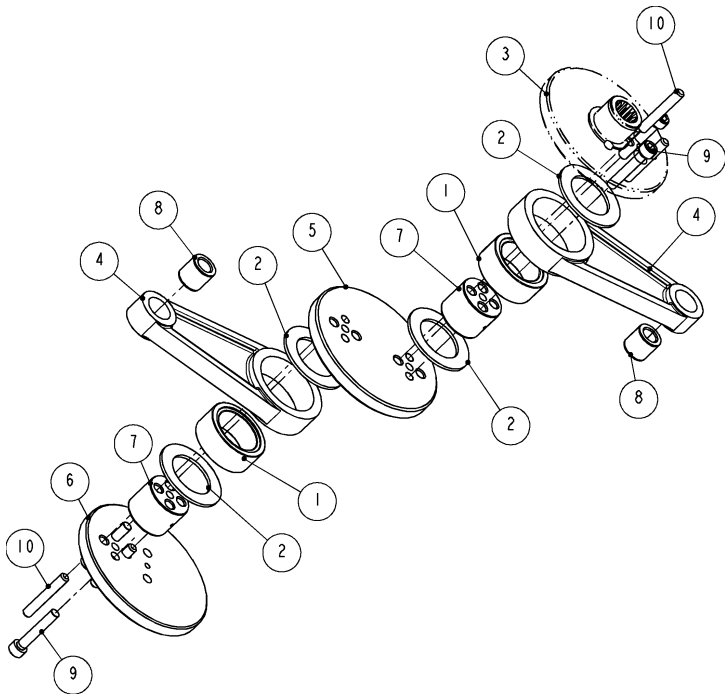
1080000: ELECTRIC BEEF BRISKET SAW			
ITEM	PART #	DESCRIPTION	QTY
BLADES			
1	4100220	SAW BLADE, 12" LONG X 2" WIDE 3 TPI	1
	4100221	SAW BLADE, 10.50" LONG X 1.57" WIDE 3 TPI	1
	4100222	SAW BLADE, 12" LONG X 2" WIDE 4 TPI	1
HANDLE / CONTROL OPTIONS			
2	1080030	ELECTRIC HANDLES WITHOUT ANTI TIE-DOWN	1
	1080031	ELECTRIC HANDLES WITH ANTI TIE-DOWN	1
	1080032	AIR HANDLES WITHOUT ANTI TIE-DOWN	1
	1080033	AIR HANDLES WITH ANTI TIE-DOWN	1
POWER SUPPLY OPTIONS			
3	1080034	POWER SUPPLY, NO ANTI-TIE DOWN	1
	1080035	POWER SUPPLY, ANTI-TIE DOWN	1
	1080036	POWER SUPPLY, 42V, NO ANTI-TIE DOWN	1
	1080037	POWER SUPPLY, 42V, ANTI-TIE DOWN	1
MOTOR OPTIONS			
4	1081330	MOTOR 2HP, 208/416V, 3PH, 60HZ, 6.4/3.2 AMPS	1
	1081340	MOTOR 2HP, 220/380V, 3PH, 60HZ, 6.1/3.5 AMPS	1
	1081330	MOTOR 2HP, 230/460V, 3PH, 60HZ, 5.8/2.9 AMPS	1
	1081350	MOTOR 2HP, 550V, 3PH, 60HZ, 2.3 AMPS	1
	1081300	MOTOR 2HP, 42V, 3PH, 50HZ, 34 AMPS	1
	1081310	MOTOR 2HP, 115/230V, 3PH, 50HZ, 12.4/6.2 AMPS	1
	1081330	MOTOR 2HP, 208/416V, 3PH, 50HZ, 6.9/3.45 AMPS	1
	1081320	MOTOR 2HP, 220/380V, 3PH, 50HZ, 12.9/7.5 AMPS	1
5	1080007	DRIVE BOLT	1
6	1080008	GASKET	1
7	1080009	WIRE BOX	1
8	1080010	GASKET	1
9	1080011	COVER	1
10	1081012	MOTOR ASSEMBLY BASE	1
11	2000130	ON-OFF PLATE	1
12	2000140	BOOT, TOGGLE SWITCH	1
13	2000150	SWITCH	1
14	6330110	FLANGE	1
15	6552010	DRIVE LINK	1
16	6552020	HOUSING ASSEMBLY	1
17	8030050	SCREW	2
18	8210050	SCREW	6
19	8712030	SPRING WASHER (AS REQUIRED)	10

Figure 3 BOM FOR MODEL "EBB-II"



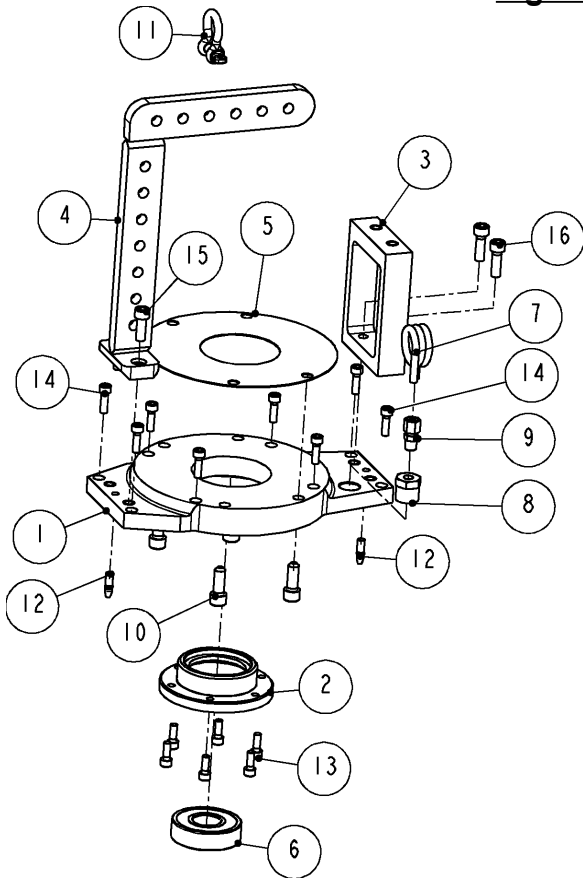
6552020: HOUSING ASSEMBLY							
ITEM	PART #	DESCRIPTION	QTY	ITEM	PART #	DESCRIPTION	QTY
1	1052640	STEP BOLT	1	19	6551400	GUIDE	1
2	3520030	BEARING	1	20	7000210	PLUG	1
3	5100390	RETAINING RING	1	21	7240710	WINDOW	1
4	6551100	HOUSING	1	22	7680290	O-RING	1
5	6551150	SHAFT	1	23	7711140	SEAL	1
6	6551160	BUSHING	1	24	7711150	ROD WIPER	1
7	6551170	BEARING HOUSING	1	25	8210100	SCREW	6
8	6551180	FLANGE	1	26	8500130	NUT	1
9	6551210	GUIDE	1	27	8504870	NUT	1
10	6551220	FLANGE	1	28	8506160	WASHER	1
11	6551230	GASKET	1	29	8506600	WASHER	2
12	6551240	GASKET	1	30	8620250	PIN	1
13	6551250	GASKET	1	31	9211040	SCREW	3
14	6551290	BUSHING	1	32	9211060	SCREW	2
15	6551300	SHAFT	1	33	9211080	SCREW	4
16	6551310	PIN	1	34	9239040	SCREW	2
17	6551320	PIN	1	35	9333000	SET SCREW	2
18	6551330	GASKET	2				

Figure 4 6552020: HOUSING ASSEMBLY



6552010: DRIVE LINK			
ITEM	PART #	DESCRIPTION	QTY
1	3705550	BEARING	2
2	3705590	WASHER	4
3	6330110	FLANGE	-
4	6551110	LINK	2
5	6551120	MIDDLE ECCENTRIC	1
6	6551130	FLANGE	1
7	6551200	JORNAL	2
8	6551440	BEARING	2
9	9211111	SCREW	4
10	9620520	PIN	4

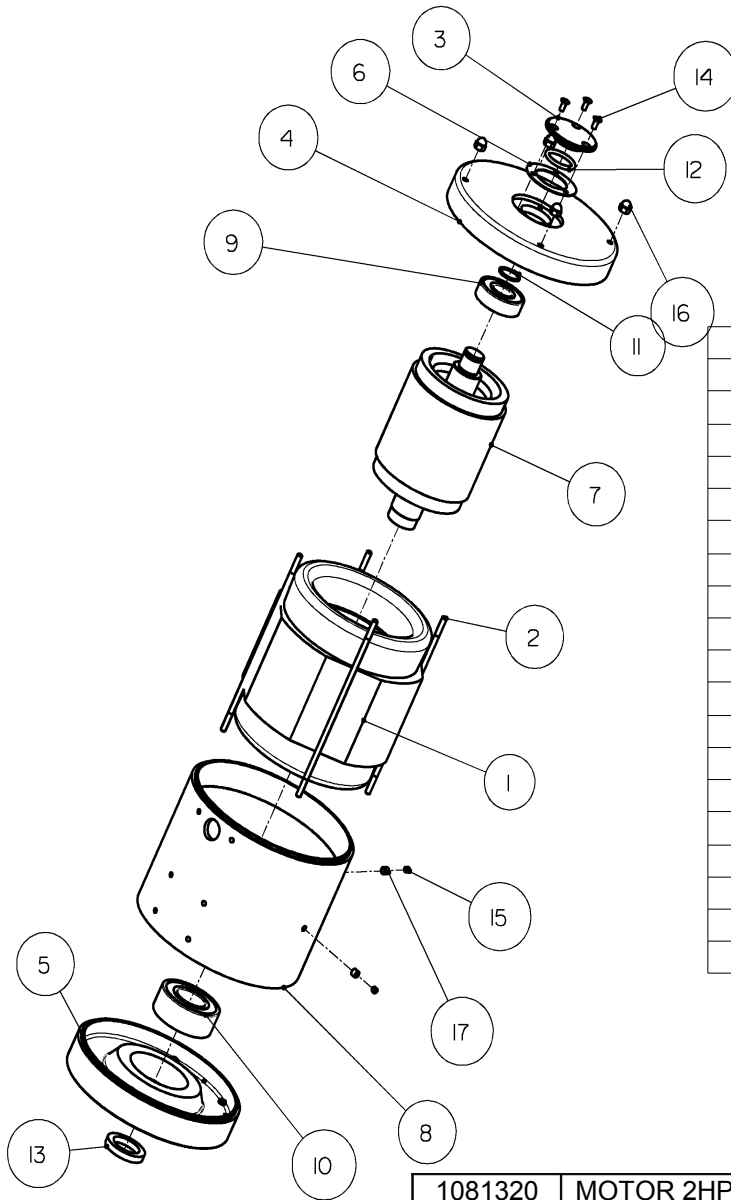
Figure 5 6552010: DRIVE LINK



1081012: MOTOR BASE			
ITEM	PART #	DESCRIPTION	QTY
1	1080006	COVER, HOUSING	1
2	1080012	FLANGE	1
3	1080013	HANDLE MOUNT	1
4	1080019	HANGER	1
5	1080021	GASKET	1
6	3303050	BEARING	1
7	6551390	TUBE	1
8	7003680	BUSHING	1
9	7011230	CONNECTOR	1
10	8215080	SCREW	4
11	8462020	ANCHOR SHACKLE	1
12	8622500	DOWEL PIN	2
13	9211050	SCREW	6
14	9211060	SCREW	8
15	9213070	SCREW	2
16	9213080	SCREW	2

Figure 6 1081012: MOTOR BASE

MOTOR OPTIONS



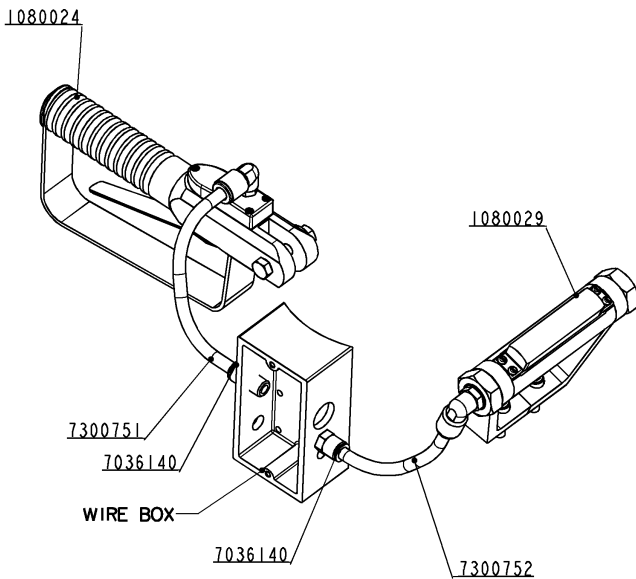
10813__ MOTOR ASSEMBLY			
ITEM	PART #	DESCRIPTION	QTY
1	OPTIONS	STATOR	1
2	1000460	TIE ROD	4
3	1052830	COVER	1
4	1080002	TOP FLANGE	1
5	1080003	BOTTOM FLANGE	1
6	1080015	GASKET	1
7	1081210	ROTOR ASS'Y	1
8	1081220	MOTOR SHELL	1
9	3204040	BEARING	1
10	3522060	BEARING	1
11	5100780	RETAINING RING	1
12	7682140	O-RING	1
13	7798170	SEAL	1
14	8048030	SCREW	3
15	8336020	SET SCREW	2
16	8501090	NUT	4
17	8803100	INSERT	2

1081320	MOTOR 2HP, 220/380V, 3PH, 50HZ, 5.6/3.3 AMPS	2340320
1081330	MOTOR 2HP, 208/416V, 3PH, 50HZ, 5.6/2.8 AMPS	2340330
1081310	MOTOR 2HP, 115/230V, 3PH, 50HZ, 11.0/5.5 AMPS	2340310
1081300	MOTOR 2HP, 42V, 3PH, 50HZ, 36 AMPS	2340300
1081350	MOTOR 2HP, 550V, 3PH, 60HZ, 2.2 AMPS	2330350
1081330	MOTOR 2HP, 230/460V, 3PH, 60HZ, 5.6/2.8 AMPS	2340330
1081340	MOTOR 2HP, 220/380V, 3PH, 60HZ, 5.7/3.3 AMPS	2340340
1081330	MOTOR 2HP, 208/416V, 3PH, 60HZ, 5.6/2.8 AMPS	2324330
MOTOR	DESCRIPTION	STATOR
MOTOR ASSEMBLY OPTIONS		

Figure 7 MOTOR ASSEMBLY

HANDLE / CONTROL OPTIONS

ELECTRIC HANDLES w/o ATD

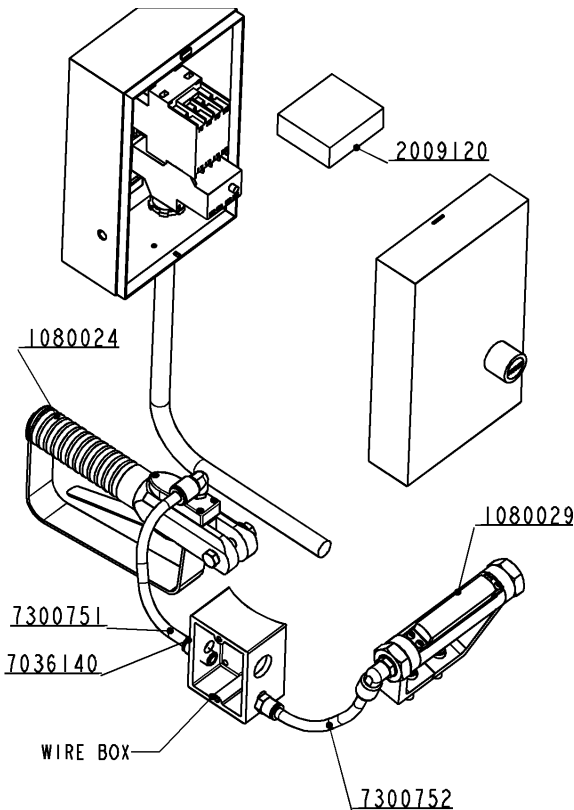


1080030: ELECTRIC HANDLES without ATD			
ITEM	PART #	DESCRIPTION	QTY
1	1080024	ELECTRIC HANDLE	1
2	1080029	ELECTRIC HANDLE, FORWARD	1
3	7036140	FITTING	2
4	7300751	TUBE	1
5	7300752	TUBE	1

Magnetic starter box has to be purchased separately. Please contact Kentmaster representative to obtain correct part number.

Figure 8 1080030: ELECTRIC HANDLES w/o ATD

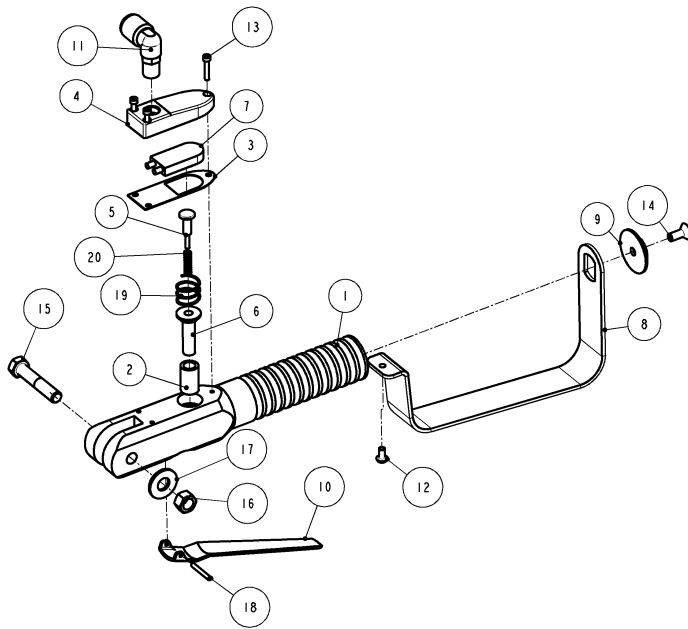
ELECTRIC HANDLES w/ATD



1080032: ELECTRIC HANDLES with ATD			
ITEM	PART #	DESCRIPTION	QTY
1	1080024	ELECTRIC HANDLE	1
2	1080029	ELECTRIC HANDLE, FORWARD	1
3	2009120	ATD TIMER	1
4	OPTIONS	MAGNETIC STARTER BOX	1
5	7036140	FITTING	2
6	7300751	TUBE	1
7	7300752	TUBE	1

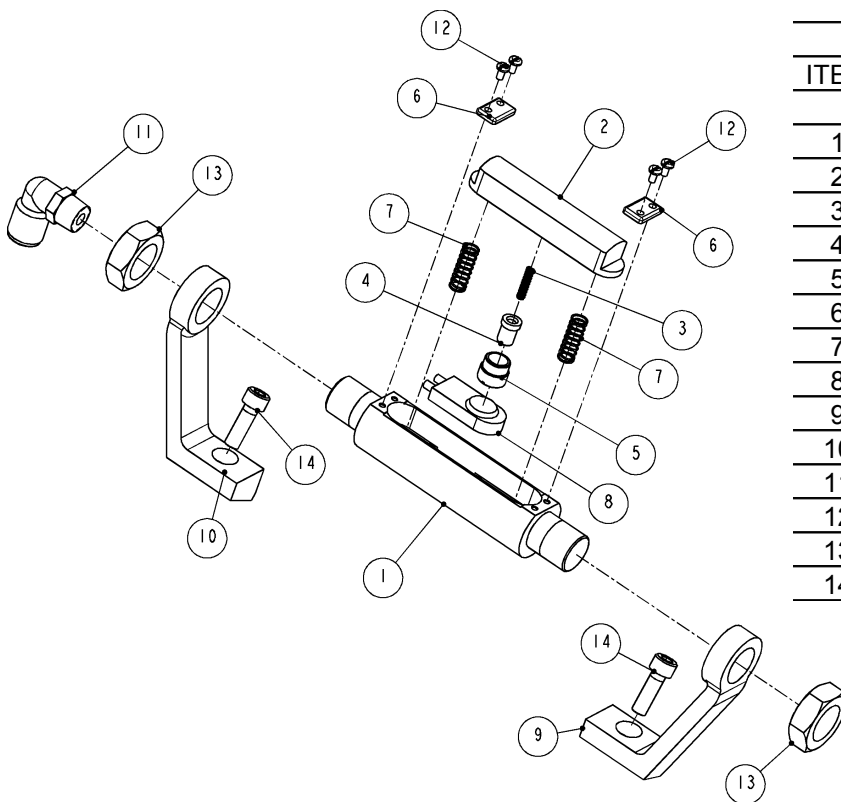
ATD TIMER to be placed into the magnetic starter box. Magnetic starter box has to be purchased separately. Please contact Kentmaster representative to obtain correct part number. See the wiring diagram for wire connections.

Figure 9 1080032: ELECTRIC HANDLES w/ATD



1080024: ELECTRIC HANDLE			
ITEM	PART #	DESCRIPTION	QTY
1	1080022	HANDLE	1
2	1080023	BUSHING	1
3	1080026	GASKET	1
4	1080027	SWITCH HOLDER	1
5	1080039	PIN	1
6	1080040	PIN	1
7	2000690	SWITCH	1
8	6541693	GUARD	1
9	6541720	RETAINER	1
10	6600500	LEVER	1
11	7036560	ELBOW	1
12	8029030	SCREW	1
13	8206060	SCREW	3
14	8241050	SCREW	1
15	8415160	SCREW	1
16	8500150	NUT	1
17	8505160	WASHER	1
18	8620080	PIN	1
19	8890060	SPRING	1
20	8890080	SPRING	1

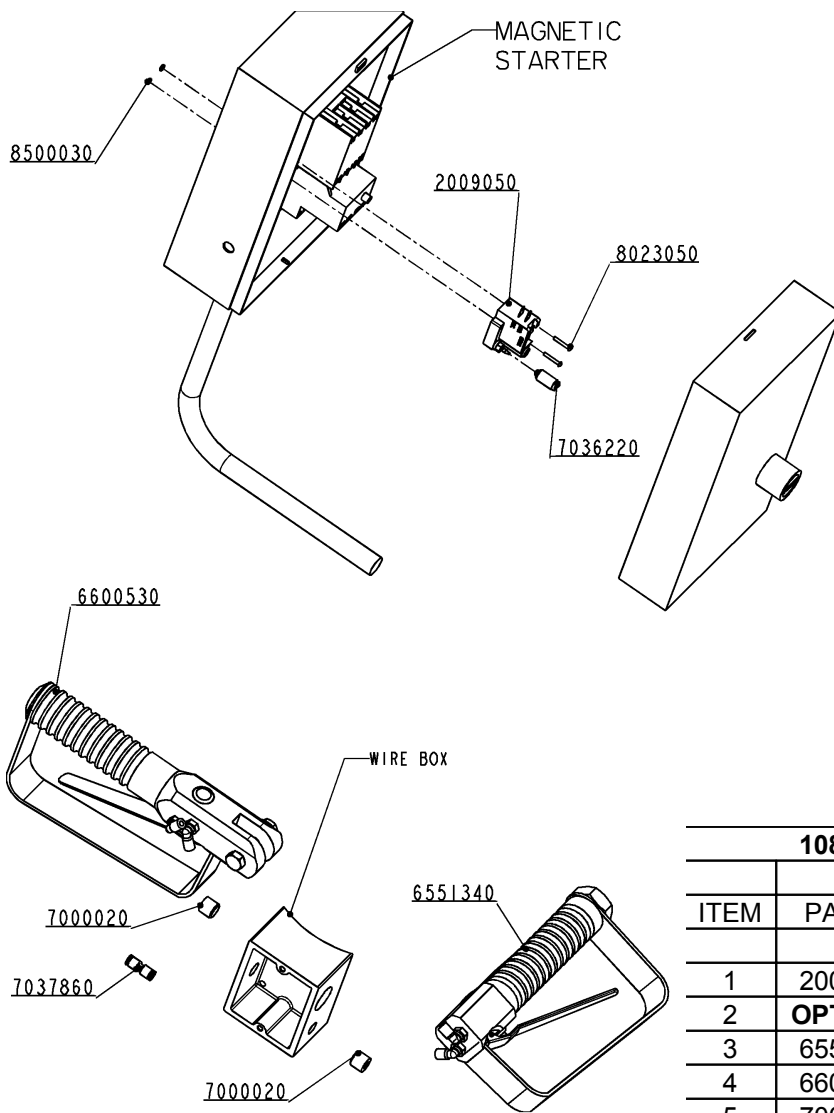
Figure 10 1080024: REAR ELECTRIC HANDLE



1080029: ELECTRIC HANDLE, FRONT			
ITEM	PART #	DESCRIPTION	QTY
1	1302420	HANDLE	1
2	1302430	TRIGGER	1
3	1302440	SPRING	1
4	1302450	PLUNGER	1
5	1302460	HOLDER, PLUNGER	1
6	1302470	HOLDER	2
7	1701550	SPRING	2
8	2000690	SWITCH	1
9	6551271	BRACKET, LEFT	1
10	6551272	BRACKET, RIGHT	1
11	7036450	ELBOW	1
12	8086020	SCREW	4
13	8500580	NUT	2
14	9213080	SCREW	2

Figure 11 1080029: FRONT ELECTRIC HANDLE

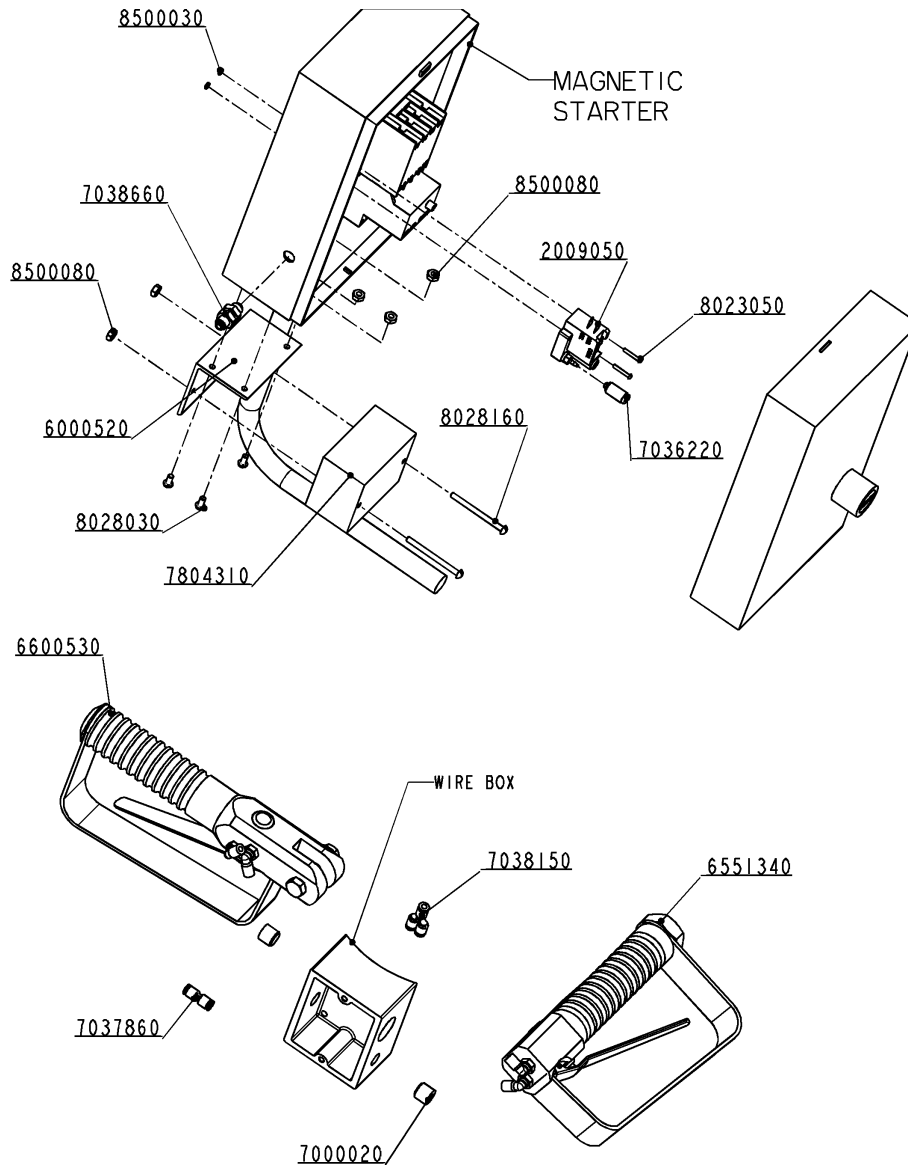
AIR HANDLES w/o ATD



1080031: AIR HANDELS w/o ATD, "EBB"			
ITEM	PART #	DESCRIPTION	QTY
1	2009050	SWITCH	1
2	OPTIONS	MAGNETIC STARTER BOX	1
3	6551340	AIR HANDLE, FRONT	1
4	6600530	AIR HANDLE	1
5	7000020	PLUG	2
6	7036220	CONNECTOR	1
7	7037860	UNION	1
8	7300780	AIR TUBING - RED, 20FT	1
9	7300790	AIR TUBING - GREEN, 20FT	1
10	8023050	SCREW	2
11	8500030	NUT	2

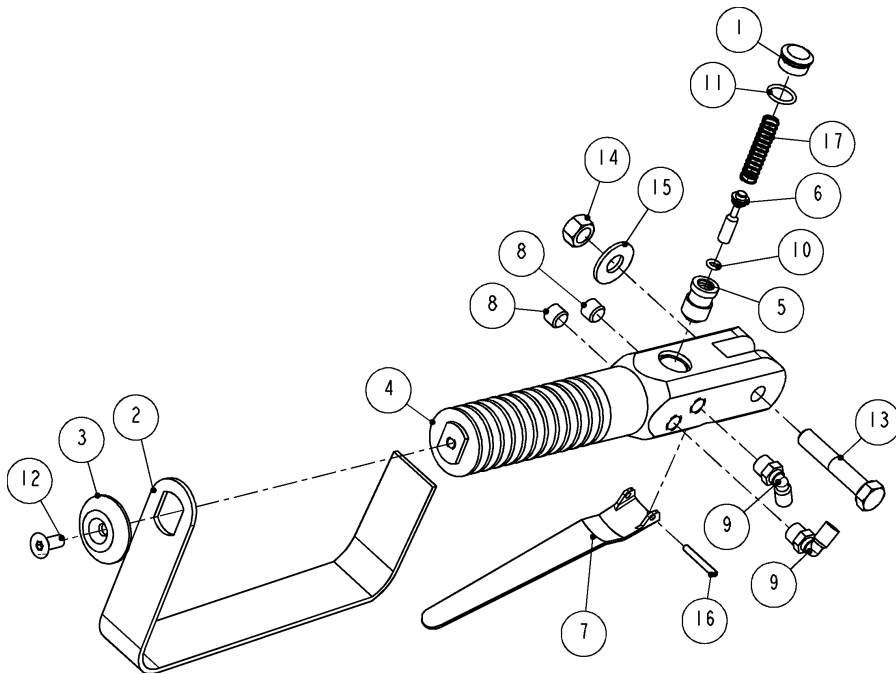
Figure 12 1080031: AIR HANDLES w/o ATD

AIR HANDLES w/ATD



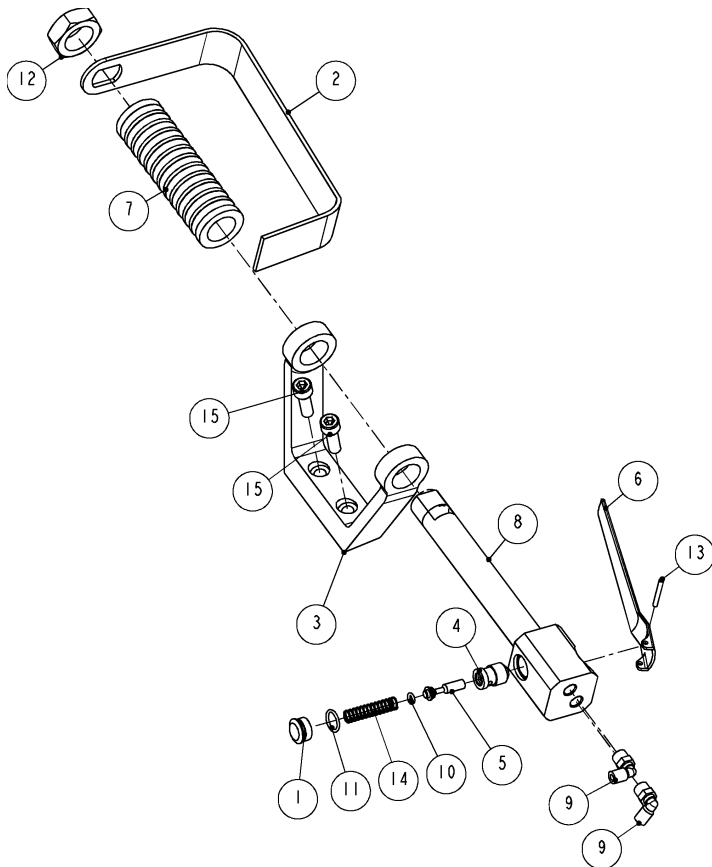
1080033: AIR HANDELS with ATD							
ITEM	PART #	DESCRIPTION	QTY	ITEM	PART #	DESCRIPTION	QTY
1	2009050	SWITCH	1	10	7038660	UNION	1
2	OPTIONS	MAGNETIC STARTER BOX	1	11	7300780	AIR TUBING - RED, 20FT	2
3	6000520	BRACKET	1	12	7300790	AIR TUBING - GREEN, 20FT	2
4	6551340	AIR HANDLE, FRONT	1	13	7804310	AIR LOGIC MODULE	1
5	6600530	AIR HANDLE	1	14	8023050	SCREW	2
6	7000020	PLUG	2	15	8028030	SCREW	3
7	7036220	CONNECTOR	1	16	8028160	SCREW	2
8	7037860	UNION	1	17	8500030	NUT	2
9	7038150	UNION	1	18	8500080	NUT	5

Figure 13 1080033: AIR HANDLES w/ATD



6600530: AIR HANDLE, REAR			
ITEM	PART #	DESCRIPTION	QTY
1	6300770	VALVE PLUG	1
2	6541690	GUARD	1
3	6541720	RETAINER	1
4	6600340	HANDLE	1
5	6600350	BUSHING	1
6	6600360	VALVE STEM	1
7	6600500	LEVER	1
8	7000010	PLUG	2
9	7036510	ELBOW	2
10	7680080	O-RING	1
11	7680140	O-RING	1
12	8241050	SCREW	1
13	8415160	SCREW	1
14	8500150	NUT	1
15	8505160	WASHER	1
16	8620080	PIN	1
17	8890010	SPRING	1

Figure 14 6600530: AIR HANDLE, REAR



6551340: AIR HANDLE, FRONT			
ITEM	PART #	DESCRIPTION	QTY
1	6300770	VALVE PLUG	1
2	6541690	GUARD	1
3	6551270	BRACKET	1
4	6600350	BUSHING	1
5	6600360	VALVE STEM	1
6	6600500	LEVER	1
7	6620350	SLEEVE	1
8	6620390	HANDLE	1
9	7036510	ELBOW	2
10	7680080	O-RING	1
11	7680140	O-RING	1
12	8500580	NUT	1
13	8620080	PIN	1
14	8890010	SPRING	1
15	9213080	SCREW	2

Figure 15 6551340: AIR HANDLE, FRONT

POWER SUPPLY

POWER SUPPLY, NO ATD

1080034: POWER SUPPLY,NO ATD			
ITEM	PART #	DESCRIPTION	QTY
1	1000050	POWER CORD w/MALE PLUG	1
2	2001620	SOCKET, FEMALE	1
3	2008180	CABLE CONNECTOR	1
4	2008220	CORD GRIP	1

POWER CORD 1000050: POWER CORD 20FT LONG (2001240) + MALE PLUG (2001610)

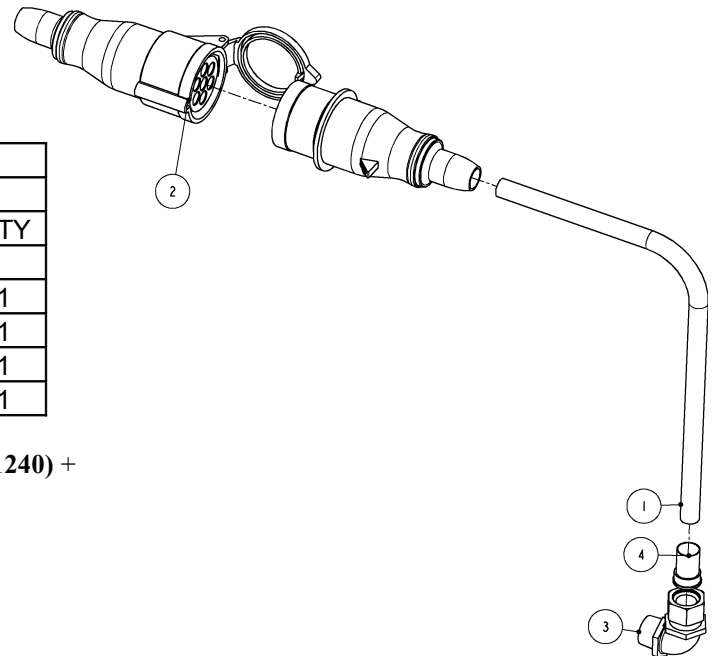


Figure 16 1080034: POWER SUPPLY, NO ATD

POWER SUPPLY, ATD

1080035: POWER SUPPLY, WITH ANTI-TIE DOWN			
ITEM	PART #	DESCRIPTION	QTY
1	2001080	POWER CORD	1
2	2001610	PLUG, MALE	1
3	2001620	SOCKET, FEMALE	1
4	2008180	CABLE CONNECTOR	1
5	2008220	CORD GRIP	1

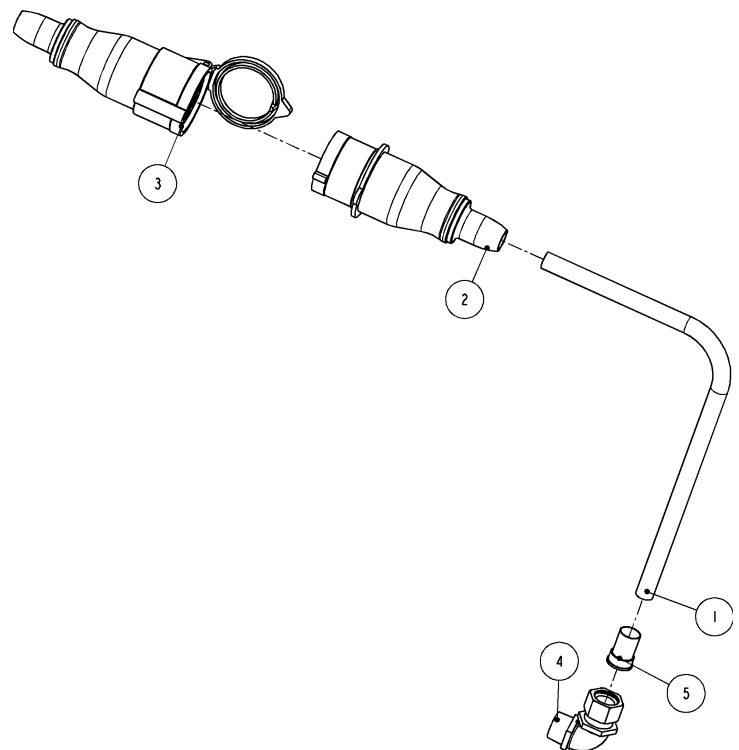
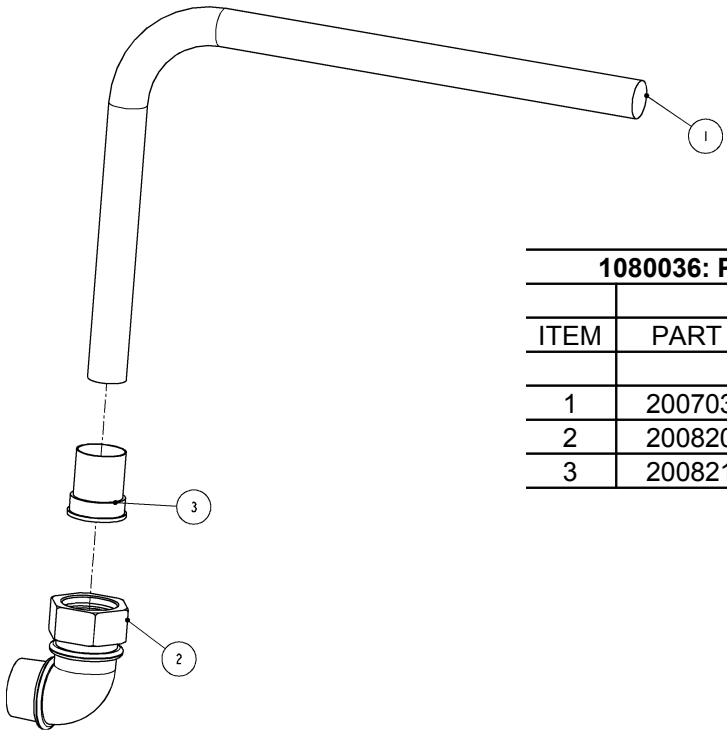


Figure 17 1080035: POWER SUPPLY, ATD

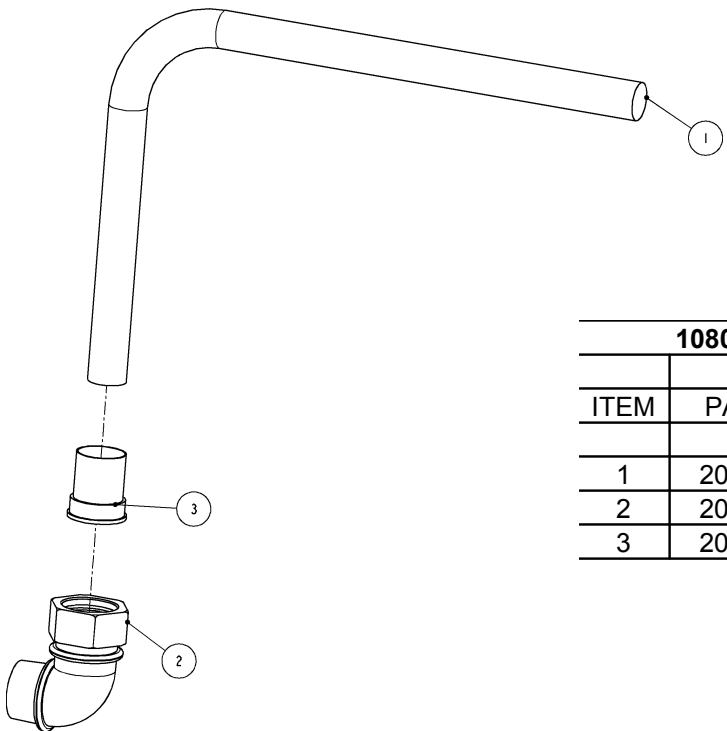
POWER SUPPLY, 42V, NO ATD



1080036: POWER SUPPLY, 42V, NO ATD			
ITEM	PART #	DESCRIPTION	QTY
1	2007030	POWER CORD	1
2	2008200	CABLE CONNECTOR	1
3	2008210	CORD GRIP	1

Figure 18 1080036: POWER SUPPLY, 42V, NO ATD

POWER SUPPLY, 42V, ATD



1080037: POWER SUPPLY, 42V, ATD			
ITEM	PART #	DESCRIPTION	QTY
1	2001090	POWER CORD	1
2	2008200	CABLE CONNECTOR	1
3	2008210	CORD GRIP	1

Figure 19 1080037: POWER SUPPLY, 42V, ATD

WIRING DIAGRAMS

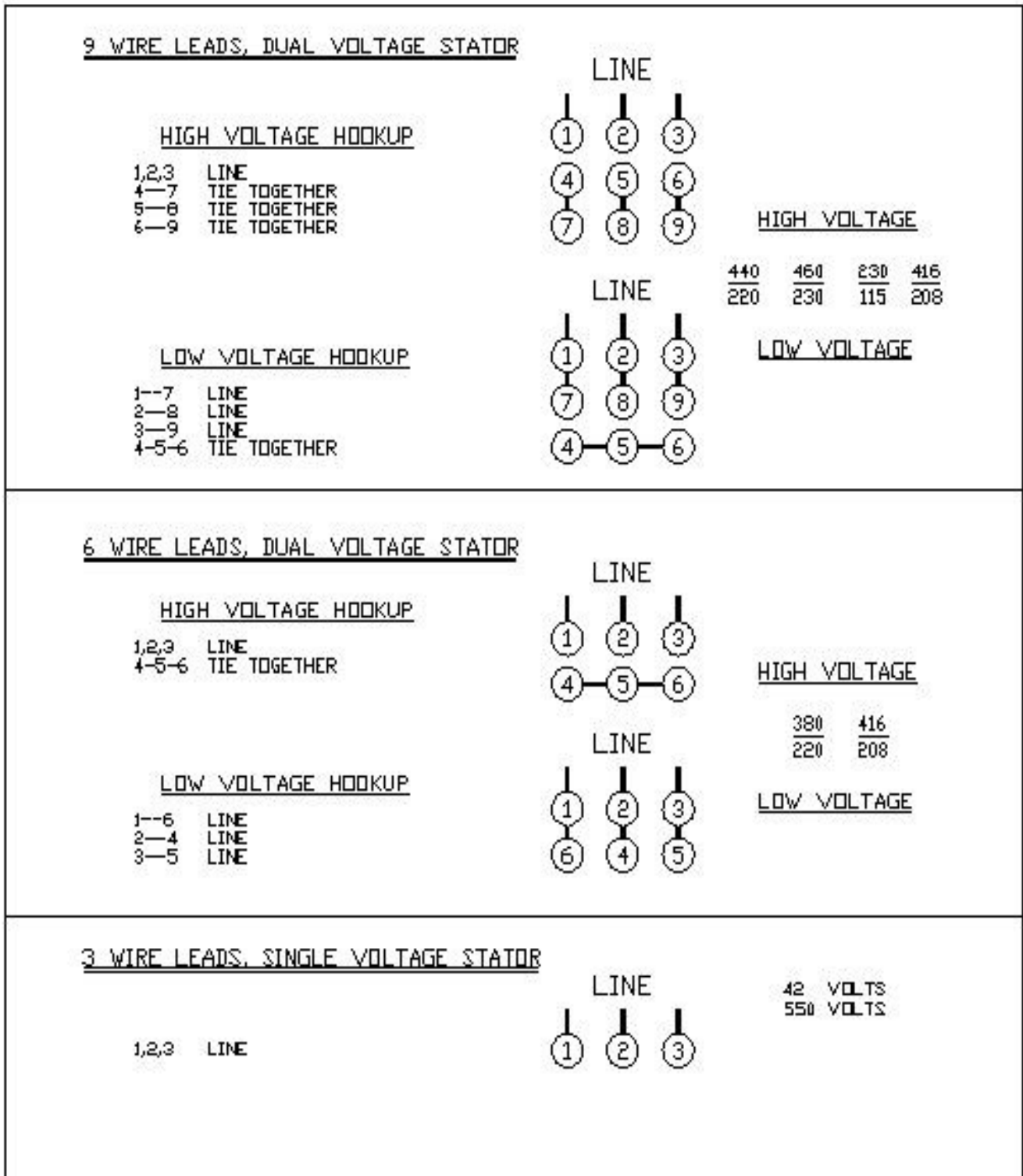
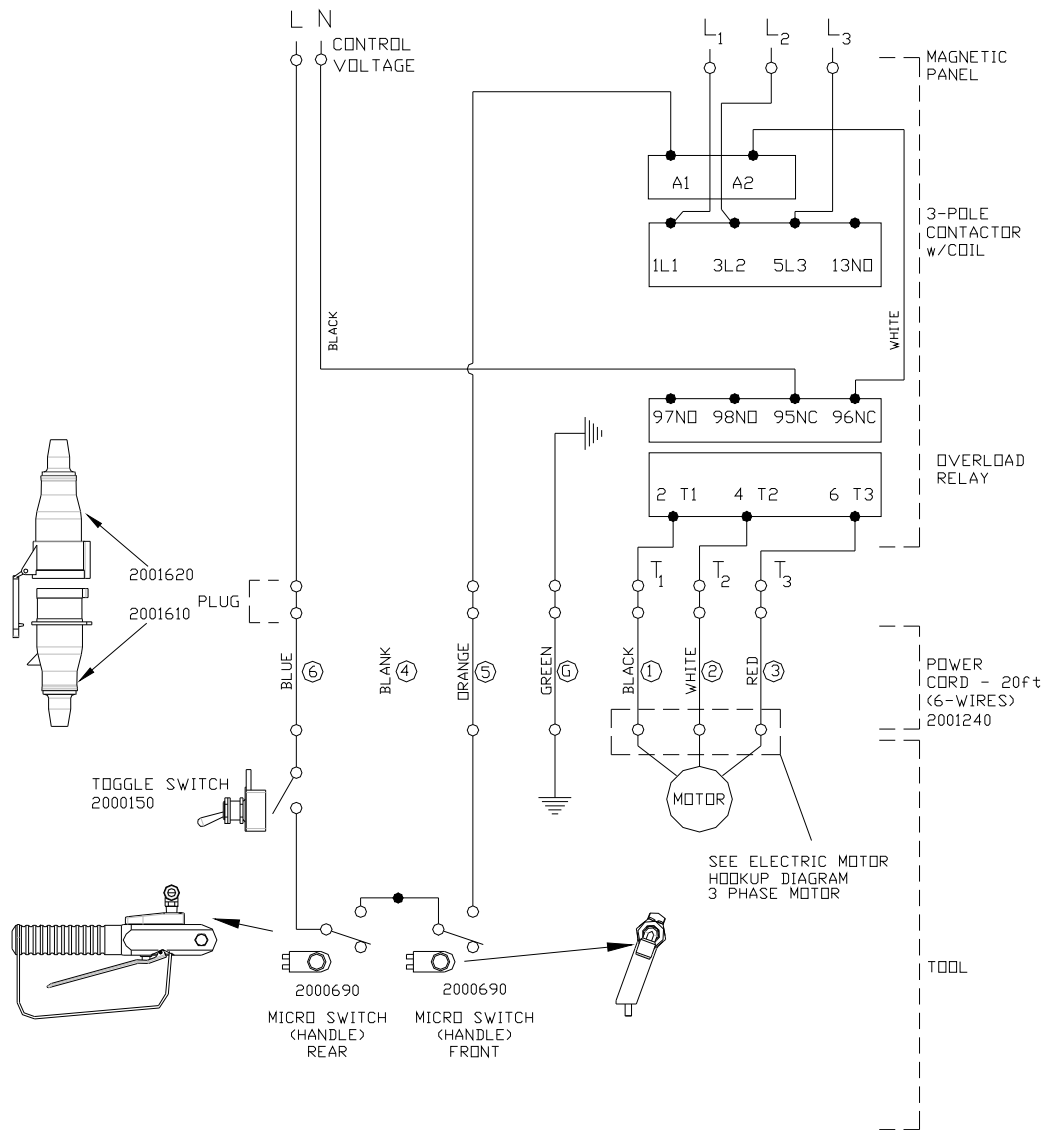


Figure 20 ELECTRIC MOTOR LEAD HOOKUP DIAGRAM

DIFFERENT CONTROL AND MOTOR VOLTAGE, w/o ATD



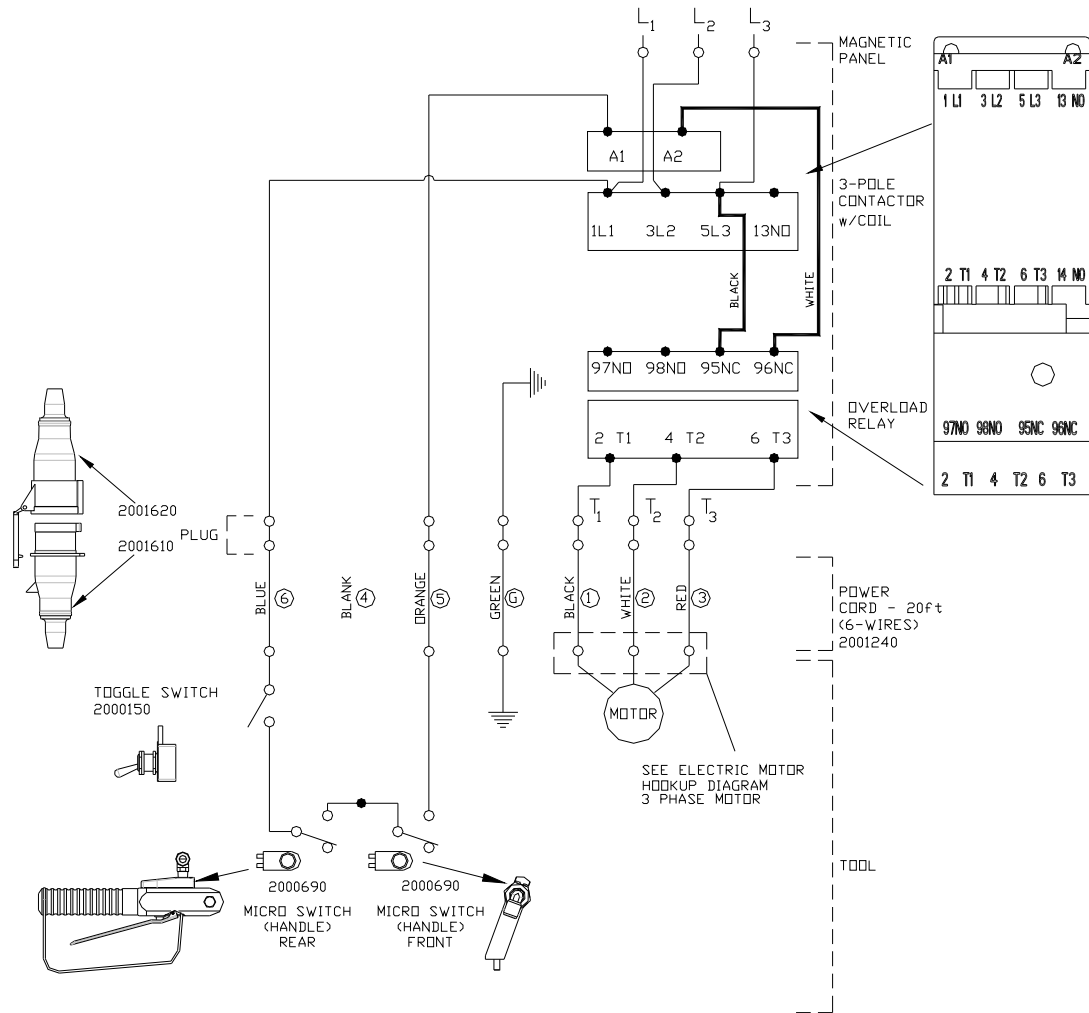
NOTES:

1. DO NOT ATTEMPT OR MAKE REPAIRS ON THE MACHINE WHILE POWER IS ON.
2. ALL ELECTRICAL WORK MUST BE PERFORMED BY A QUALIFIED ELECTRICIAN.
3. THE ELECTRICAL DIAGRAM SHOWS THE MACHINE IN THE "OFF" POSITION.
4. THE GROUND WIRE (GREEN) OF THE POWER CABLE IS CONNECTED TO THE FRAME OF THE MACHINE.

To obtain the correct Kentmaster part number for 3-pole contactor and overload relay, please contact the Kentmaster representative.

Figure 21 WIRING DIAGRAM – different control and motor voltage, w/o ATD

SAME CONTROL AND MOTOR VOLTAGE, w/o ATD



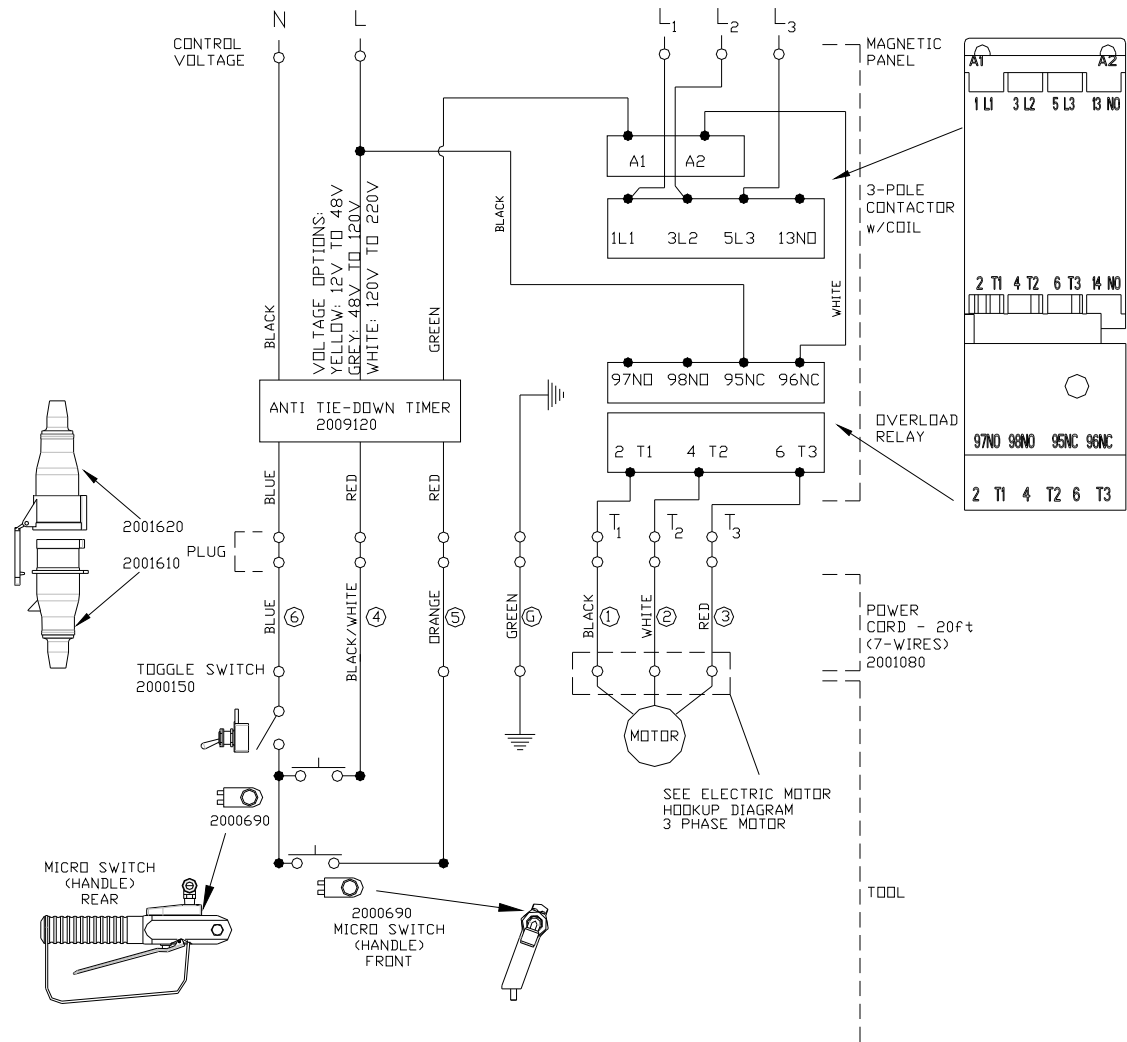
NOTES:

1. DO NOT ATTEMPT OR MAKE REPAIRS ON THE MACHINE WHILE POWER IS ON.
2. ALL ELECTRICAL WORK MUST BE PERFORMED BY A QUALIFIED ELECTRICIAN.
3. THE ELECTRICAL DIAGRAM SHOWS THE MACHINE IN THE "OFF" POSITION.
4. THE GROUND WIRE (GREEN) OF THE POWER CABLE IS CONNECTED TO THE FRAME OF THE MACHINE.

To obtain the correct Kentmaster part number for 3-pole contactor and overload relay, please contact the Kentmaster representative.

Figure 22 WIRING DIAGRAM – same control and motor voltage, w/o ATD

DIFFERENT CONTROL AND MOTOR VOLTAGE, with ATD



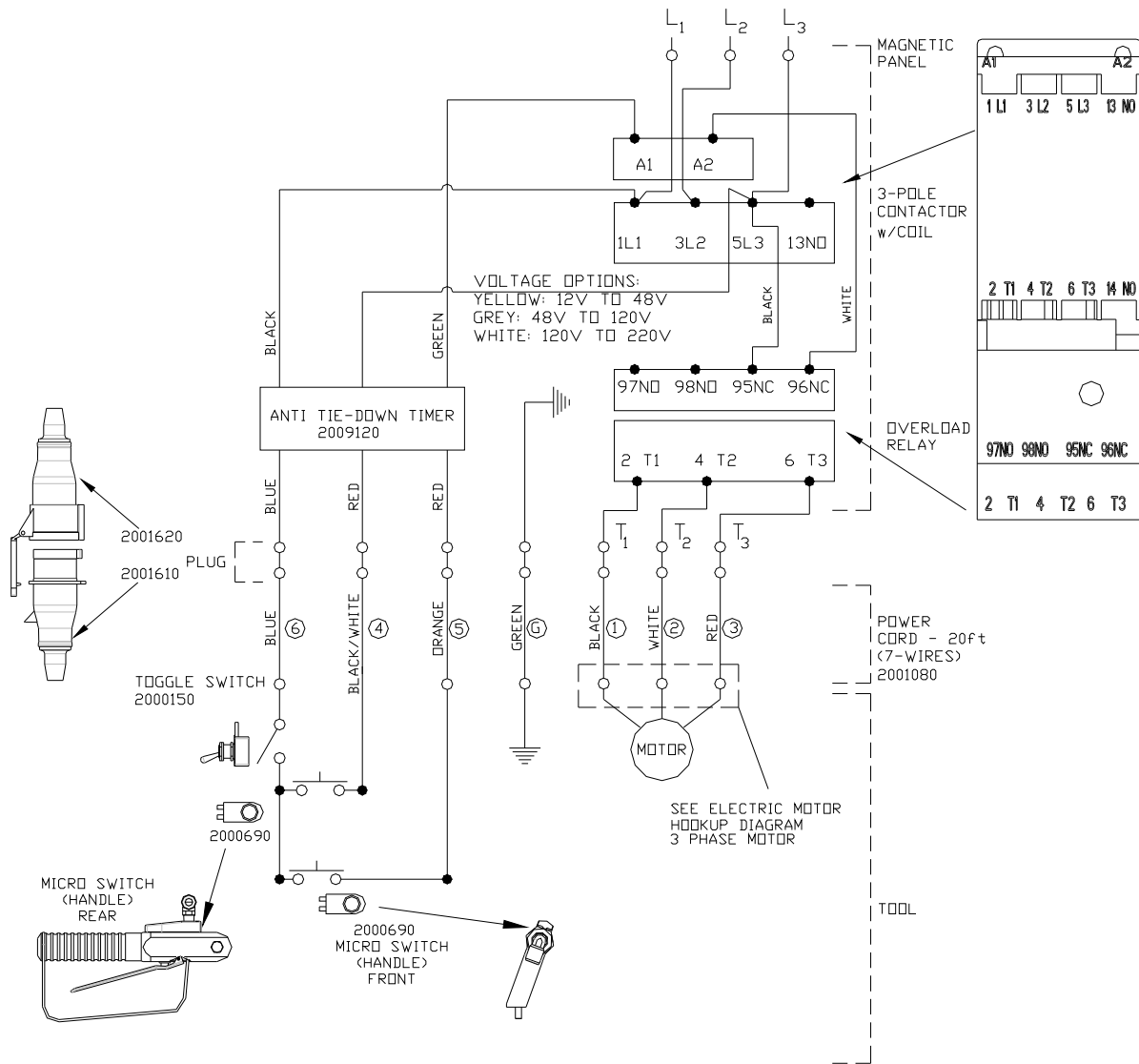
NOTES:

1. DO NOT ATTEMPT OR MAKE REPAIRS ON THE MACHINE WHILE POWER IS ON.
2. ALL ELECTRICAL WORK MUST BE PERFORMED BY A QUALIFIED ELECTRICIAN.
3. THE ELECTRICAL DIAGRAM SHOWS THE MACHINE IN THE "OFF" POSITION.
4. THE GROUND WIRE (GREEN) OF THE POWER CABLE IS CONNECTED TO THE FRAME OF THE MACHINE.

To obtain the correct Kentmaster part number for 3-pole contactor and overload relay, please contact the Kentmaster representative.

Figure 23 WIRING DIAGRAM – different control and motor voltage, with ATD

SAME CONTROL AND MOTOR VOLTAGE, with ATD



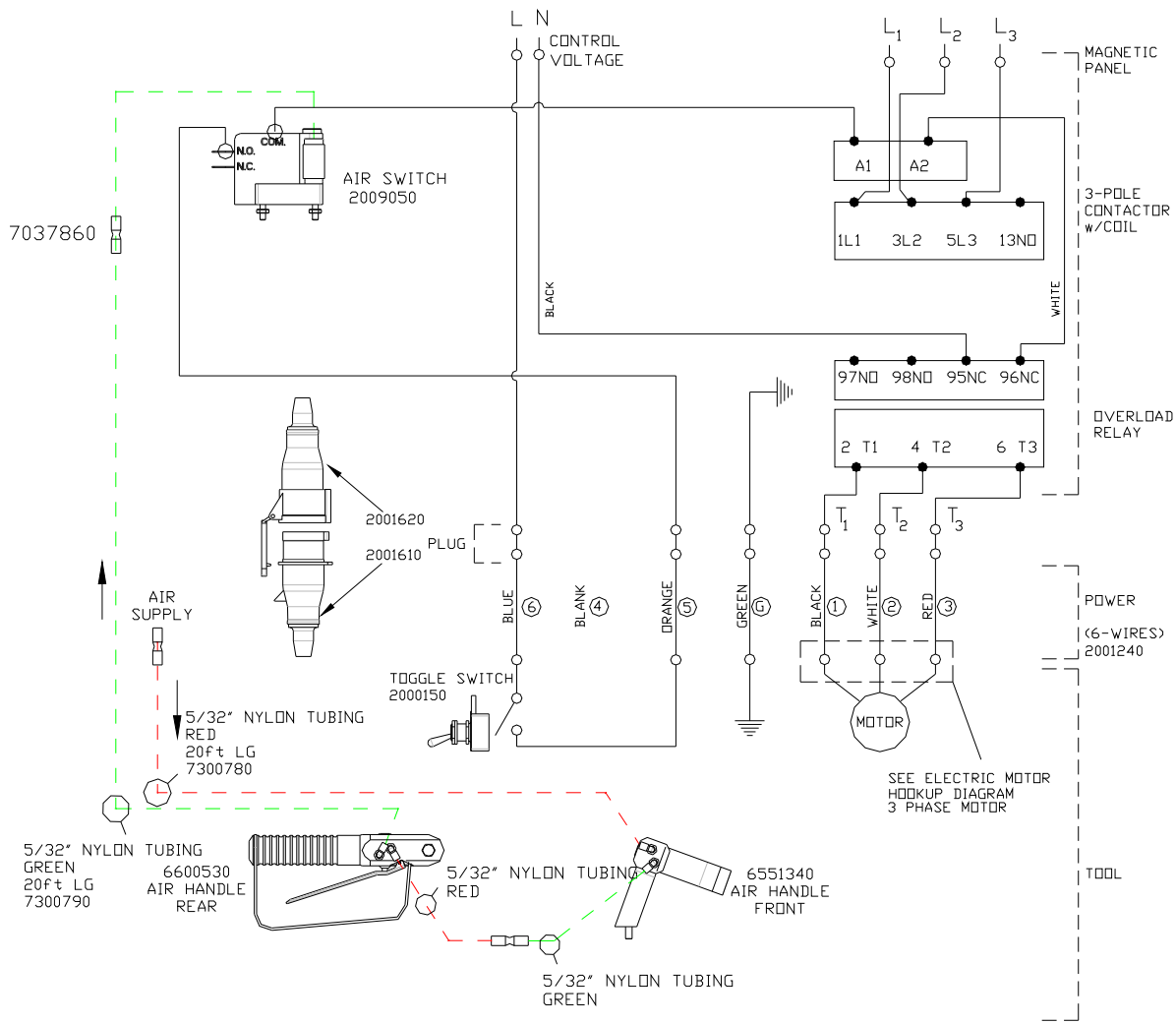
NOTES:

1. DO NOT ATTEMPT OR MAKE REPAIRS ON THE MACHINE WHILE POWER IS ON.
2. ALL ELECTRICAL WORK MUST BE PERFORMED BY A QUALIFIED ELECTRICIAN.
3. THE ELECTRICAL DIAGRAM SHOWS THE MACHINE IN THE "OFF" POSITION.
4. THE GROUND WIRE (GREEN) OF THE POWER CABLE IS CONNECTED TO THE FRAME OF THE MACHINE.

To obtain the correct Kentmaster part number for 3-pole contactor and overload relay, please contact the Kentmaster representative.

Figure 24 WIRING DIAGRAM – same control and motor voltage, with ATD

AIR, DIFFERENT CONTROL AND MOTOR VOLTAGE, w/o ATD



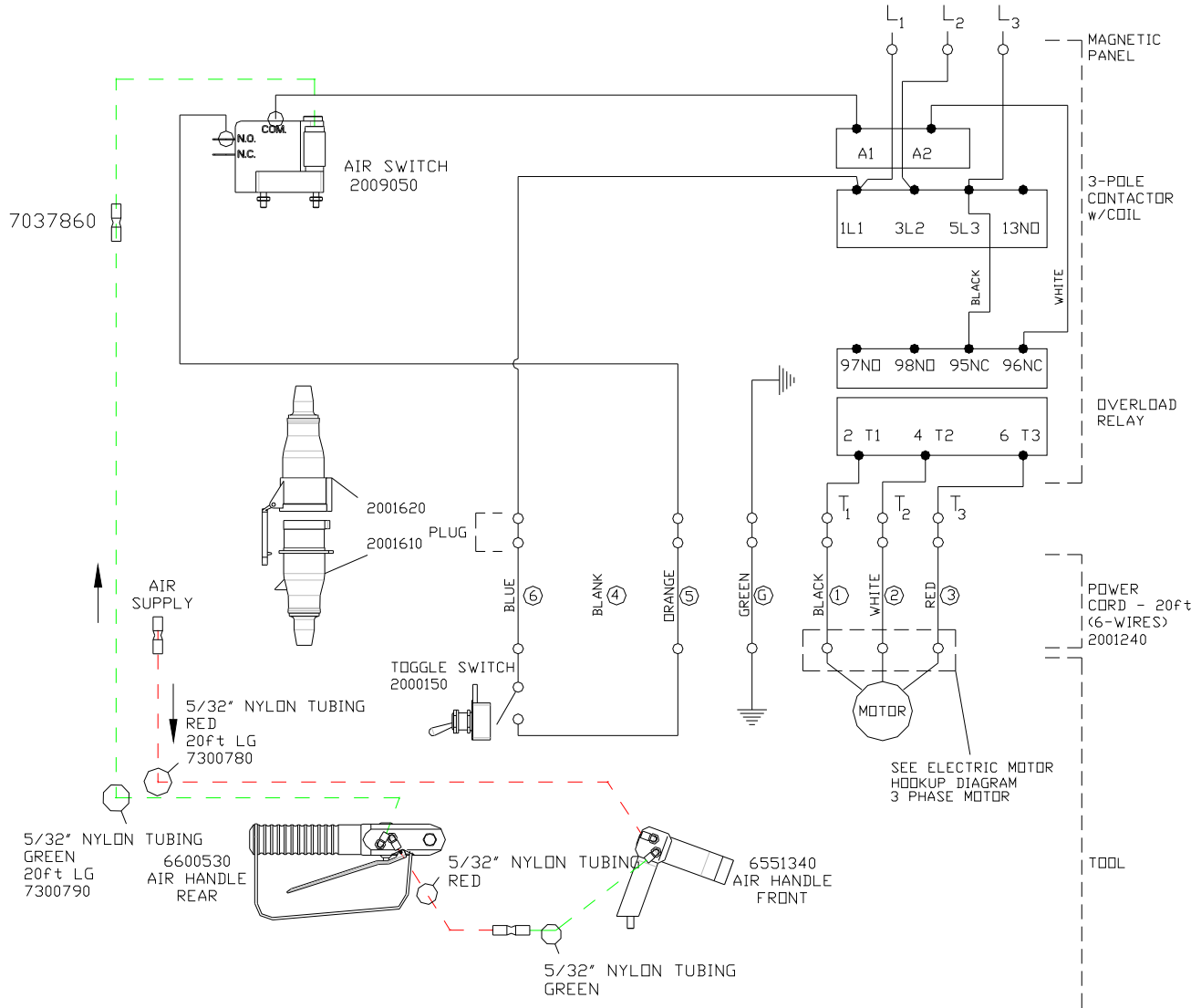
NOTES:

1. DO NOT ATTEMPT OR MAKE REPAIRS ON THE MACHINE WHILE POWER IS ON.
2. ALL ELECTRICAL WORK MUST BE PERFORMED BY A QUALIFIED ELECTRICIAN.
3. THE ELECTRICAL DIAGRAM SHOWS THE MACHINE IN THE "OFF" POSITION.
4. THE GROUND WIRE (GREEN) OF THE POWER CABLE IS CONNECTED TO THE FRAME OF THE MACHINE.

To obtain the correct Kentmaster part number for 3-pole contactor and overload relay, please contact the Kentmaster representative.

Figure 25 WIRING DIAGRAM – Air, different control and motor voltage, w/o ATD

AIR, SAME CONTROL AND MOTOR VOLTAGE, w/o ATD



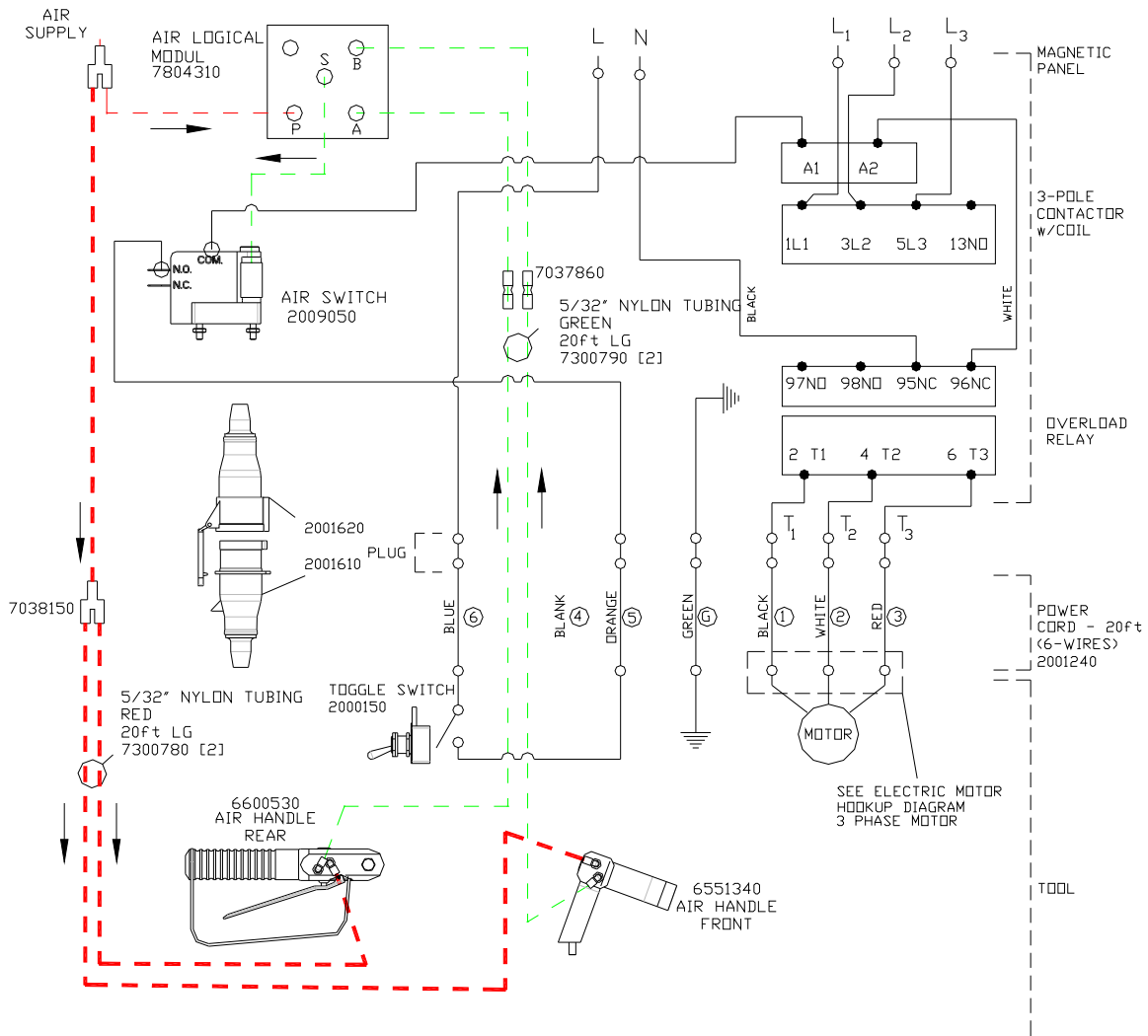
NOTES:

1. DO NOT ATTEMPT OR MAKE REPAIRS ON THE MACHINE WHILE POWER IS ON.
2. ALL ELECTRICAL WORK MUST BE PERFORMED BY A QUALIFIED ELECTRICIAN.
3. THE ELECTRICAL DIAGRAM SHOWS THE MACHINE IN THE "OFF" POSITION.
4. THE GROUND WIRE (GREEN) OF THE POWER CABLE IS CONNECTED TO THE FRAME OF THE MACHINE.

To obtain the correct Kentmaster part number for 3-pole contactor and overload relay, please contact the Kentmaster representative.

Figure 26 WIRING DIAGRAM – Air, same control and motor voltage, w/o ATD

AIR, DIFFERENT CONTROL AND MOTOR VOLTAGE, with ATD



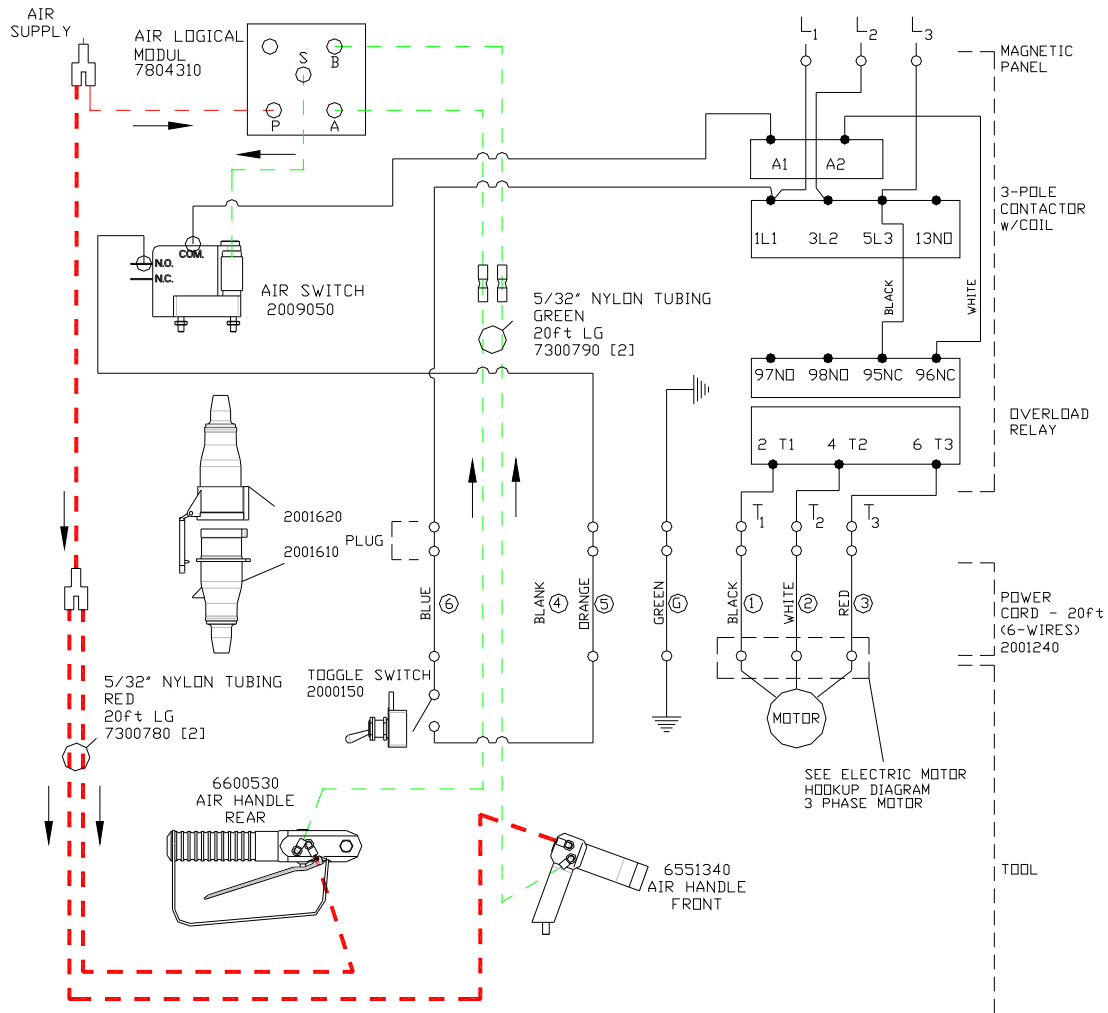
NOTES:

1. DO NOT ATTEMPT OR MAKE REPAIRS ON THE MACHINE WHILE POWER IS ON.
2. ALL ELECTRICAL WORK MUST BE PERFORMED BY A QUALIFIED ELECTRICIAN.
3. THE ELECTRICAL DIAGRAM SHOWS THE MACHINE IN THE "OFF" POSITION.
4. THE GROUND WIRE (GREEN) OF THE POWER CABLE IS CONNECTED TO THE FRAME OF THE MACHINE.

To obtain the correct Kentmaster part number for 3-pole contactor and overload relay, please contact the Kentmaster representative.

Figure 27 WIRING DIAGRAM – Air, different control and motor voltage, with ATD

AIR, SAME CONTROL AND MOTOR VOLTAGE, with ATD



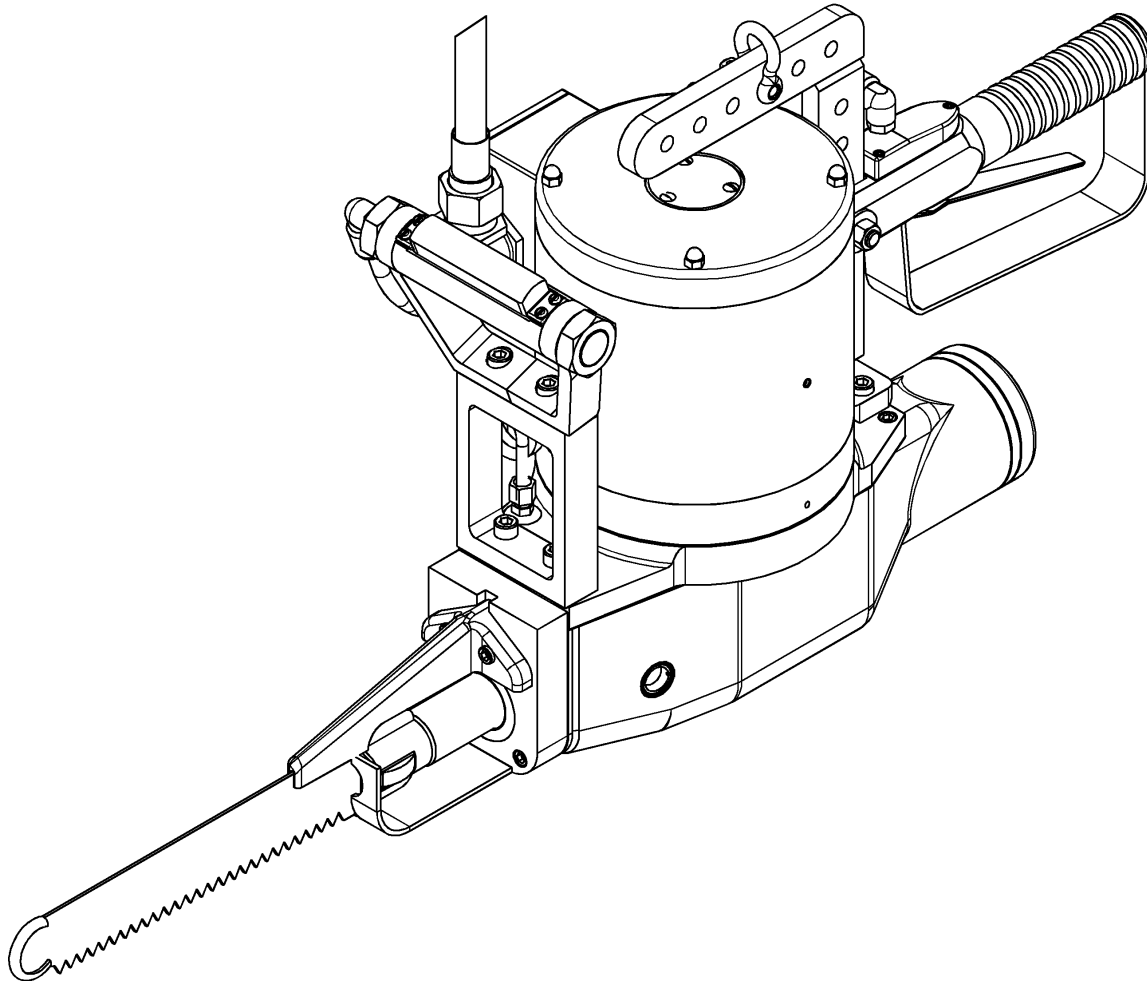
NOTES:

1. DO NOT ATTEMPT OR MAKE REPAIRS ON THE MACHINE WHILE POWER IS ON.
2. ALL ELECTRICAL WORK MUST BE PERFORMED BY A QUALIFIED ELECTRICIAN.
3. THE ELECTRICAL DIAGRAM SHOWS THE MACHINE IN THE "OFF" POSITION.
4. THE GROUND WIRE (GREEN) OF THE POWER CABLE IS CONNECTED TO THE FRAME OF THE MACHINE.

To obtain the correct Kentmaster part number for 3-pole contactor and overload relay, please contact the Kentmaster representative.

WIRING DIAGRAM – Air, same control and motor voltage, with ATD

[ENGLISH]

GENERAL INFORMATION

MODEL
“EBB-II” ELECTRIC BEEF BRISKET SAW

SERVICE CENTERS

KENTMASTER LTD. (U.K)
 16 AVONBANK INDUSTRIAL CENTRE
 WEST TOWN ROAD
 AVONMOUTH - BRISTOL BS11 9DE
 UNITED KINGDOM

☎ **TELEPHONE: ++ 44- (0) 117- 9235035**
FAX: ++ 44- (0) 117- 9829010

KENTMASTER MFG. CO., INC.
 1801 SOUTH MOUNTAIN AVE.
 MONROVIA, CALIFORNIA 91016
 UNITED STATES OF AMERICA

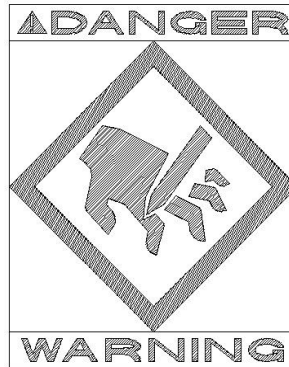
☎ **TELEPHONE: (626) 359-8888**
FAX: (626) 303-5151

KENTMASTER MFG. CO., INC. 1801 SOUTH MOUNTAIN AVE., MONROVIA, CALIFORNIA 91016 UNITED STATES OF AMERICA

☎ **TELEPHONE: (626) 359-8888 FAX: (626) 303-5151**

NOTICE TO EMPLOYER AND PURCHASER OF TOOL
NOTICE TO SAFETY DIRECTOR

You have purchased a powerful tool that, if misused, can cause severe injury and harm to your employees. You must instruct your employees in the safe and proper use of this tool and to follow the safety procedures and instructions that have been supplied by the manufacturer of this tool. Please follow the following instructions.



1. Instruct tool operators to test the tool each day before using it to be sure it does not malfunction. Remove and repair any tool that malfunctions.
2. Instruct tool operators to immediately stop using a tool that malfunctions or is defective.
3. Instruct personnel to immediately remove all tools that malfunction. Be sure to disconnect tool from power supply.
4. Instruct all personnel to stay clear of tool, and not to stand or walk in front of, or next to tool when in use.
5. Point out to all personnel the dangers related to the misuse of tool and the importance of following safety procedures and instructions.
6. Do not make, or allow others to make, alterations or modifications to this tool. Replace all lost or illegible labels.
7. Follow all safety, installation and maintenance instructions provided with this tool. Establish proper safety procedures in accordance with local and national requirements to prevent accidental energizing of tool that can cause injuries.
8. If this tool is sold or change in ownership takes place, you must provide the new owner all safety instructions, notices and maintenance instructions you were originally provided. You can obtain additional copies of the instructions from Kentmaster, free of charge upon request.
9. Give copies of instructions to:
 - (A) Tool Operators**
 - (B) Maintenance Supervisor**
 - (C) Clean-up Supervisor**

GENERAL INFORMATION

COVERING: SAFETY PRECAUTIONS AND PLACING INTO SERVICE
ELECTRICALLY POWERED BEEF BRISKET SAW

READ THIS MANUAL CAREFULLY BEFORE INSTALLING, OPERATING OR SERVICING THIS TOOL

IT IS THE RESPONSIBILITY OF THE EMPLOYER TO PLACE THIS INFORMATION INTO THE HANDS OF THE OPERATOR.

PLACING INTO SERVICE

 **WARNING**

= Hazards or unsafe practices which could result in severe personal injury, death or substantial property damage.

 **CAUTION**

= Hazards or unsafe practices which could result in minor personal injury, product or property damage.

 **NOTICE**

= Important installation, operation or maintenance information.

 **WARNING**

Installation, adjustment repair and maintenance of this tool must be made by trained and qualified personnel.

 **WARNING**

Always disconnect power supply from tool before:

- (A) Installing or removing blade from tool.
- (B) Making repairs or adjustments to the tool.
- (C) performing maintenance or cleanup work.

INDEX

<u>OPERATING AND SAFETY INSTRUCTIONS.....</u>	<u>2</u>
<u>OPERATING INSTRUCTIONS.....</u>	<u>3</u>
<u>SERVICE.....</u>	<u>3</u>
<u>PARTS BOOK.....</u>	<u>4</u>
<u>MOTOR OPTIONS.....</u>	<u>8</u>
<u>HANDLE / CONTROL OPTIONS.....</u>	<u>9</u>
ELECTRIC HANDLES w/o ATD.....	9
ELECTRIC HANDLES w/ATD.....	9
AIR HANDLES w/o ATD.....	11
AIR HANDLES w/ATD.....	12
<u>POWER SUPPLY.....</u>	<u>14</u>
POWER SUPPLY, NO ATD.....	14
POWER SUPPLY, ATD.....	14
POWER SUPPLY, 42V, NO ATD.....	15
POWER SUPPLY, 42V, ATD.....	15
<u>WIRING DIAGRAMS.....</u>	<u>16</u>
DIFFERENT CONTROL AND MOTOR VOLTAGE, w/o ATD.....	17
SAME CONTROL AND MOTOR VOLTAGE, w/o ATD.....	18
DIFFERENT CONTROL AND MOTOR VOLTAGE, with ATD.....	19
SAME CONTROL AND MOTOR VOLTAGE, with ATD.....	20
AIR, DIFFERENT CONTROL AND MOTOR VOLTAGE, w/o ATD.....	21
AIR, SAME CONTROL AND MOTOR VOLTAGE, w/o ATD.....	22
AIR, DIFFERENT CONTROL AND MOTOR VOLTAGE, with ATD.....	23
AIR, SAME CONTROL AND MOTOR VOLTAGE, with ATD.....	24
<u>NOTICE TO EMPLOYER AND PURCHASER OF TOOL.....</u>	<u>26</u>
<u>GENERAL INFORMATION.....</u>	<u>27</u>
<u>INDEX.....</u>	<u>28</u>
<u>FIGURES - INDEX.....</u>	<u>29</u>

FIGURES - INDEX

<i>Figure 1 MODEL EBB-II – BLADE REPLACEMENT.....</i>	<i>3</i>
<i>Figure 2 MODEL “EBB-II” – MAIN ASSEMBLY.....</i>	<i>4</i>
<i>Figure 3 BOM FOR MODEL “EBB-II”.....</i>	<i>5</i>
<i>Figure 4 6552020: HOUSING ASSEMBLY.....</i>	<i>6</i>
<i>Figure 5 6552010: DRIVE LINK.....</i>	<i>7</i>
<i>Figure 6 1081012: MOTOR BASE.....</i>	<i>7</i>
<i>Figure 7 MOTOR ASSEMBLY.....</i>	<i>8</i>
<i>Figure 8 1080030: ELECTRIC HANDLES w/o ATD.....</i>	<i>9</i>
<i>Figure 9 1080032: ELECTRIC HANDLES w/ATD.....</i>	<i>9</i>
<i>Figure 10 1080024: REAR ELECTRIC HANDLE.....</i>	<i>10</i>
<i>Figure 11 1080029: FRONT ELECTRIC HANDLE.....</i>	<i>10</i>
<i>Figure 12 1080031: AIR HANDLES w/o ATD.....</i>	<i>11</i>
<i>Figure 13 1080033: AIR HANDLES w/ATD.....</i>	<i>12</i>
<i>Figure 14 6600530: AIR HANDLE, REAR.....</i>	<i>13</i>
<i>Figure 15 6551340: AIR HANDLE, FRONT.....</i>	<i>13</i>
<i>Figure 16 1080034: POWER SUPPLY, NO ATD.....</i>	<i>14</i>
<i>Figure 17 1080035: POWER SUPPLY, ATD.....</i>	<i>14</i>
<i>Figure 18 1080036: POWER SUPPLY, 42V, NO ATD.....</i>	<i>15</i>
<i>Figure 19 1080037: POWER SUPPLY, 42V, ATD.....</i>	<i>15</i>
<i>Figure 20 ELECTRIC MOTOR LEAD HOOKUP DIAGRAM.....</i>	<i>16</i>
<i>Figure 21 WIRING DIAGRAM – different control and motor voltage, w/o ATD.....</i>	<i>17</i>
<i>Figure 22 WIRING DIAGRAM – same control and motor voltage, w/o ATD.....</i>	<i>18</i>
<i>Figure 23 WIRING DIAGRAM – different control and motor voltage, with ATD.....</i>	<i>19</i>
<i>Figure 24 WIRING DIAGRAM – same control and motor voltage, with ATD.....</i>	<i>20</i>
<i>Figure 25 WIRING DIAGRAM – Air, different control and motor voltage, w/o ATD.....</i>	<i>21</i>
<i>Figure 26 WIRING DIAGRAM – Air, same control and motor voltage, w/o ATD.....</i>	<i>22</i>
<i>Figure 27 WIRING DIAGRAM – Air, different control and motor voltage, with ATD.....</i>	<i>23</i>