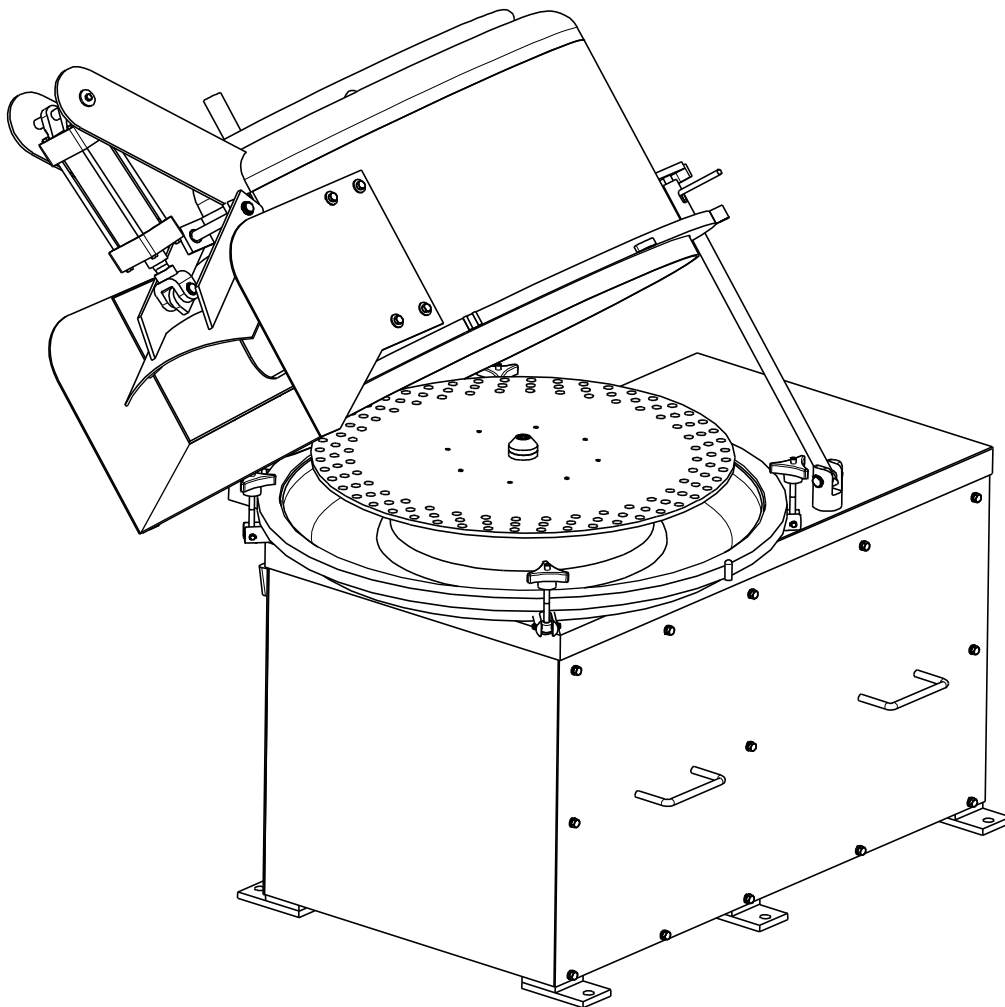


OPERATOR'S MANUAL [ENGLISH]:

OFFAL CLEANER
Tripe Washer and Refiner

INCLUDING: OPERATION, INSTRUCTION, INSTALLATION AND MAINTENANCE

IMPORTANT: READ THIS MANUAL CAREFULLY BEFORE INSTALLING, OPERATING OR SERVICING THIS TOOL.



TGP-32

KENTMASTER MFG. CO., INC. 1801 SOUTH MOUNTAIN AVE., MONROVIA, CALIFORNIA 91016 UNITED STATES OF AMERICA

☎ TELEPHONE: (818) 359-8888 FAX: (818) 303-5151

INDEX

[INDEX.....](#) [2](#)

[TOOL DATA.....](#) [3](#)

[PLACING INTO SERVICE.....](#) [4](#)

[OPERATING INSTRUCTIONS.....](#) [5](#)

[MAINTENANCE.....](#) [5](#)

[SERVICE.....](#) [5](#)

[TGP-32 MAIN ASSEMBLY - Figure 1.....](#) [6](#)

[TGP-32 BOM – Figure 2.....](#) [7](#)

[PROP ROD ASSEMBLY – Figure 3.....](#) [8](#)

[BEARING HOUSING ASSEMBLY – Figure 4.....](#) [9](#)

[CYLINDER ASSEMBLY, DISCHARGE DOOR – Figure 5.....](#) [10](#)

[CYLINDER ASSEMBLY, DOME LIFT – Figure 6.....](#) [11](#)

[BODY CLAMP ASSEMBLY– Figure 7.....](#) [12](#)

[NOTICE TO EMPLOYER AND PURCHASER OF TOOL.....](#) [13](#)

[Kentmaster Worldwide Location.....](#) [14](#)

TOOL DATA

MODEL: TGP-32
ASSEMBLY NO.: 1130000
TYPE: AIR AND ELECTRIC OPERATED

KENTMASTER MFG. INTRODUCES THE NEXT STEP IN OFFAL PROCESSING WITH THE TGP-32. THIS VERSATILE MACHINE IS CAPABLE OF SCALDING STOMACHS, WASHING CHITTERLINGS, REMOVING BLOOD CLOTS FROM WHOLE HEARTS AND VARIETY OF OTHER USES. THE TGP-32'S INNOVATIVE DESIGN ALLOWS IT TO DO THE JOB FASTER THAN ANY OTHER MACHINE ON THE MARKET TODAY. FASTER CYCLE TIMES TRANSLATE TO LESS WATER USAGE AND BETTER YIELDS.

FOR EXAMPLE, THE COMPLETE CYCLE FOR REMOVING BLOOD CLOTS FROM HEARTS IS LESS THAN THREE MINUTES, THIS INCLUDES LOADING AND UNLOADING THE MACHINE.

AT KENTMASTER, WE ALSO CONSIDERED THE EASE OF MAINTENANCE AND SANITATION TO BE MAJOR FACTOR IN THE DESIGN OF THE TGP-32. TO HELP SIMPLIFY THESE TASKS AND SPEED THE PRE-OP INSPECTION, WE DESIGNED THE DOME OF THE MACHINE TO PIVOT ON A PNEUMATIC CYLINDER. ALSO THE 7½ HP ELECTRIC MOTOR IS MOUNTED ON A HINGED PLATE FOR EASY ACCESSIBILITY.

KENTMASTER MFG.
INOVATION AND TECHNOLOGY FOR THE FUTURE OF THE MEAT
INDUSTRY

GENERAL INFORMATION

COVERING: SAFETY PRECAUTIONS AND PLACING INTO SERVICE

TGP-32

READ THIS MANUAL CAREFULLY BEFORE INSTALLING, OPERATING OR SERVICING THIS TOOL

IT IS THE RESPONSIBILITY OF THE EMPLOYER TO PLACE THIS INFORMATION INTO THE HANDS OF THE OPERATOR.

PLACING INTO SERVICE

 **WARNING**
WARNING

= Hazards or unsafe practices which could result in severe personal injury, death, or substantial property damage.

 **CAUTION**
CAUTION

= Hazards or unsafe practices which could result in minor personal injury, product, or property damage.

 **NOTICE**

= Important installation, operation or maintenance information.

 **WARNING**
WARNING

Installation, adjustment repair and maintenance of this tool must be made by trained and qualified personnel.

 **WARNING**
WARNING

Always disconnect power supply from tool before:
(A) Installing or removing parts from tool.
(B) Making repairs or adjustments to the tool.
(C) Performing maintenance or cleanup work.

 **WARNING**
WARNING

Do not operate this tool until you have received training in the handling, operation and use of this tool.

 **WARNING**
WARNING

Stop using a malfunctioning or defective tool immediately, report any problems or defects to your supervisor for removal of the tool from service.

 **WARNING**
WARNING

Never place your hand or any part of your body in the working area of the tool.

 **WARNING**
WARNING

Do not activate control switches of this tool unless you intend to test or operate this tool.

 **WARNING**
WARNING

Never make alterations or modifications to this tool.

 **WARNING**
WARNING

Disconnect power from the tool when tool is left unattended or not in use.

 **WARNING**
WARNING

OPERATING INSTRUCTIONS

1. BASIC PROCESS FOR CLEANING PRODUCTS

- LOAD SIZE: 140 – 160 LBS OF ANY PRODUCT
- WATER TEMPERATURE: varies due to product specifications
- TIME CYCLE: varies due to product specifications (hot rinse, scald temperature, cold rinse, cold water wash, second dry spin,)
- TOTAL TIME CYCLE, INCLUDING LOADING AND UNLOADING: varies due to product specifications

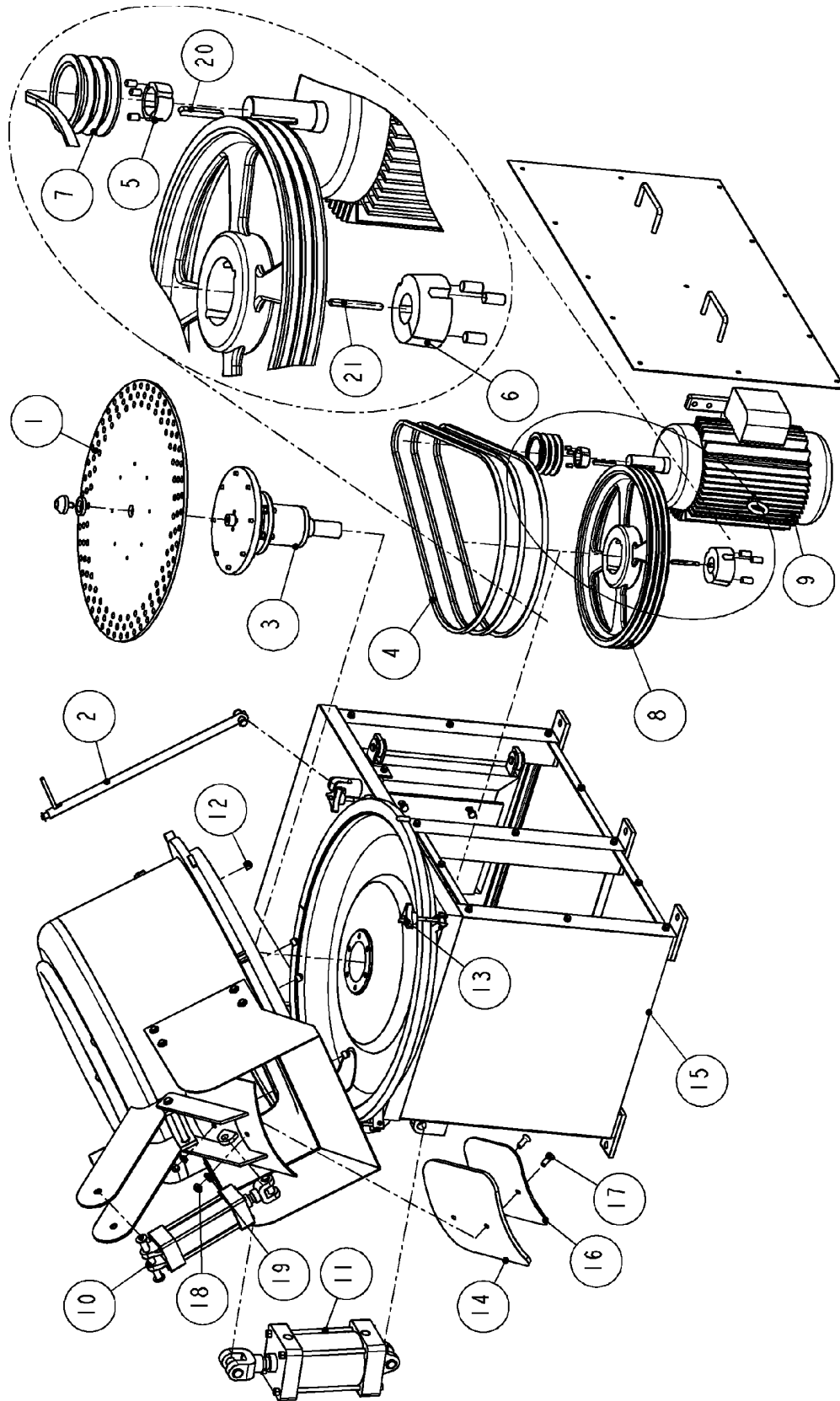
Please contact Kentmaster for formulas recommendation for your product.

MAINTENANCE

1. CHECK BELTS FOR TIGHTNESS AFTER THIRTY DAYS OF OPERATION.
2. CHECK BELTS EVERY 90 DAYS FOR TIGHTNESS AND SIGNS OF WEAR.
3. KEEP CYLINDERS LUBRICATED BY USING AN AIR OILER.
4. GREASE MOTOR BEARINGS AS REQUIRED BY PLANT MAINTENANCE SCHEDULES.

SERVICE

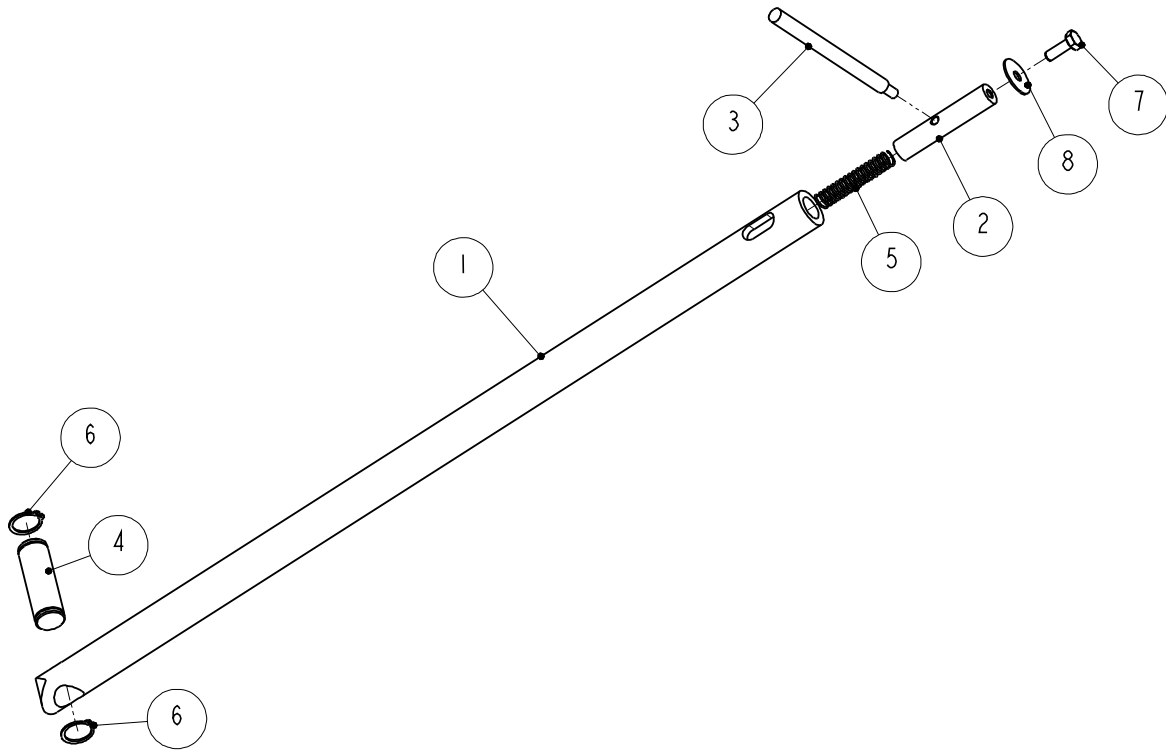
1. KEEP GOOD RECORDS OF ALL SERVICE ACTIVITY AND INCLUDE TOOL IN YOUR PREVENTIVE MAINTENANCE PROGRAM.
2. USE ONLY GENUINE KENTMASTER REPLACEMENT PARTS TO ASSURE PROPER PERFORMANCE OF TOOL.
3. CONTACT THE KENTMASTER SUPPLIER NEAREST YOU FOR PARTS AND CUSTOMER SERVICE INFORMATION.



TGP-32 MAIN ASSEMBLY - Figure 1

1130000: TG-32 OFFAL CLEANER			
ITEM	PART #	DESCRIPTION	QTY
1	1130046	WASHER PLATE ASSEMBLY, 3 HOLE RINGS	1
	1130049	WASHER PLATE ASSEMBLY, 6 HOLE RINGS	1
2	1130023	PROP ROD ASSEMBLY	1
3	1130025	BEARING HOUSING ASSEMBLY	1
4	1130029	V-BELT	3
5	1130030	BUSHING	1
6	1130031	BUSHING	1
7	1130032	SHEAVE, MOTOR SIDE	1
8	1130033	SHEAVE, DRUM	1
9	1130034	ELECTRIC MOTOR	1
10	1130035	CYLINDER ASSEMBLY, DISCHARGE DOOR	1
11	1130036	CYLINDER ASSEMBLY, DOME LIFT	1
12	1130050	NOZZLE, SPRAY	4
13	1130051	BODY CLAMP ASSEMBLY	4
14	1130056	DOOR GASKET	1
15	1131000	TG-32 WELDMENT ASSEMBLY	1
16	1131010	DOOR GASKET HOLDER	1
17	8248060	SCREW	2
18	8500200	NUT	2
19	8506180	WASHER	2
20	8607110	KEY	1
21	8607130	KEY	1

TGP-32 BOM – Figure 2

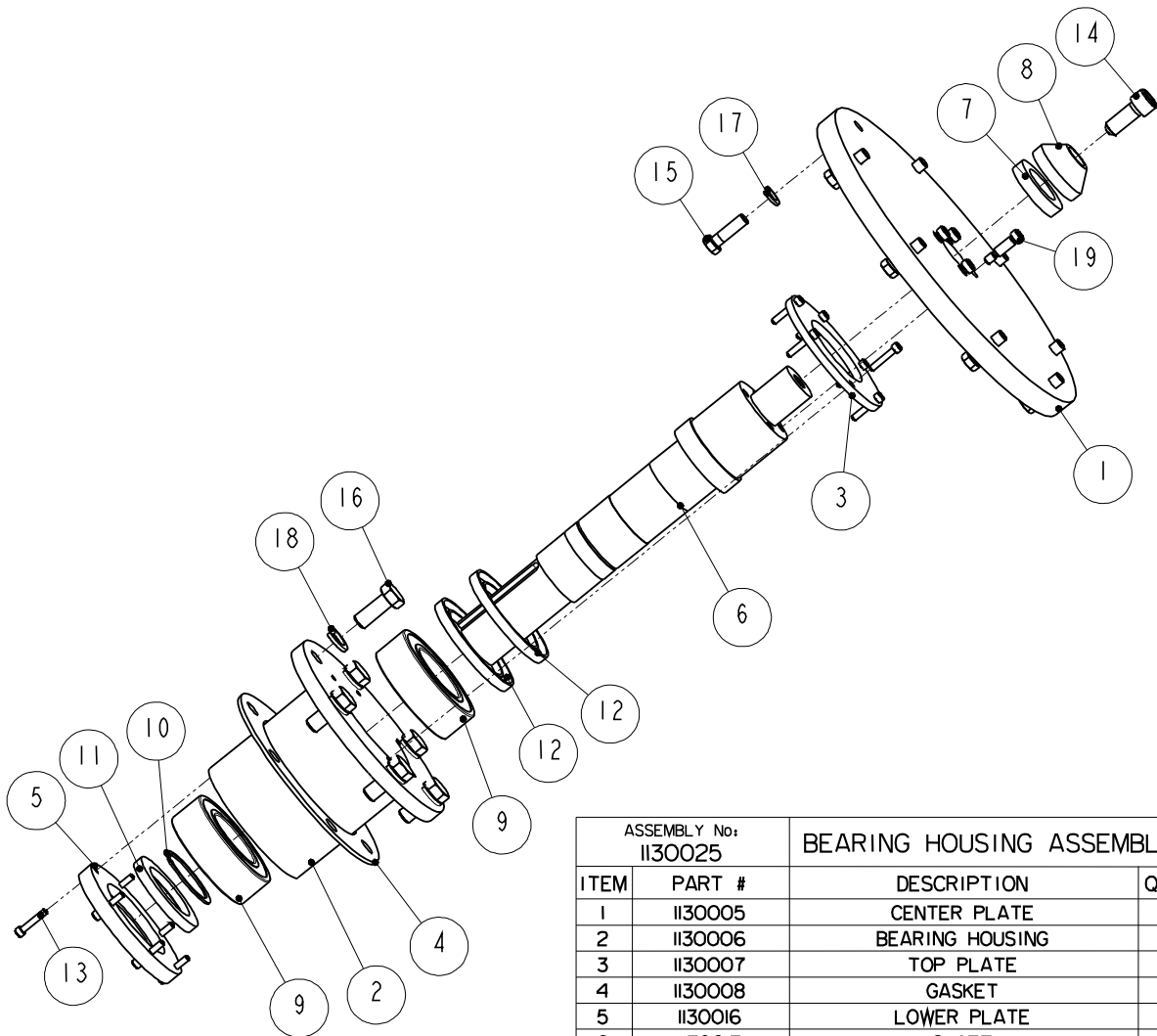


ASSEMBLY No: 1130023		PROP ROD ASSEMBLY	
ITEM	PART #	DESCRIPTION	QTY
1	1130018	ROD	1
2	1130019	SLIDE PIN	1
3	1130020	HANDLE	1
4	1130021	ROLL PIN	1
5	1130022	SPRING	1
6	5100750	RETAINING RING	2
7	8411060	SCREW	1
8	8550510	WASHER	1

PROP ROD ASSEMBLY – Figure 3

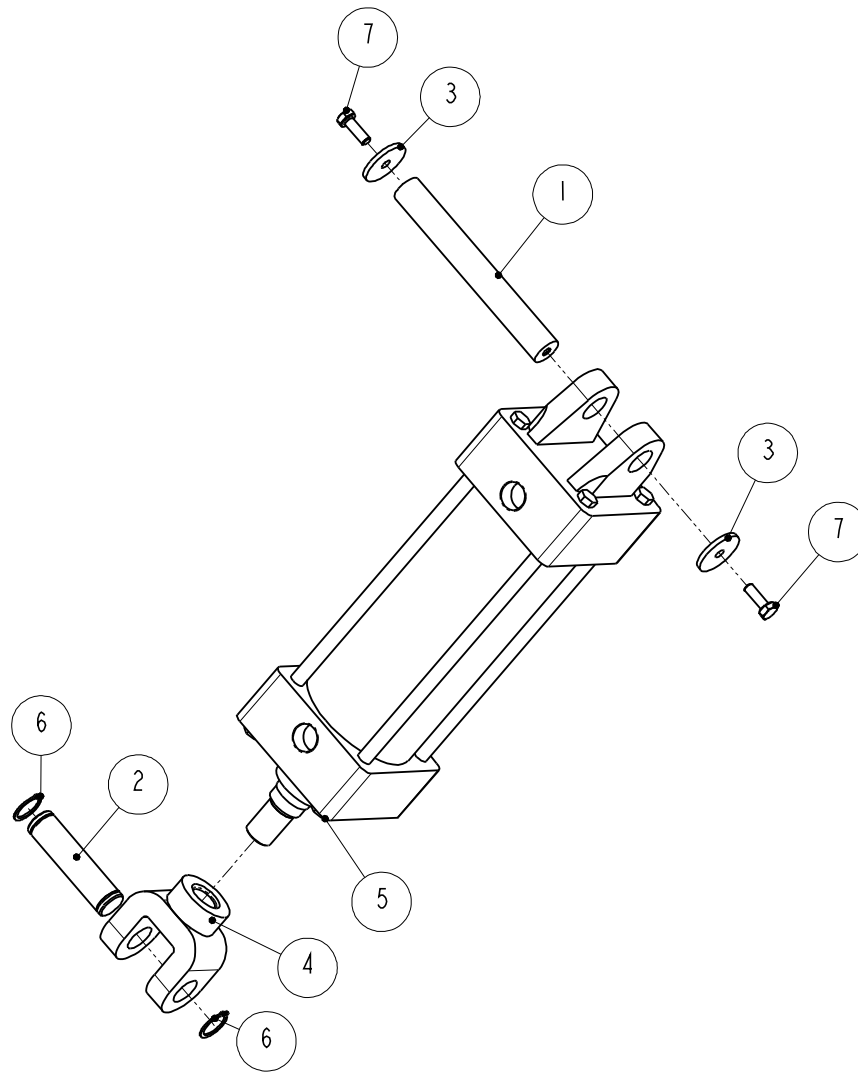
KENTMASTER MFG. CO., INC. 1801 SOUTH MOUNTAIN AVE., MONROVIA, CALIFORNIA 91016 UNITED STATES OF AMERICA

☎ TELEPHONE: (818) 359-8888 FAX: (818) 303-5151



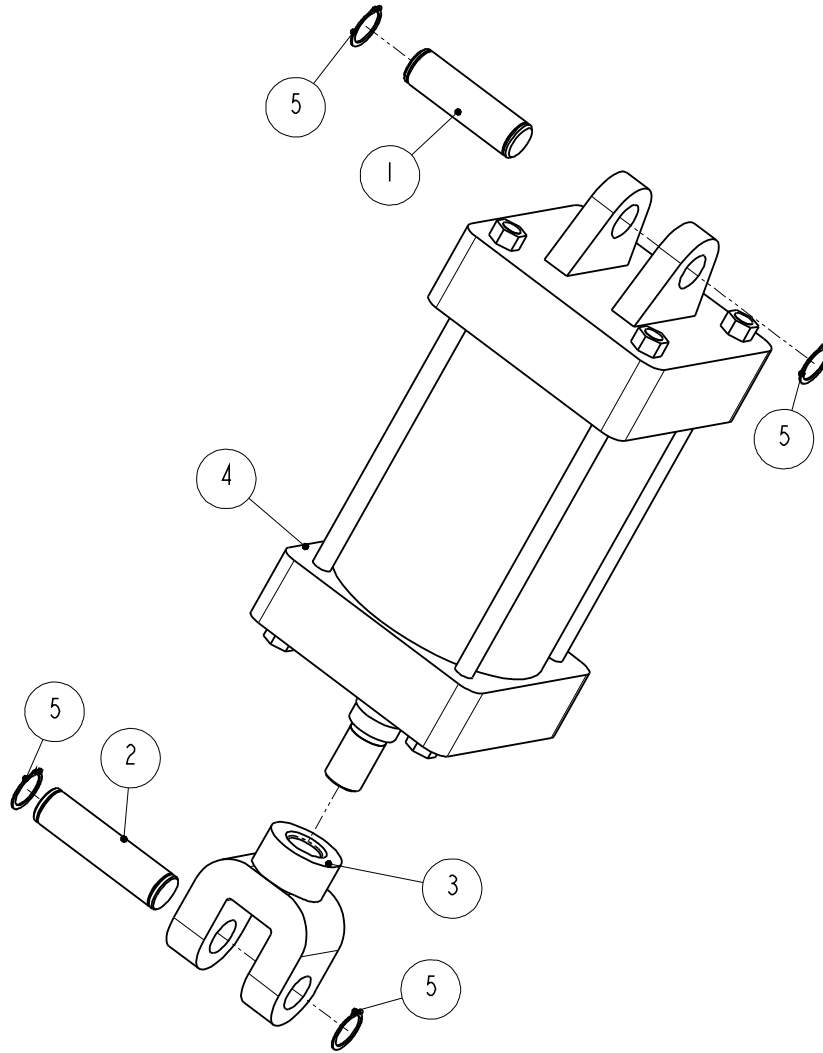
ASSEMBLY No: 1130025		BEARING HOUSING ASSEMBLY	
ITEM	PART #	DESCRIPTION	QTY
1	1130005	CENTER PLATE	1
2	1130006	BEARING HOUSING	1
3	1130007	TOP PLATE	1
4	1130008	GASKET	1
5	1130016	LOWER PLATE	1
6	1130017	SHAFT	1
7	1130026	SHAFT CAP SPACER	1
8	1130027	SHAFT CAP	1
9	3524100	BEARING	2
10	5101960	RETAINING RING	1
11	7798250	SEAL, SINGLE LIP	1
12	7798260	SEAL, SINGLE LIP	2
13	8209080	SCREW	12
14	8219100	SCREW	1
15	8415100	SCREW	8
16	8418100	SCREW	6
17	8506160	WASHER	8
18	8506180	WASHER	6
19	8870230	SCREW	4

BEARING HOUSING ASSEMBLY – Figure 4



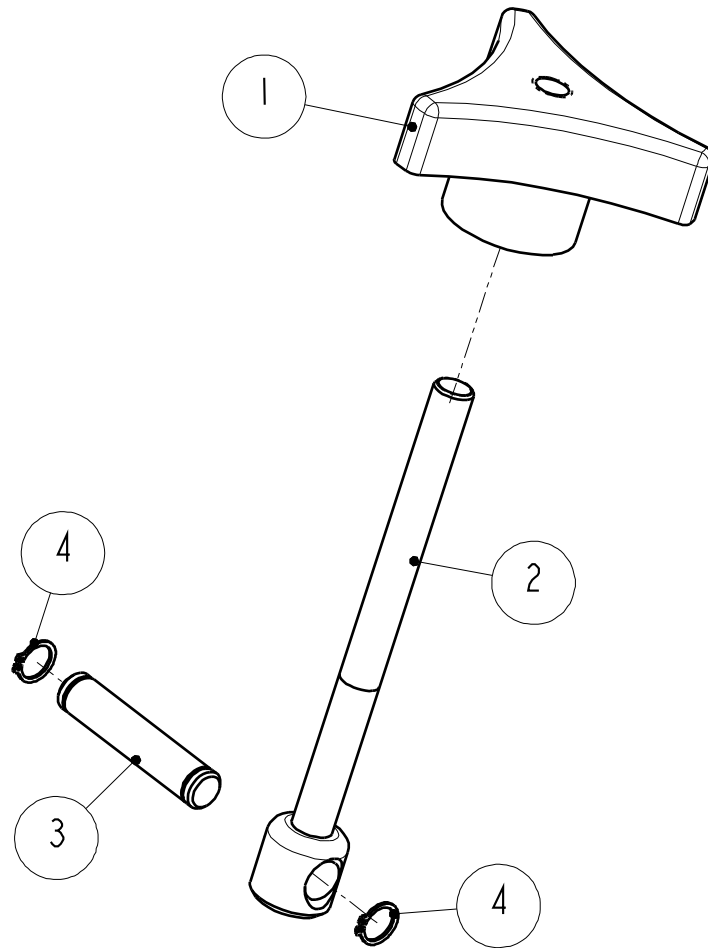
ASSEMBLY No: 1130035		CYLINDER ASSEMBLY, DISCHARGE DOOR	
ITEM	PART #	DESCRIPTION	QTY
1	1130037	PIN, CYLINDER	1
2	1130038	PIN, CYLINDER	1
3	1130039	WASHER	2
4	1130040	CLEVIS	1
5	1130041	CYLINDER	1
6	5100750	RETAINING RING	2
7	8411060	SCREW	2

CYLINDER ASSEMBLY, DISCHARGE DOOR – Figure 5



ASSEMBLY No: 1130036		CYLINDER ASSEMBLY, DOME LIFT	
ITEM	PART #	DESCRIPTION	QTY
1	1130042	PIN, CYLINDER	1
2	1130043	PIN, CYLINDER	1
3	1130044	CLEVIS	1
4	1130045	CYLINDER	1
5	5101000	RETAINING RING	4

CYLINDER ASSEMBLY, DOME LIFT – Figure 6



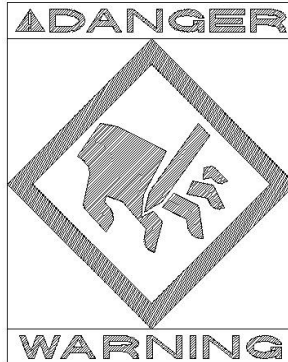
ASSEMBLY No: 1130051		BODY CLAMP ASSEMBLY	
ITEM	PART #	DESCRIPTION	QTY
1	1130028	KNOB	1
2	1130052	BODY CLAMP PIN	1
3	1130053	PIN	1
4	5100370	RETAINING RING	2

BODY CLAMP ASSEMBLY– Figure 7

NOTICE TO EMPLOYER AND PURCHASER OF TOOL

NOTICE TO SAFETY DIRECTOR

You have purchased a powerful tool that, if misused, can cause severe injury and harm to your employees. You must instruct your employees in the safe and proper use of this tool and to follow the safety procedures and instructions that have been supplied by the manufacturer of this tool. Please follow the following instructions.



1. Instruct tool operators to test the tool each day before using it to be sure it does not malfunction. Remove and repair any tool that malfunctions.
2. Instruct tool operators to immediately stop using a tool that malfunctions or is defective.
3. Instruct personnel to immediately remove all tools that malfunction. Be sure to disconnect tool from power supply.
4. Instruct all personnel to stay clear of tool, and not to stand or walk in front of, or next to tool when in use.
5. Point out to all personnel the dangers related to the misuse of tool and the importance of following safety procedures and instructions.
6. Do not make, or allow others to make, alterations or modifications to this tool. Replace all lost or illegible labels.
7. Follow all safety, installation and maintenance instructions provided with this tool. Establish proper safety procedures in accordance with local and national requirements to prevent accidental energizing of tool that can cause injuries.
8. If this tool is sold or change in ownership takes place, you must provide the new owner all safety instructions, notices and maintenance instructions you were originally provided. You can obtain additional copies of the instructions from Kentmaster, free of charge upon request.
9. Give copies of instructions to:
 - (A) Tool Operators**
 - (B) Maintenance Supervisor**
 - (C) Clean-up Supervisor**

KENTMASTER MFG. CO., INC. 1801 SOUTH MOUNTAIN AVE., MONROVIA, CALIFORNIA 91016 UNITED STATES OF AMERICA

☎ TELEPHONE: (818) 359-8888 FAX: (818) 303-5151

Kentmaster Worldwide Location

Kentmaster Equipment (Aust) PTY.LTD.
Unit 2,24 Central Court
Browns Plains Qld. 4118
Australia

Telephone: (07) 3806-8400
Fax: (07) 3806-7933
Australia@Kentmaster.com

Kentmaster do Brasil, Ltda.
Av. Dr. Joao Teodoro No. 805
Bairro De Vila Rezende
13405-240 Piracicaba, SP,
Brazil

Telephone #1: (019) 3 413 3113
Telephone #2: (019)983-4973
Fax: (019) 3 413 3113
Brazil@Kentmaster.com

Kentmaster (IRL) LTD.
Benamore, Dublin Road.
Roscrea,
CO, Tipperary,
Ireland

Telephone: (353) 0505-23292
Fax: (353) 0505-23299
Ireland@Kentmaster.com

Kentmaster Equipment (NZ) LTD.
5 Cooper Street
Havelock North
New Zealand

Telephone #1: (64) 6 8777 857
Telephone #2: 0800 KENTMASTER
Fax: (64) 6 8777 858
NewZealand@Kentmaster.com

Kentmaster South Africa (PTY) LTD.
Johannesburg - S. Africa
Unit 54 Sunnyrock Park
Sunrock Close, Germiston
South Africa

Telephone: (27) 11-455-3748
Fax: (27) 11-455-3749
SouthAfrica@Kentmaster.com

Kentmaster (UK) LTD.
Unit 16 Avonbank Ind. Centre
West Town Rd, Avonmouth-Bristol,
BS11 9DE
England

Telephone: (44) 117-923-5035
Fax: (44)-117-932-9010
UK@Kentmaster.com

Kentmaster Mfg. Co., Inc.
1801 South Mountain Ave.
Monrovia, CA, 91016
USA

Telephone #1: (626) 359-8888
Telephone #2: (800) 421-1477
Fax: (626) 303-5151
info@Kentmaster.com

Kentmaster Omaha
4417 South 139th Street
Omaha, NE, 68137
USA

Telephone #1: (402) 896-3355
Telephone #2: (800) 367-3181
Fax: (402) 896-3311
Omaha@Kentmaster.com