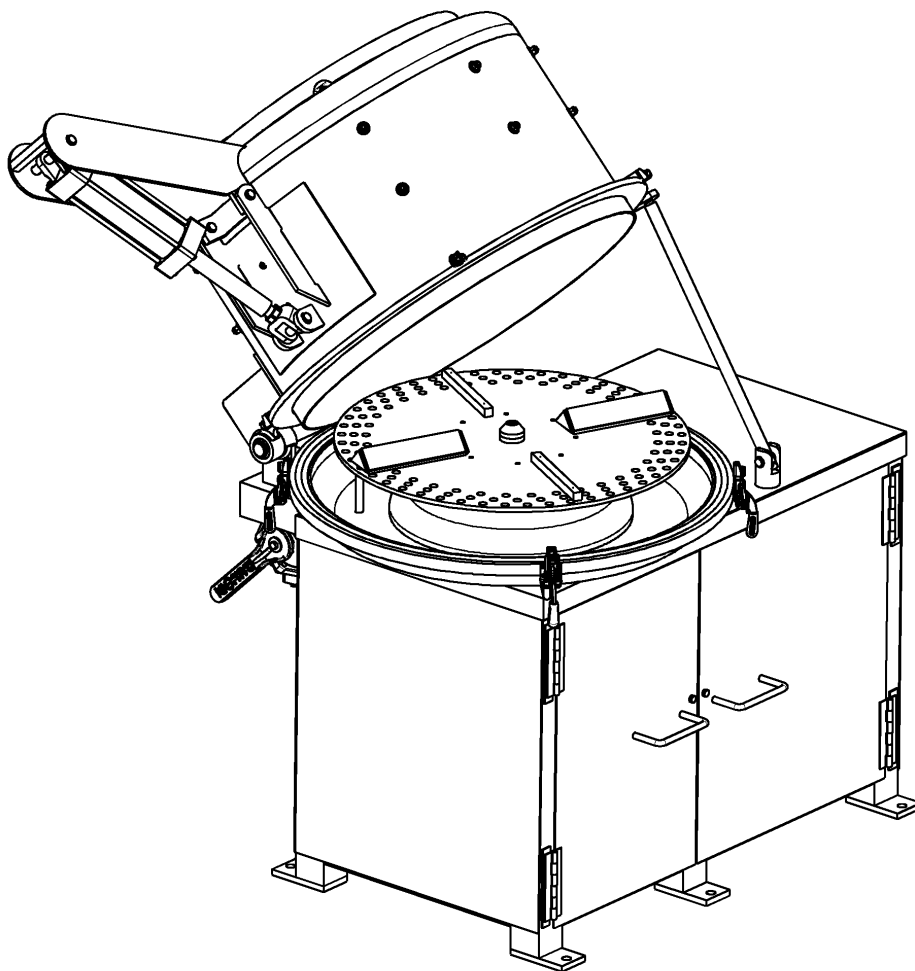


OPERATOR'S MANUAL [ENGLISH]:

OFFAL CLEANER
Tripe Washer and Refiner

INCLUDING: OPERATION, INSTRUCTION, INSTALLATION AND MAINTENANCE

IMPORTANT: READ THIS MANUAL CAREFULLY BEFORE INSTALLING, OPERATING OR SERVICING THIS TOOL.



TG-32

KENTMASTER MFG. CO., INC. 1801 SOUTH MOUNTAIN AVE., MONROVIA, CALIFORNIA 91016 UNITED STATES OF AMERICA

☎ TELEPHONE: (818) 359-8888 FAX: (818) 303-5151

INDEX

TOOL DATA..... 3
 PLACING INTO SERVICE 4
 INSTALLATION INSTRUCTIONS 5
 OPERATING INSTRUCTIONS 7
 MAINTENANCE 7
 SERVICE 7
 PIVOT SHAFTS AND BUSHINGS..... 16
 REPLACEMENT OF DOOR GASKET 18
 REPLACEMENT OF DOOM GASKET 19
 NOTICE TO EMPLOYER AND PURCHASER OF TOOL..... 20
 Kentmaster Worldwide Location 21

Figure 1: Dimensions 6
 Figure 2: TG-32 Main Assembly 8
 Figure 3: 1130000 – BOM 9
 Figure 4: Insert Options 10
 Figure 5: 1130046: Washer Plate 11
 Figure 6: 1130049: Refiner Plate 12
 Figure 7 : 1130025: Bearing Housing Assembly 13
 Figure 8 : 1130035: Cylinder, Discharge Door 14
 Figure 9 : 1130036: Cylinder, Dome Lift..... 15
 Figure 10: Pivot Shafts and Bushings 16
 Figure 11: Motor Mount Frame 17

TOOL DATA

MODEL: TG-32
ASSEMBLY NO.: 1130000
TYPE: AIR AND ELECTRIC OPERATED

KENTMASTER MFG. INTRODUCES THE NEXT STEP IN PORK OFFAL PROCESSING WITH THE TGP-32. THIS VERSATILE MACHINE IS CAPABLE OF SCALDING STOMACHS, WASHING PORK CHITTERLINGS, REMOVING BLOOD CLOTS FROM WHOLE HEARTS AND VARIETY OF OTHER USES. THE TGP-32'S INNOVATIVE DESIGN ALLOWS IT TO DO THE JOB FASTER THAN ANY OTHER MACHINE ON THE MARKET TODAY. FASTER CYCLE TIMES TRANSLATE TO LESS WATER USAGE AND BETTER YIELDS.

FOR EXAMPLE, THE COMPLETE CYCLE FOR REMOVING BLOOD CLOTS FROM HEARTS IS LESS THAN THREE MINUTES, THIS INCLUDES LOADING AND UNLOADING THE MACHINE.

AT KENTMASTER, WE ALSO CONSIDERED THE EASE OF MAINTENANCE AND SANITATION TO BE MAJOR FACTOR IN THE DESIGN OF THE, BUILT IN THE USA, TG-32 TO HELP SIMPLIFY THESE TASKS AND SPEED THE PRE-OP INSPECTION, WE DESIGNED THE DOME OF THE MACHINE TO PIVOT ON A PNEUMATIC CYLINDER. THE 7½ HP ELECTRIC MOTOR IS MOUNTED ON A HINGED PLATE FOR EASY ACCESSIBILITY.

KENTMASTER MFG.
INOVATION AND TECHNOLOGY FOR THE FUTURE OF THE MEAT INDUSTRY




GENERAL INFORMATION









COVERING: SAFETY PRECAUTIONS AND PLACING INTO SERVICE

TG-32**READ THIS MANUAL CAREFULLY BEFORE INSTALLING, OPERATING OR SERVICING THIS TOOL**

IT IS THE RESPONSIBILITY OF THE EMPLOYER TO PLACE THIS INFORMATION INTO THE HANDS OF THE OPERATOR.

PLACING INTO SERVICE

- | | |
|--|--|
|  WARNING | = Hazards or unsafe practices which could result in severe personal injury, death, or substantial property damage. |
|  CAUTION | = Hazards or unsafe practices which could result in minor personal injury, product, or property damage. |
|  NOTICE | = Important installation, operation or maintenance information. |

- | | |
|--|---|
|  WARNING | Installation, adjustment repair and maintenance of this tool must be made by trained and qualified personnel. |
|  WARNING | Always disconnect power supply from tool before:
(A) Installing or removing blades from tool.
(B) Making repairs or adjustments to the tool.
(C) Performing maintenance or cleanup work. |
|  WARNING | Do not operate this tool until you have received training in the handling, operation and use of this tool. |
|  WARNING | Stop using a malfunctioning or defective tool immediately, report any problems or defects to your supervisor for removal of the tool from service. |
|  WARNING | Never place your hand or any part of your body in the cutting path of the tool. |
|  WARNING | Do not activate control switches or triggers of this tool unless you intend to test or operate this tool. |
|  WARNING | Never make alterations or modifications to this tool. |
|  WARNING | Remove and disconnect power from the tool when tool is left unattended or not in use. |

INSTALLATION INSTRUCTIONS

LOCATION

Easy access from the Harvest area to the Offal processing area of the plant.

UTILITIES

3 phase power – voltage may vary by country.

70-90 psi (5-6 bar)

You should have an adequate amount of water supply of 25 GPM of 150 to 180 degree water.

You should have adequate drain size 3-4”.

There should be room for a separation table for the gut set.

You will need to dump the stomach contents, flush the inside and trim the outside before washing.

Area should be curbed to contain any mess.

INSTALLATION

Install the machine with the dome cylinders about 3 FEET from the wall so the dome can be lifted.

The machine should be attached to the floor.

The discharge door should be away from the separation area to avoid contamination.

The finished product should be discharged to an area that is considered for edible product.

A hose should be used to connect to the water ring on the top of the machine.

The air controls should be mounted to allow the operator to safely run the machine.

The safety prop rod should always be used when the dome is lifted.

OPERATION

Always make sure the area is clear when opening the dome.

Always use the safety prop rod.

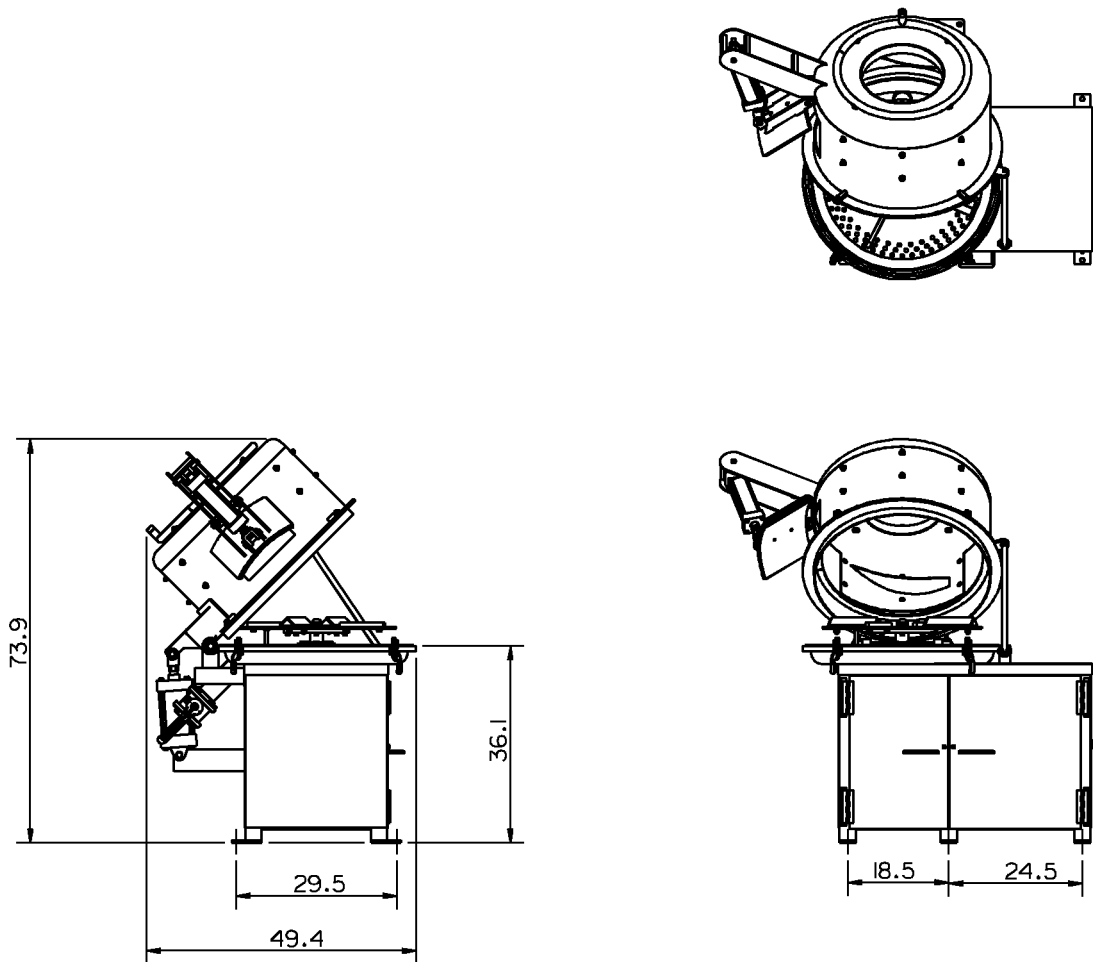
Always run the machine when adding products.

Always wear proper safety gear when using chemicals.

NEVER reach your hands or arms in the machine when it is running.

Machine capacity is about 150 pounds **DO NOT EXCEED.**

DIMENSIONS



Shown dimensions are in inches. 1" = 25.4mm

Figure 1: Dimensions

OPERATING INSTRUCTIONS

1. BASIC PROCESS FOR CLEANING PRODUCTS

- LOAD SIZE: 140 – 150 LBS OF ANY PRODUCT
- WATER TEMPERATURE: varies due to product specifications.
- TIME CYCLE: varies due to product specifications (hot rinse, scald temperature, cold rinse, cold water wash, second dry spin, ...)
- TOTAL TIME CYCLE, INCLUDING LOADING AND UNLOADING: varies due to product specifications.

Please contact Kentmaster for formulas recommendation for your product.

MAINTENANCE

1. CHECK BELTS FOR TIGHTNESS AFTER THIRTY DAYS OF OPERATION.
2. CHECK BELTS EVERY 90 DAYS FOR TIGHTNESS AND SIGNS OF WEAR.
3. KEEP CYLINDERS LUBRICATED BY USING AN IN LINE AIR OILER.
4. GREASE MOTOR BEARINGS AS REQUIRED BY PLANT MAINTENANCE SCHEDULES.

SERVICE

1. KEEP GOOD RECORDS OF ALL SERVICE ACTIVITY AND INCLUDE TOOL IN YOUR PREVENTIVE MAINTENANCE PROGRAM.
2. USE ONLY GENUINE KENTMASTER REPLACEMENT PARTS TO ASSURE PROPER PERFORMANCE OF TOOL.
3. CONTACT THE KENTMASTER SUPPLIER NEAREST YOU FOR PARTS AND CUSTOMER SERVICE INFORMATION.

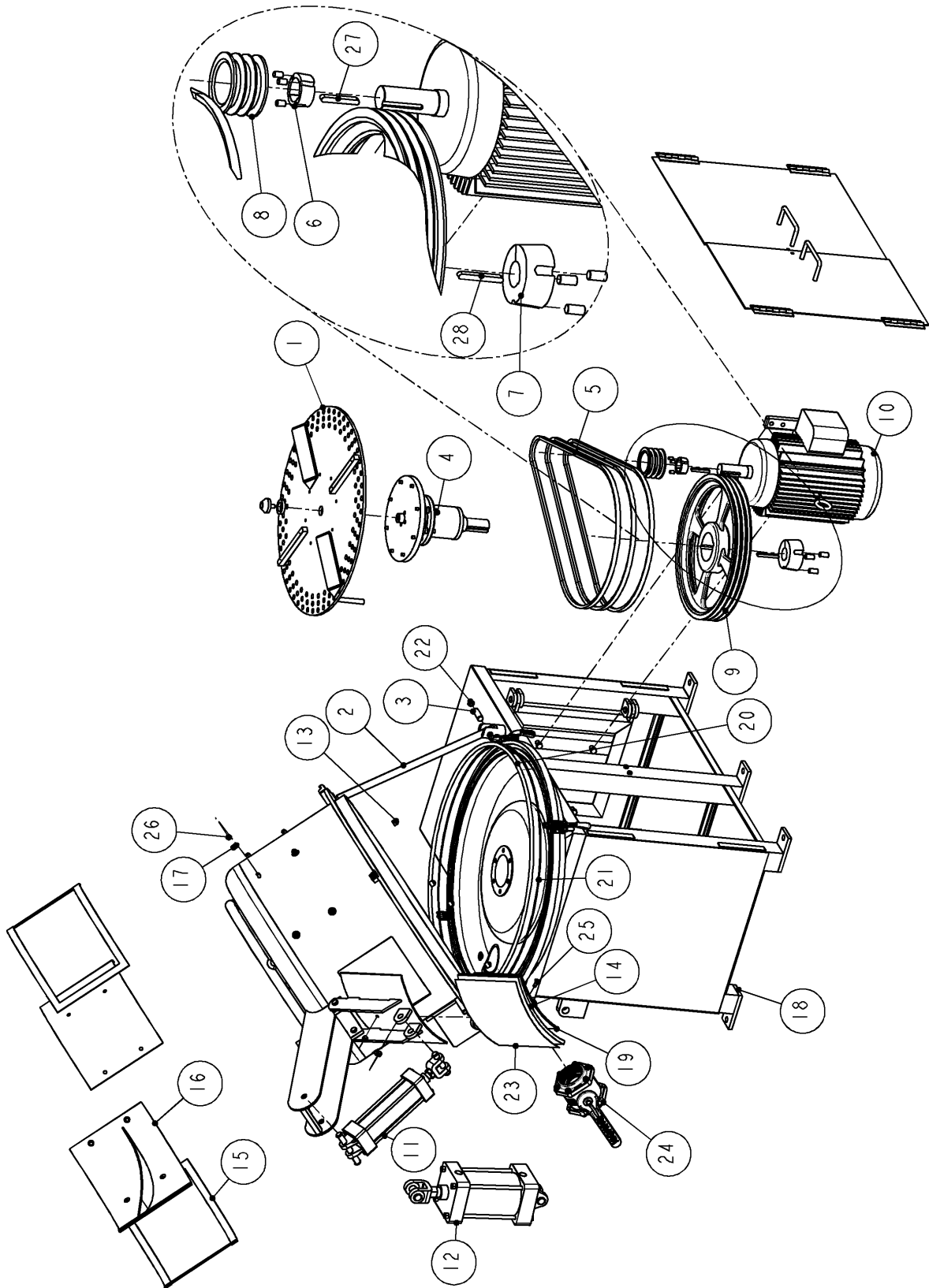


Figure 2: TG-32 Main Assembly

1130000: TG-32 OFFAL CLEANER WASHER / REFINER			
ITEM	PART #	DESCRIPTION	QTY
1	1130046	WASHER PLATE ASSEMBLY	1
1	1130049	REFINER PLATE ASSEMBLY	1
2	1130018	ROD	1
3	1130021	ROLL PIN	1
4	1130025	BEARING HOUSING ASSEMBLY	1
5	1130029	V-BELT	3
6	1130030	BUSHING	1
7	1130031	BUSHING	1
8	1130032	SHEAVE, MOTOR SIDE	1
9	1130033	SHEAVE, DRUM	1
10	1130034	ELECTRIC MOTOR	1
11	1130035	CYLINDER ASSEMBLY, DISCHARGE DOOR	1
12	1130036	CYLINDER ASSEMBLY, DOME LIFT	1
13	1130050	NOZZLE, SPRAY	4
14	1130056	DOOR GASKET	1
15	1130140	GASKET FOR INSERTS - TG-32	2
16	1130180	INSERT PLATE WITH BUFFLE - TG-32 (SEE OPTIONS)	2
17	1130250	SEALING WASHER	12
18	1131000	TG-32 WELDMENT ASSEMBLY	1
19	1131010	DOOR GASKET HOLDER	1
20	1131284	DOOR GASKET	1
21	1131285	GASKET GLUE	1
22	5161030	RETAINING RING	2
23	7400028	GASKET GLUE (FOR DOOR)	1
24	7804020	DISCHARGE VALVE	1
25	8245080	SCREW	14
26	8504150	NUT	14
27	8607110	KEY	1
28	8607130	KEY	1

Figure 3: 1130000 - BOM

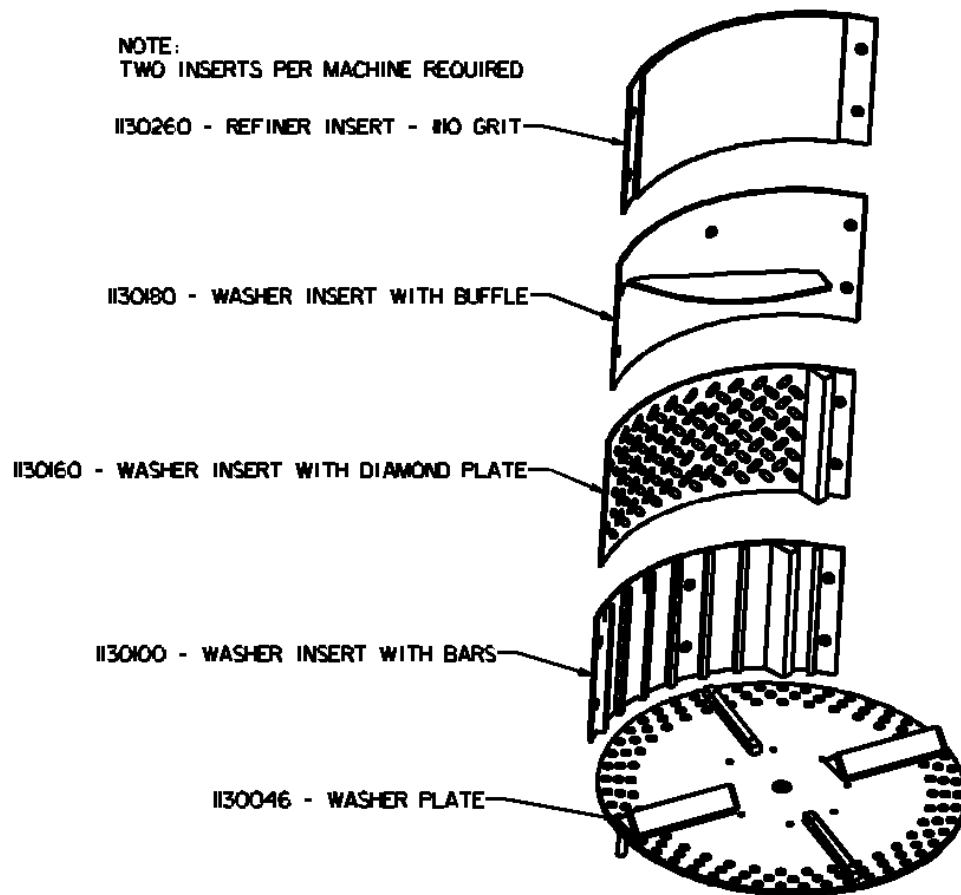
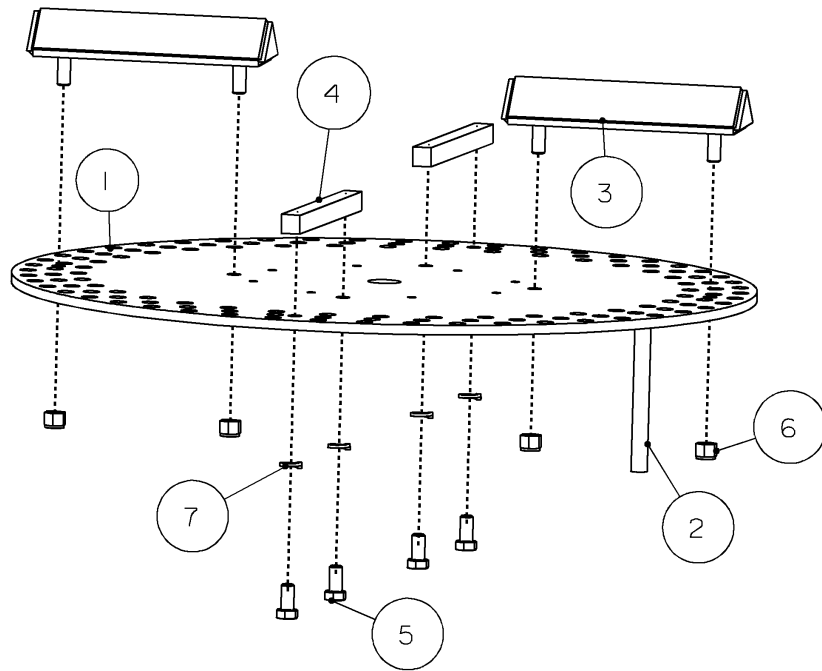


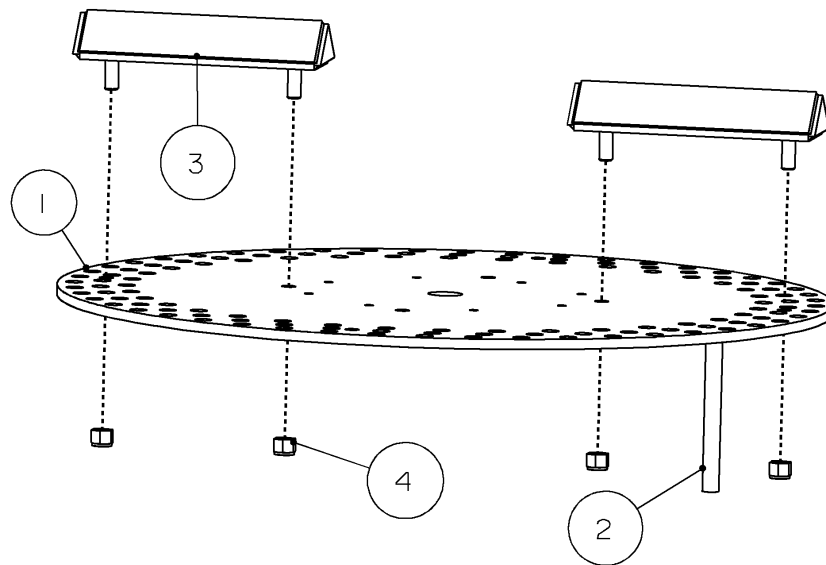
Figure 4: Insert Options



1130046: WASHER PLATE ASSEMBLY			
ITEM	PART #	DESCRIPTION	QTY
1	1130047	WASHER PLATE	1
2	1130048	STIR ROD	1
3	1130200	INSERT FOR TG-32 PLATE	2
4	1130240	BAR FOR WASHER PLATE - TG-32	2
5	8418080	SCREW	4
6	8504170	NUT	4
7	8506180	WASHER	4

There is a weld joint between Stir rod 1130048 and plate 1130047.

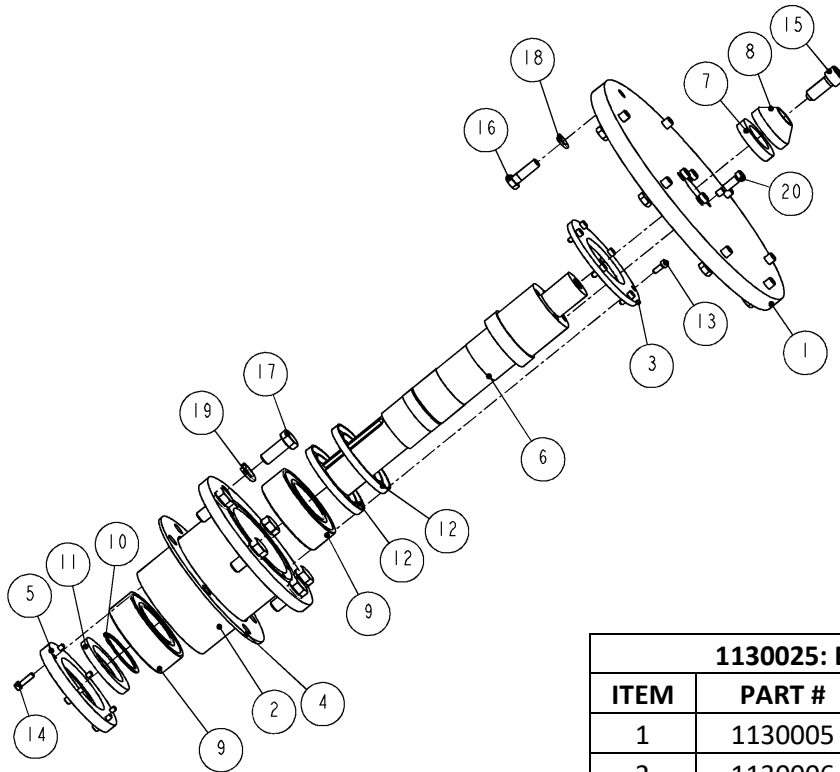
Figure 5: 1 130046: Washer Plate



1130049: REFINER PLATE ASSEMBLY			
ITEM	PART #	DESCRIPTION	QTY
1	1130047	WASHER PLATE	1
2	1130048	STIR ROD	1
3	1130200	INSERT FOR TG-32 PLATE	2
4	8504170	NUT	4

There is a weld joint between Stir rod 1130048 and plate 1130047.

Figure 6: 1 130049: Refiner Plate

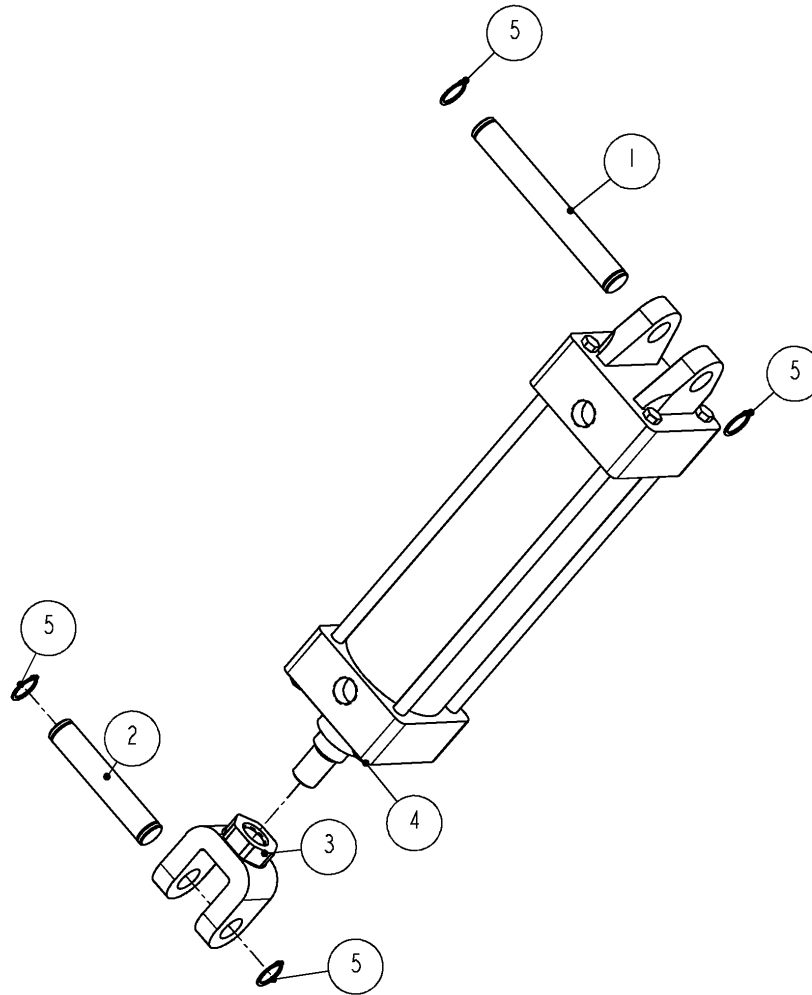


1130025: BEARING HOUSING ASSEMBLY			
ITEM	PART #	DESCRIPTION	QTY
1	1130005	CENTER PLATE	1
2	1130006	BEARING HOUSING	1
3	1130007	TOP PLATE	1
4	1130008	GASKET	1
5	1130016	LOWER PLATE	1
6	1130017	SHAFT	1
7	1130026	SHAFT CAP SPACER	1
8	1130027	SHAFT CAP	1
9	3524100	BEARING	2
10	5101960	RETAINING RING	1
11	7798250	SEAL, SINGLE LIP	1
12	7798260	SEAL, SINGLE LIP	2
13	8209040	SCREW	6
14	8209060	SCREW	6
15	8219100	SCREW	1
16	8415100	SCREW	8
17	8418100	SCREW	6
18	8506160	WASHER	8
19	8506180	WASHER	6
20	8870230	SCREW	4

For ordering purposes:

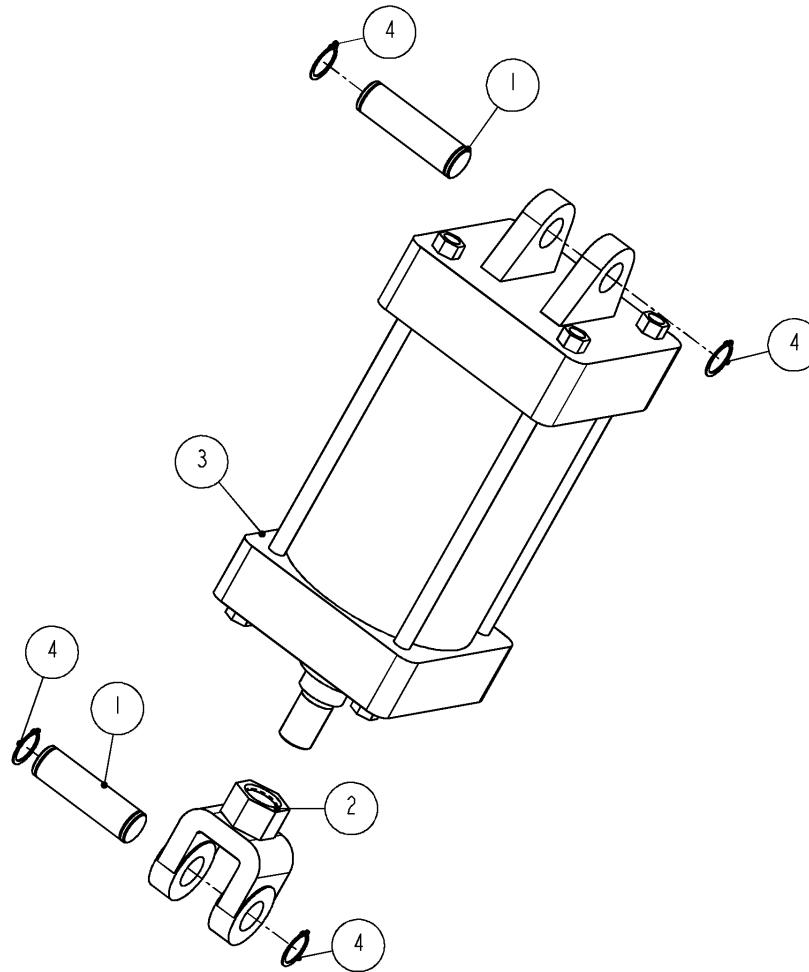
Bearing housing assembly without center plate (1130005) – order part number 1130060

Figure 7 : 1130025: Bearing Housing Assembly



1130035: CYLINDER ASSEMBLY, DISCHARGE DOOR			
ITEM	PART #	DESCRIPTION	QTY
1	1130037	PIN, CYLINDER	1
2	1130038	PIN, CYLINDER	1
3	1130040	CLEVIS	1
4	1130041	CYLINDER	1
5	5161030	RETAINING RING	4

Figure 8 : 1 130035: Cylinder, Discharge Door



1130036: CYLINDER ASSEMBLY, DOME LIFT			
ITEM	PART #	DESCRIPTION	QTY
1	1130043	PIN, CYLINDER	2
2	1130044	CLEVIS	1
3	1130045	CYLINDER	1
4	5161040	RETAINING RING	4

Figure 9 : 1 130036: Cylinder, Dome Lift

PIVOT SHAFTS AND BUSHINGS

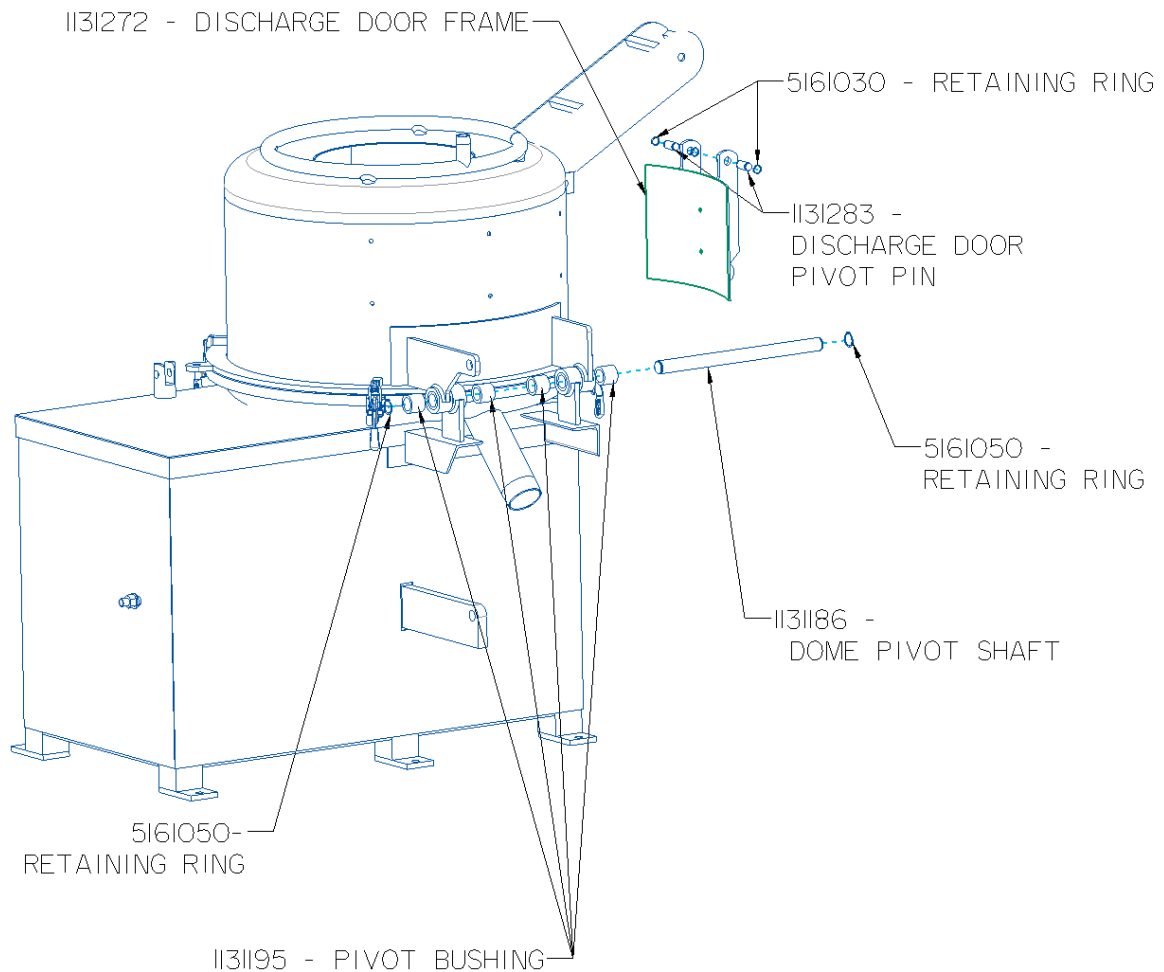
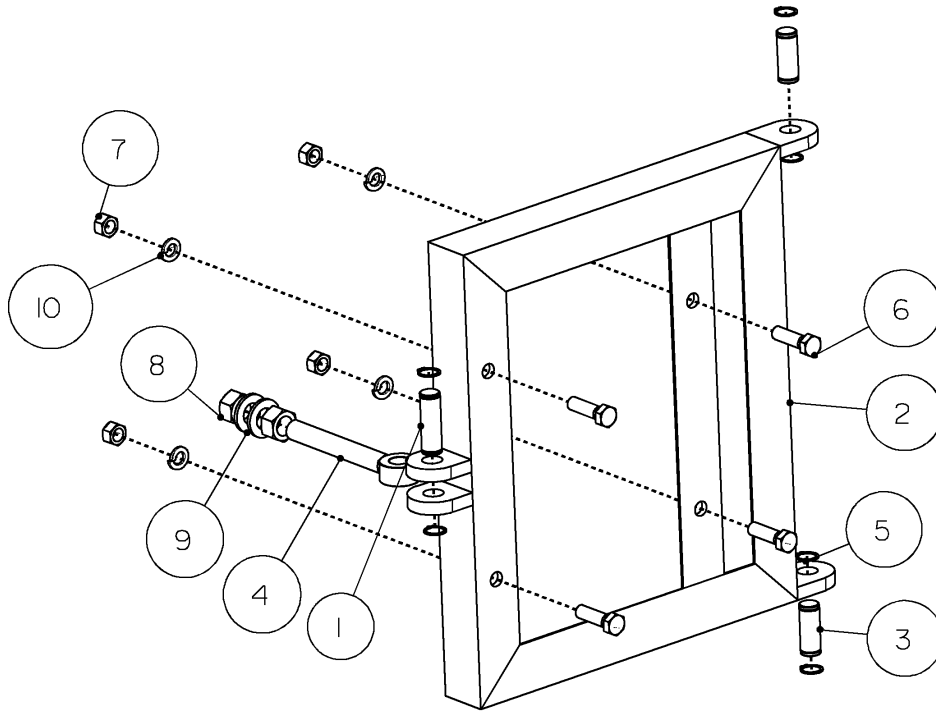
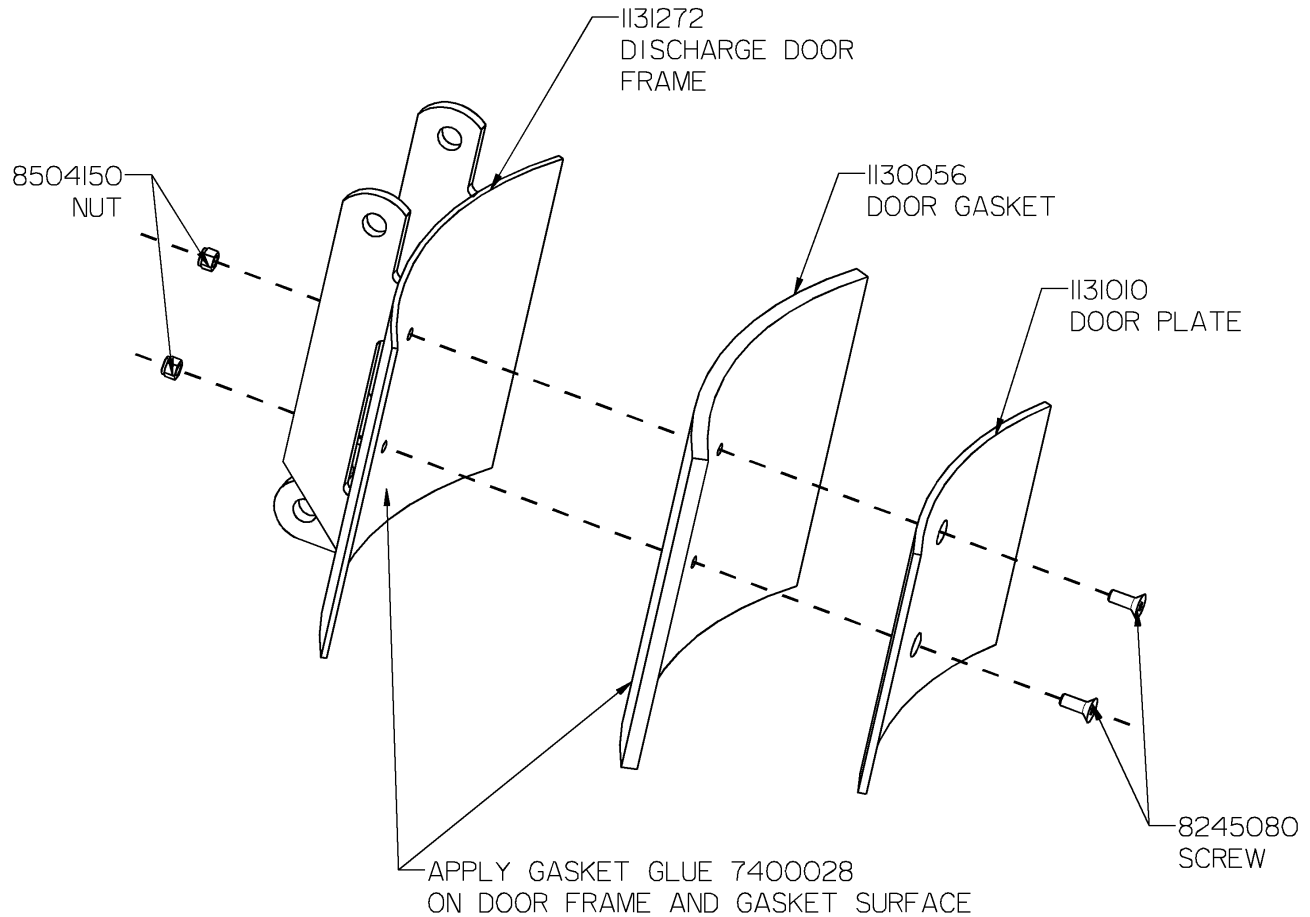


Figure 10: Pivot Shafts and Bushings



1131450 : MOTOR FRAME ASSEMBLY - TG-32			
ITEM	PART #	DESCRIPTION	QTY
1	1130021	ROLL PIN	1
2	1131390	MOTOR MOUNT FRAME	1
3	1131398	PIVOT PIN	2
4	1131440	ADJUSTMENT EYEBOLT	1
5	5161030	RETAINING RING	6
6	8418140	SCREW	4
7	8500200	NUT	4
8	8500270	NUT	2
9	8505220	WASHER	2
10	8506180	WASHER	4

Figure 1 1: Motor Mount Frame

REPLACEMENT OF DOOR GASKET

Remove the door from the machine.

The door is in three pieces (1131272 – Frame, 1130056- Gasket, 1131010 – Plate).

Loosen the bolts (8245080) and nuts (8504150) to separate the parts.

Remove the old gasket and clean the door surface.

Apply the door gasket glue (7400028) to the inner surface of the door (1131272).

Let set so glue is slightly tacky.

Apply glue (7400280) to the gasket (1130056).

Attach the gasket to the inner surface.

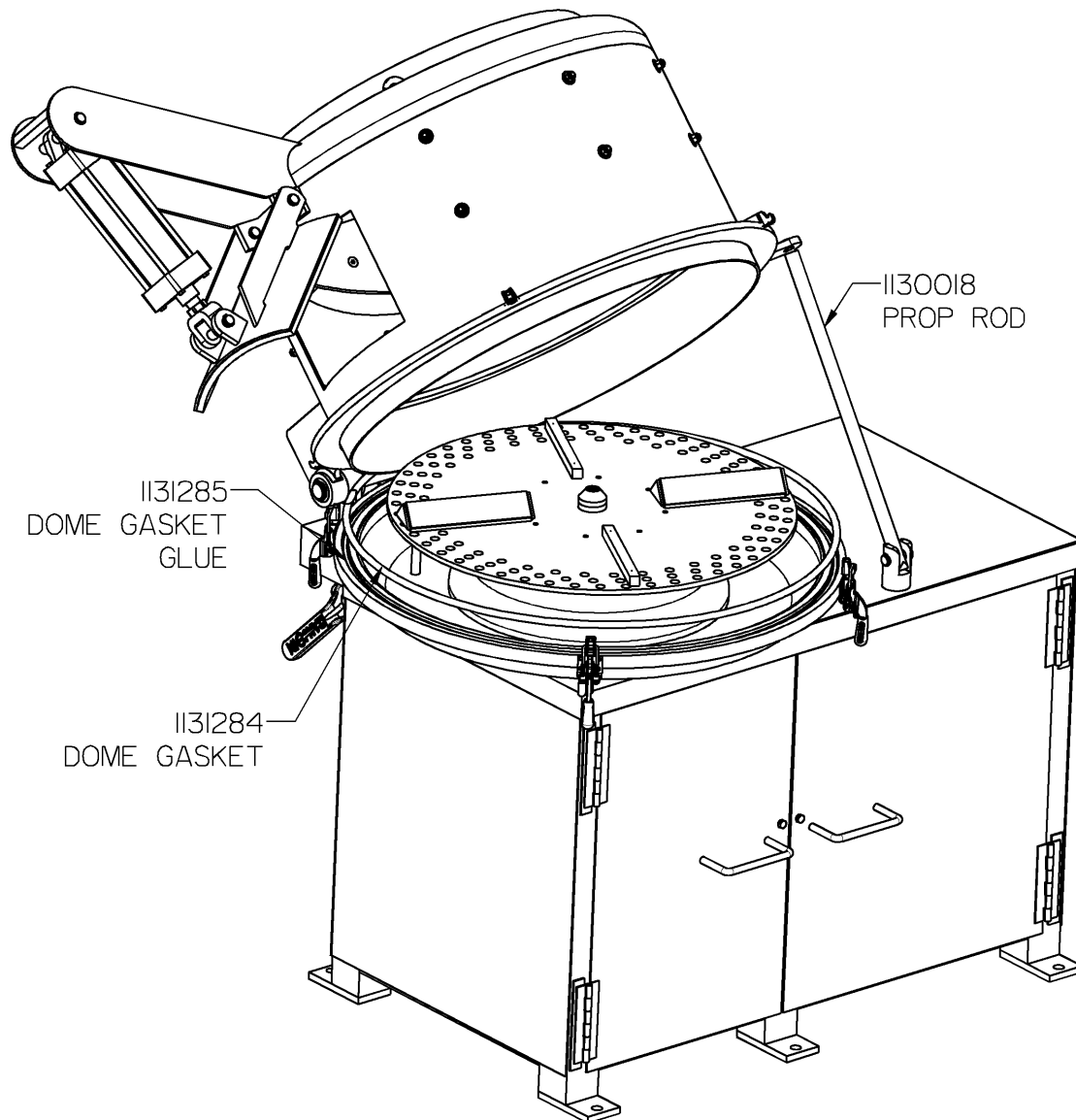
Re-assemble the parts.

Re-install the door on the machine.

Activate the cylinder to extend to close the door.

Leave closed to ensure the gasket is properly installed.

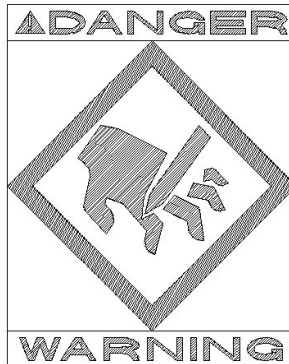
REPLACEMENT OF DOME GASKET



Open the Dome and install safety prop rod (1130018).
 Remove old gasket and clean gasket groove with wire brush.
 Apply gasket glue 1131285 in gasket groove.
 Install new gasket (1131284). Required length is 112". Kentmaster provides 10ft (120").
 Make sure the ends touch to ensure good seal.
 Lower Dome.

NOTICE TO EMPLOYER AND PURCHASER OF TOOL
NOTICE TO SAFETY DIRECTOR

You have purchased a powerful tool that, if misused, can cause severe injury and harm to your employees. You must instruct your employees in the safe and proper use of this tool and to follow the safety procedures and instructions that have been supplied by the manufacturer of this tool. Please follow the following instructions.



1. Instruct tool operators to test the tool each day before using it to be sure it does not malfunction. Remove and repair any tool that malfunctions.
2. Instruct tool operators to immediately stop using a tool that malfunctions or is defective.
3. Instruct personnel to immediately remove all tools that malfunction. Be sure to disconnect tool from power supply.
4. Instruct all personnel to stay clear of tool, and not to stand or walk in front of, or next to tool when in use.
5. Point out to all personnel the dangers related to the misuse of tool and the importance of following safety procedures and instructions.
6. Do not make, or allow others to make, alterations or modifications to this tool. Replace all lost or illegible labels.
7. Follow all safety, installation and maintenance instructions provided with this tool. Establish proper safety procedures in accordance with local and national requirements to prevent accidental energizing of tool that can cause injuries.
8. If this tool is sold or change in ownership takes place, you must provide the new owner all safety instructions, notices and maintenance instructions you were originally provided. You can obtain additional copies of the instructions from Kentmaster, free of charge upon request.
9. Give copies of instructions to: **(A) Tool Operators**
(B) Maintenance Supervisor

KENTMASTER MFG. CO., INC. 1801 SOUTH MOUNTAIN AVE., MONROVIA, CALIFORNIA 91016 UNITED STATES OF AMERICA
 ☎ TELEPHONE: (818) 359-8888 FAX: (818) 303-5151

(C) Clean-up Supervisor

Kentmaster Worldwide Location

Kentmaster Equipment (Aust) PTY.LTD.
Unit 2,24 Central Court
Browns Plains Qld. 4118
Australia

Telephone: (07) 3806-8400
Fax: (07) 3806-7933
Australia@Kentmaster.com

Kentmaster do Brasil, Ltda.
Av. Dr. Joao Teodoro No. 805
Bairro De Vila Rezende
13405-240 Piracicaba, SP,
Brazil

Telephone #1: (019) 3 413 3113
Telephone #2: (019)983-4973
Fax: (019) 3 413 3113
Brazil@Kentmaster.com

Kentmaster (IRL) LTD.
Benamore, Dublin Road.
Roscrea,
CO, Tipperary,
Ireland

Telephone: (353) 0505-23292
Fax: (353) 0505-23299
Ireland@Kentmaster.com

Kentmaster Equipment (NZ) LTD.
5 Cooper Street
Havelock North
New Zealand

Telephone #1: (64) 6 8777 857
Telephone #2: 0800 KENTMASTER
Fax: (64) 6 8777 858
NewZealand@Kentmaster.com

Kentmaster South Africa (PTY) LTD.
Johannesburg - S. Africa
Unit 54 Sunnyrock Park
Sunrock Close, Germiston
South Africa

Telephone: (27) 11-455-3748
Fax: (27) 11-455-3749
SouthAfrica@Kentmaster.com

Kentmaster (UK) LTD.
Unit 16 Avonbank Ind. Centre
West Town Rd, Avonmouth-Bristol,
BS11 9DE
England

Telephone: (44) 117-923-5035
Fax: (44)-117-932-9010
UK@Kentmaster.com

Kentmaster Mfg. Co., Inc.
1801 South Mountain Ave.
Monrovia, CA, 91016
USA

Telephone #1: (626) 359-8888
Telephone #2: (800) 421-1477
Fax: (626) 303-5151
info@Kentmaster.com

Kentmaster Omaha
4417 South 139th Street
Omaha, NE, 68137
USA

Telephone #1: (402) 896-3355
Telephone #2: (800) 367-3181
Fax: (402) 896-3311
Omaha@Kentmaster.com