

OPERATOR'S MANUAL

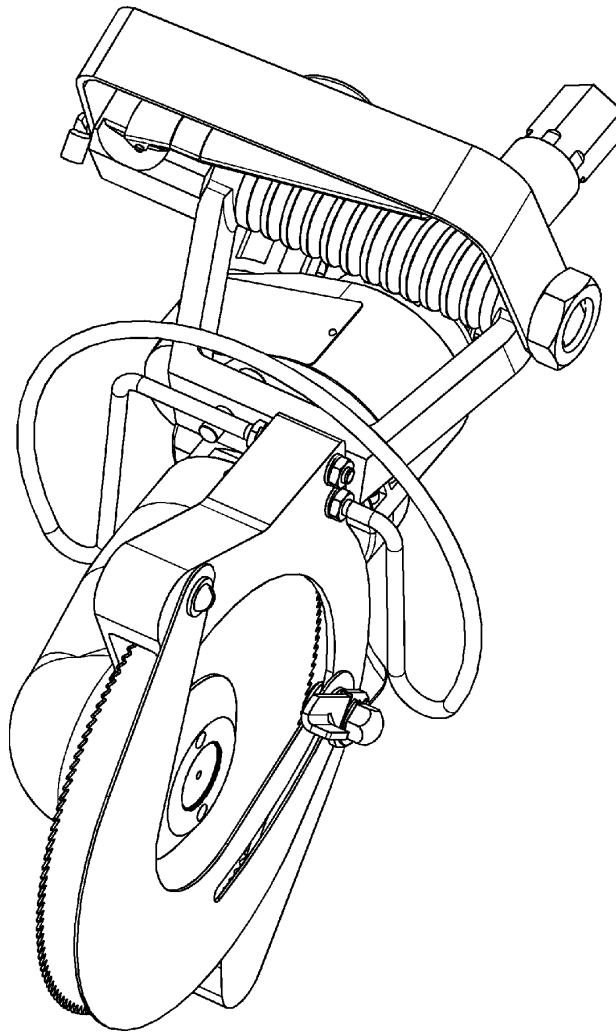
INCLUDING: OPERATION, INSTRUCTION, INSTALLATION, MAINTENANCE AND PARTSBOOK




**IMPORTANT: READ THIS MANUAL CAREFULLY BEFORE INSTALLING, OPERATING OR
SERVICING THIS TOOL.**

PNEUMATIC BREAKING SAW "SL-1100"
















TOOL DATA

MODEL: SL-1100
ASSEMBLY NO. 6320000
TYPE: AIR OPERATED
NET WEIGHT: 18 LBS (8.2 KG)
INLET AIR PRESSURE: 100 P.S.I. (6-7 BARS)



 WARNING	= Hazards or unsafe practices which could result in severe personal injury, death or substantial property damage.
 CAUTION	= Hazards or unsafe practices which could result in minor personal injury, product or property damage.
 NOTICE	= Important installation, operation or maintenance information.

OPERATING AND SAFETY INSTRUCTIONS

-  **WARNING** DO NOT OPERATE THIS TOOL UNTIL YOU HAVE READ AND UNDERSTOOD THE SAFETY INSTRUCTIONS AND OPERATING MANUALS.
-  **WARNING** DO NOT OPERATE THIS TOOL UNTIL YOU HAVE RECEIVED TRAINING IN THE HANDLING, OPERATION AND USE OF THIS TOOL.
-  **WARNING** STOP USING A MALFUNCTIONING OR DEFECTIVE TOOL IMMEDIATELY. REPORT ANY PROBLEMS OR DEFECTS TO YOUR SUPERVISOR FOR REMOVAL OF THE TOOL FROM SERVICE.
-  **WARNING** DO NOT ATTEMPT TO REPAIR THE TOOL YOURSELF.
-  **WARNING** DO NOT ALLOW UNAUTHORIZED PERSONS TO USE TOOL.
-  **WARNING** REMOVE AND DISCONNECT POWER FROM THE TOOL WHEN TOOL IS LEFT UNATTENDED OR IS NOT IN USE.
-  **WARNING** NEVER TIE DOWN, BYPASS, ALTER OR MODIFY THE ACTIVATING SWITCHES OR TRIGGERS OF THIS TOOL.
-  **WARNING** NEVER MAKE ALTERATIONS OR MODIFICATIONS TO THIS TOOL.
-  **WARNING** BE CONSTANTLY AWARE AND ALERT FOR UNSAFE CONDITIONS AND REPORT THEM IMMEDIATELY TO YOUR SUPERVISOR.
-  **WARNING** NEVER PLACE YOUR HAND OR ANY PART OF YOUR BODY IN THE CUTTING PATH OF THE TOOL.
-  **WARNING** NEVER ALLOW ANYONE ELSE TO PLACE THEIR HANDS OR ANY PART OF THEIR BODY IN THE CUTTING PATH OF THE TOOL.
-  **WARNING** DO NOT ACTIVATE CONTROL SWITCHES OR TRIGGERS OF THIS TOOL UNLESS YOU INTEND TO TEST OR OPERATE THIS TOOL.
-  **WARNING** DO NOT USE THIS TOOL FOR ANY PURPOSE OTHER THAN IT'S INTENDED PURPOSE.
-  **CAUTION** WHEN OPERATING THIS TOOL WEAR THE PROTECTIVE GEAR AND SAFETY EQUIPMENT SUPPLIED TO YOU.
-  **WARNING** THE NOISE EMISSION (SOUND PRESSURE LEVEL) AT THE WORKSTATION MAY EXCEED 80 dB (A). EAR AND SOUND PROTECTION GEAR IS REQUIRED.

OPERATING INSTRUCTIONS

⚠ WARNING ONLY TRAINED PERSONNEL ARE TO OPERATE THIS TOOL.

1. TO ENSURE TOOL IS OPERATING PROPERLY, PERFORM FOLLOWING STEPS AT START OF EACH SHIFT:
 - MAKE SURE TOOL MOVES UP AND DOWN FREELY WHILE HANGING FROM BALANCER OVERHEAD.
 - WITH POWER TO TOOL TURNED ON, TEST TRIGGER FOR PROPER OPERATION.
 - DEPRESS EACH TRIGGER SEPARATELY. TOOL SHOULD NOT ACTIVATE. DEPRESS BOTH TRIGGERS. TOOL SHOULD ACTIVATE.
 - IF TOOL HAS "ANTI-TIE DOWN" OPTION, BOTH TRIGGERS MUST BE DEPRESSED SIMULTANEOUSLY FOR TOOL TO ACTIVATE.
2. TO PERFORM WORK, HOLD TOOL FIRMLY AT BOTH HANDLES. SQUEEZE TRIGGERS TO ACTIVATE TOOL.
3. POSITION TOOL AND PERFORM CUTTING OPERATION.

MAINTENANCE

⚠ WARNING ONLY TRAINED AND QUALIFIED PERSONNEL ARE TO PERFORM MAINTENANCE AND SERVICE TO THIS TOOL.

THE COMPRESSED AIR DISTRIBUTION SYSTEM MUST BE LARGE ENOUGH TO SUPPLY AN ADEQUATE VOLUME OF CLEAN AND DRY COMPRESSED AIR TO THE TOOL.

1. MAKE ALL NECESSARY LINE CONNECTIONS TO THE TOOL.
2. AN AIR FILTER-REGULATOR-LUBRICATOR (PART NO. 7200030) MUST BE INSTALLED IN AIR SUPPLY FOR EACH TOOL.
3. FILL LUBRICATOR WITH KENTMASTER AIR MIST OIL (PART NO. 7903050). SET DRIP RATE ACCORDING TO INSTRUCTIONS SUPPLIED. TURN ADJUSTMENT ON SIGHT FEED DOME TO INCREASE/DECREASE OIL DELIVERY. MONITOR THE DEVICE BEING LUBRICATED AND READJUST IF NEEDED.
4. TOOL REQUIRES GREASING AT START OF EACH SHIFT. GREASE FOUR (4) LOCATIONS USING KENTMASTER GREASE GUN (PART NO. 4501470) AND GREASE (PART NO. 7903070).
5. TOOL REQUIRES 40 S.C.F.M. OF AIR @ 90 P.S.I. AIR PRESSURE.
6. FLUSH AIR MOTOR AT END OF EACH DAY'S USE BY SQUIRTING A FEW SQUIRTS OF KENTMASTER AIR OIL MIST (PART 7903050) DIRECTLY INTO THE AIR INLET PORT. RUN TOOL A FEW SECONDS TO COAT AND PROTECT THE AIR MOTOR AND INTERNAL PARTS OF TOOL.

BLADE REMOVAL AND CLEANING.

⚠ WARNING ALWAYS DISCONNECT POWER SUPPLY FROM TOOL BEFORE INSTALLING OR REMOVING BLADE FROM TOOL.

⚠ WARNING ALWAYS WEAR WIRE MESH GLOVES WHEN INSTALLING OR REMOVING BLADE FROM TOOL.

1. REMOVE COLLAR (ITEM NO. 2, FIG. NO. 1) USING WRENCH (ITEM NO.1).
2. REMOVE BLADE (ITEM NO. 3, FIG. NO. 1).
3. CLEAN ALL PARTS REMOVED WITH SOAP AND WATER.
4. SHARPEN OR REPLACE BLADES WHEN NECESSARY.
5. REASSEMBLE IN REVERSE ORDER.

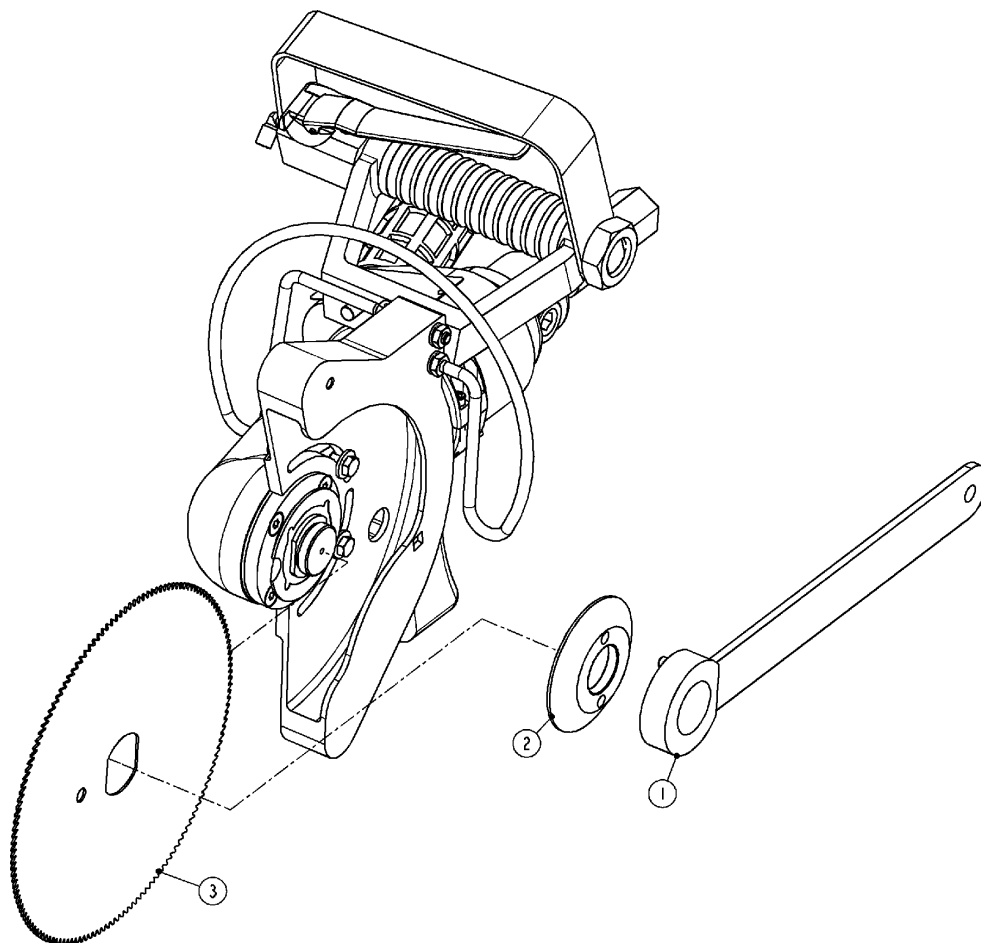
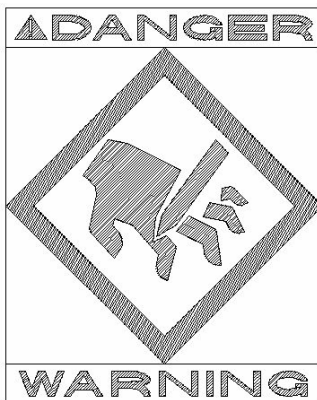


Figure 1 MODEL SL-1100 – BLADE REPLACEMENT

SERVICE

1. KEEP GOOD RECORDS OF ALL SERVICE ACTIVITY AND INCLUDE TOOL IN PREVENTIVE MAINTENANCE PROGRAM.
2. USE ONLY GENUINE KENTMASTER REPLACEMENT PARTS TO ASSURE PROPER PERFORMANCE OF TOOL.
3. CONTACT THE KENTMASTER SUPPLIER NEAREST YOU FOR PARTS AND CUSTOMER SERVICE INFORMATION.



PARTS BOOK

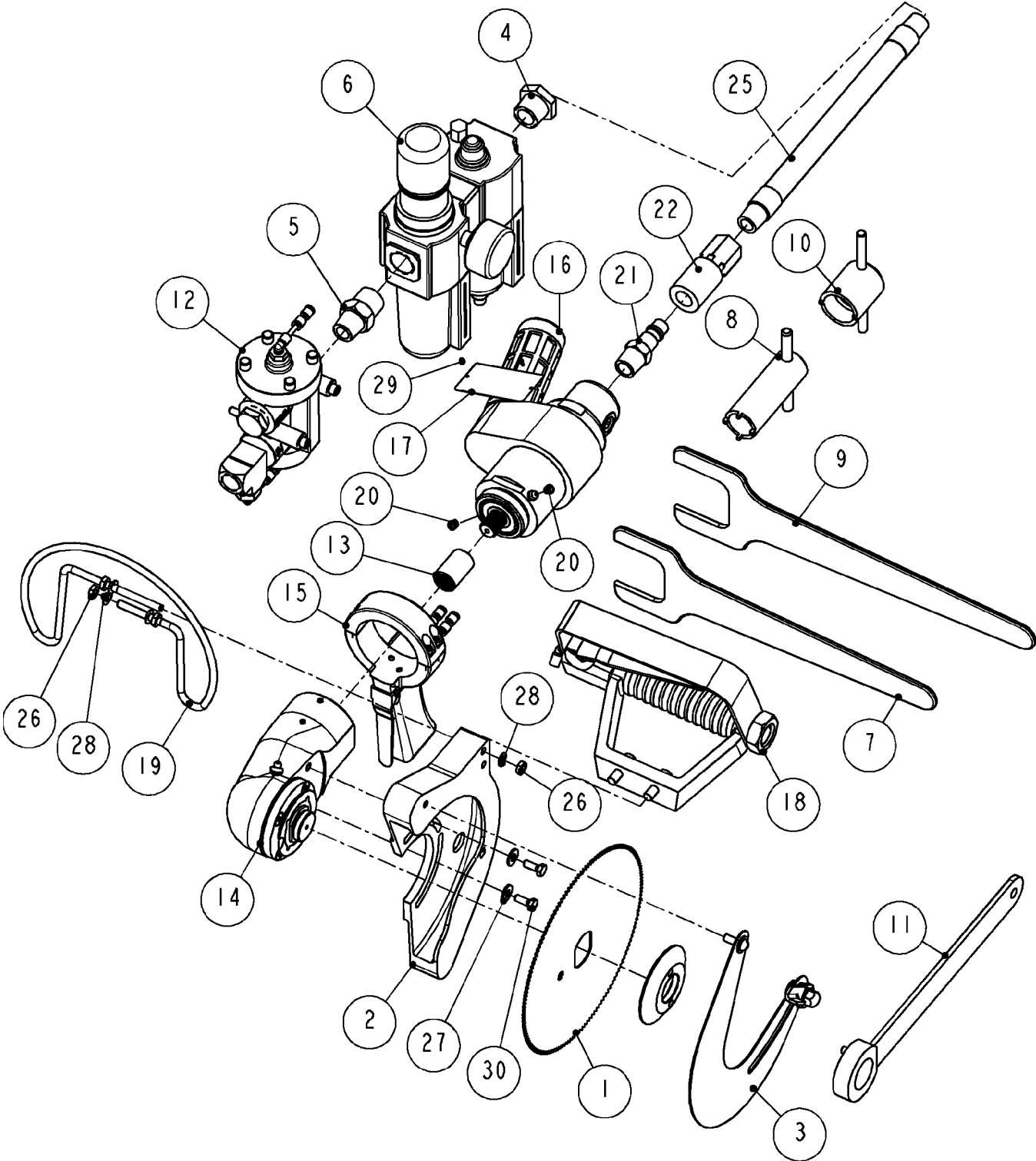


Figure 2 MODEL "SL-1100" – MAIN ASSEMBLY

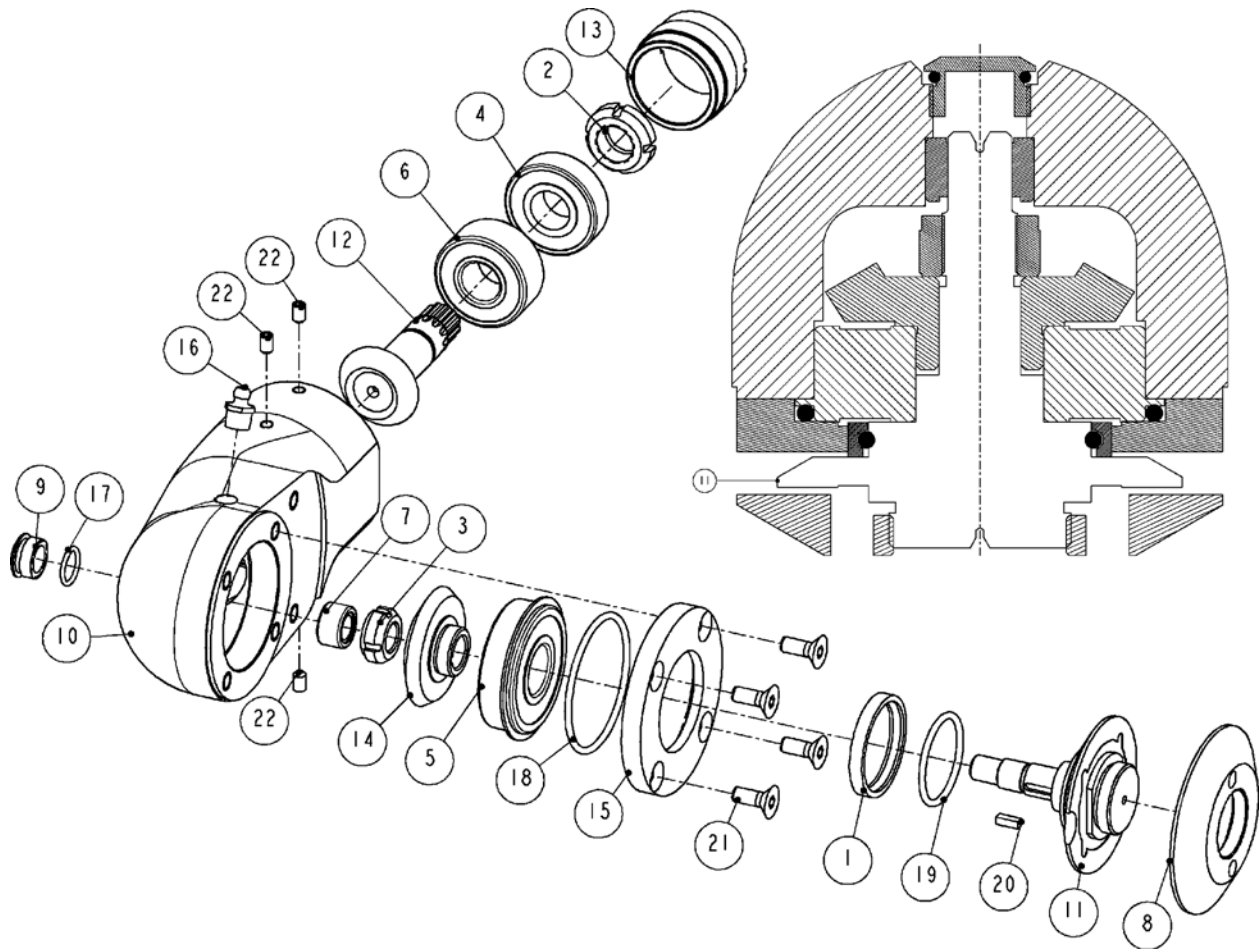
6320000: PNEUMATIC BREAKING SAW, SL-1100			
ITEM	PART #	DESCRIPTION	QTY
1	4000230	8" BLADE, 150 TEETH	1
	4000310	8" BLADE, SKIP TOOTH, 74 TEETH	1
	4000110	9" BLADE, 240 TEETH, THIN RIM	1
	4000200	9" BLADE, 120 TEETH	1
	4000060	10" BLADE, 220 TEETH	1
	4000320	10" BLADE, DOUBLE SKIP TOOTH, 40 TEETH	1
	4000080	11" BLADE, 240 TEETH	1
	4000350	11" BLADE, THIN RIM, 90 TEETH	1
	4000520	12" BLADE, 240 TEETH	1
2	6623260	8" GUARD	1
	6623200	9" & 10" GUARD	1
	6623270	11" & 12" GUARD	1
3	6001191	DEPTH GAUGE FOR 8" BLADE - OPTIONAL	1
	6001190	DEPTH GAUGE, 9" & 10" BLADE - OPTIONAL	1
4	7002450	BUSHING - OPTIONAL	1
5	7002680	ADAPTER - OPTIONAL	1
6	7200030	REGULATOR/FILTER/LUBRICATOR - OPTIONAL	1
7	4501300	WRENCH- AIRMOTOR, GEAR CASE - OPTIONAL	1
8	4501320	SPANNER WRENCH AND HANDLE - OPTIONAL	1
9	4501390	WRENCH- AIRMOTOR HOUSING - OPTIONAL	1
10	4501850	TOOL, PACKING NUT - OPTIONAL	1
11	4501610	WRENCH	1
12	6001605	POPPET VALVE ASSEMBLY	1
13	6320140	COUPLING	1
14	6320170	GEAR NOSE ASSEMBLY	1
15	6320180	PISTOL HANDLE ASSEMBLY	1
16	6330150	AIR MOTOR ASSEMBLY	1
17	6541380	NAME PLATE	1
18	6551340	AIR HANDLE, FRONT	1
19	6623380	HANGER	1
20	7014040	FITTING	2
21	7034060	MALE QUICK CONNECT	1
22	7034260	FEMALE SOCKET	1
23	7300780	AIR TUBING - RED, 20FT	1
24	7300790	AIR TUBING - GREEN, 20FT	1
25	7310040	AIR HOSE	1
26	8500110	NUT	4
27	8505100	WASHER	2
28	8506100	WASHER	4
29	8640130	DRIVE SCREW	2
30	9411050	SCREW	2

MODEL "SL-1100" WITH TWO TRIGGERS (FRONT HANDLE #6551340) REQUIRES POPPET VALVE (#6001605). AN AIR FILTER-REGULATOR-LUBRICATOR (#7200030) MUST BE INSTALLED IN AIR SUPPLY FOR EACH TOOL.

Figure 3 BOM FOR MODEL "SL-1100"

KENTMASTER MFG. CO., INC. 1801 SOUTH MOUNTAIN AVE., MONROVIA, CALIFORNIA 91016 UNITED STATES OF AMERICA
 ☎ TELEPHONE: (626) 359-8888 FAX: (626) 303-5151

GEAR-NOSE ASSEMBLY



6320170: GEAR NOSE ASSEMBLY							
ITEM	PART #	DESCRIPTION	QTY	ITEM	PART #	DESCRIPTION	QTY
1	1301620	RING	1	12	6623130	BEVEL PINION	1
2	3001110	LOCK NUT	1	13	6623190	RETAINER	1
3	3001120	BEARING LOCKNUT	1	14	6623230	BEVEL GEAR	1
4	3204030	BEARING	1	15	6623300	FLANGE	1
5	3314040	BEARING	1	16	7018200	LUBE FITTING	1
6	3524030	BEARING	1	17	7680140	O-RING	1
7	3705320	BEARING	1	18	7681370	O-RING	1
8	6003180	NUT - BLADE	1	19	7701250	O-RING	1
9	6300770	VALVE PLUG	1	20	8602020	SQUARE KEY	1
10	6320150	NOSE	1	21	9241050	SCREW	4
11	6620250	MANDREL - R.H.	1	22	9311030	SET SCREW	3

Figure 4 GEAR-NOSE ASSEMBLY

GEAR HOUSING DISASSEMBLY

1. REMOVE (2) RETAINER NUTS, ITEMS 2 & 13 (FIGURE 4).
2. FROM REAR OF NOSE, ITEM 10, PRESS OUT SHAFT, ITEM 12, AND BEARINGS, ITEMS 4 & 6.
3. FROM FRONT FACE OF NOSE, ITEM 10, REMOVE (4) SCREWS, ITEM 21.
4. FROM REAR SIDE OF NOSE, ITEM 10, REMOVE PLUG, ITEM 9.
5. PRESS OUT MANDREL, ITEM 11, WITH PINION, ITEM 14.

GEAR HOUSING REASSEMBLY

1. CLEAN AND LUBRICATE ALL PARTS PRIOR TO REASSEMBLY.
2. REASSEMBLE PARTS IN REVERSE ORDER.

HANDLES

REAR HANDLE

6320180: PISTOL HANDLE ASSEMBLY, REAR HANDLE			
ITEM	PART #	DESCRIPTION	QTY
1	6300770	VALVE PLUG	1
2	6302430	LEVER	1
3	6320120	HANDLE	1
4	6320130	BRACKET, HANDLE	1
5	6600360	VALVE STEM	1
6	7036030	FITTING	2
7	7037860	UNION	2
8	7300710	RED AIR TUBE	1
9	7300720	GREEN AIR TUBE	1
10	7680080	O-RING	1
11	7680140	O-RING	1
12	8209080	SCREW	4
13	8620080	PIN	1
14	8890010	SPRING	1

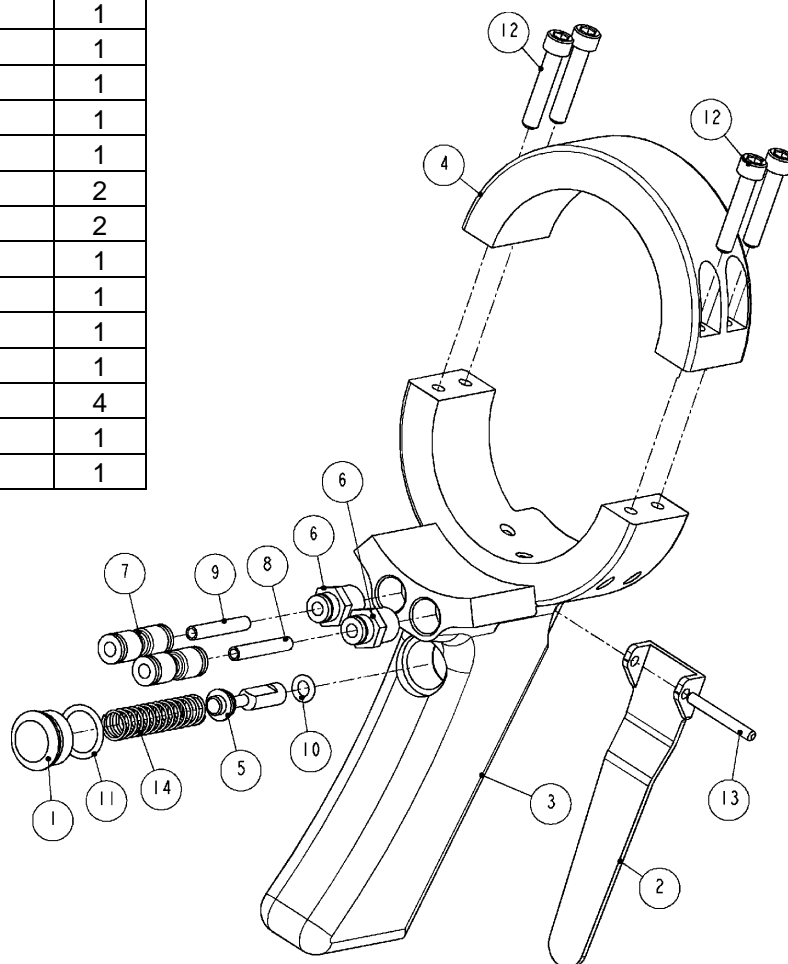
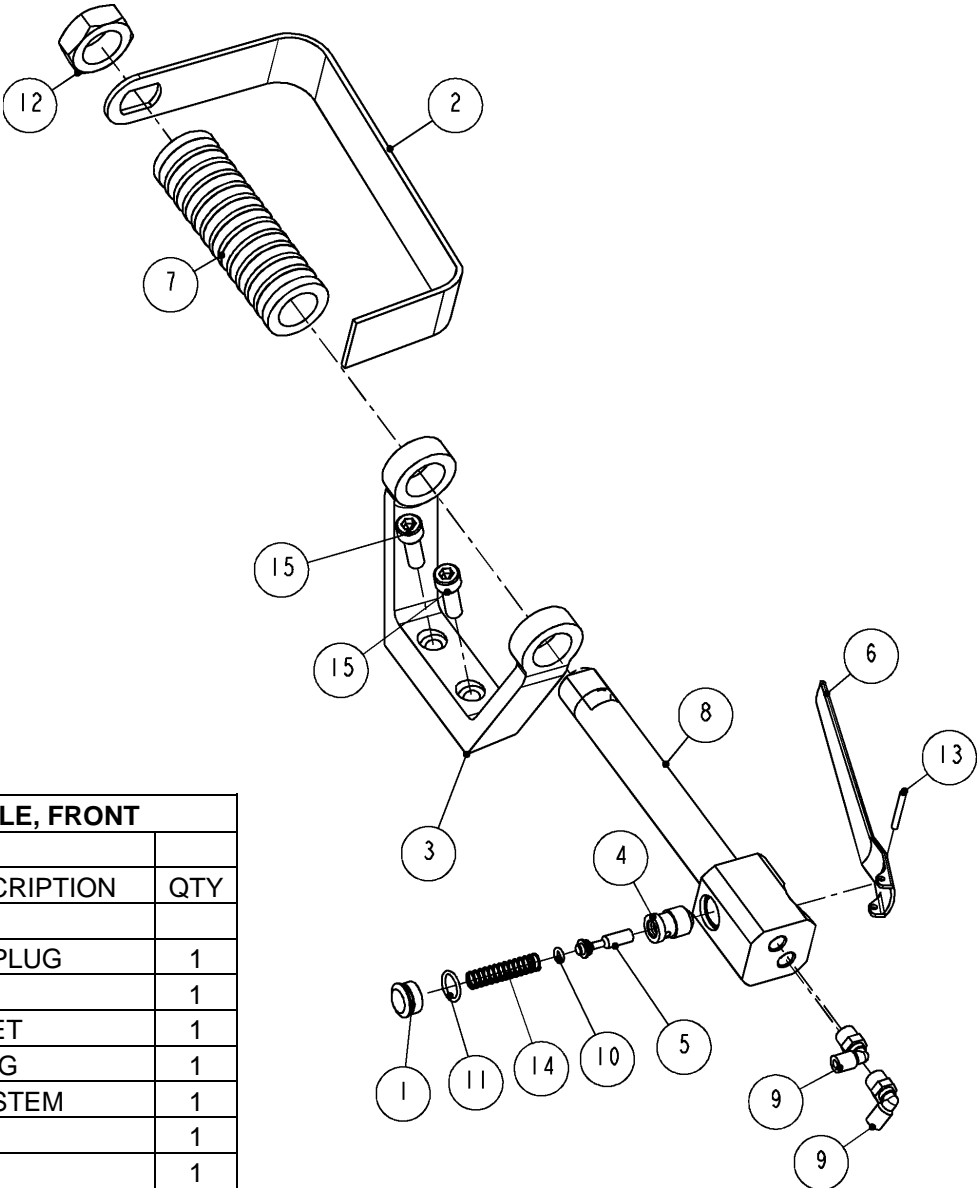


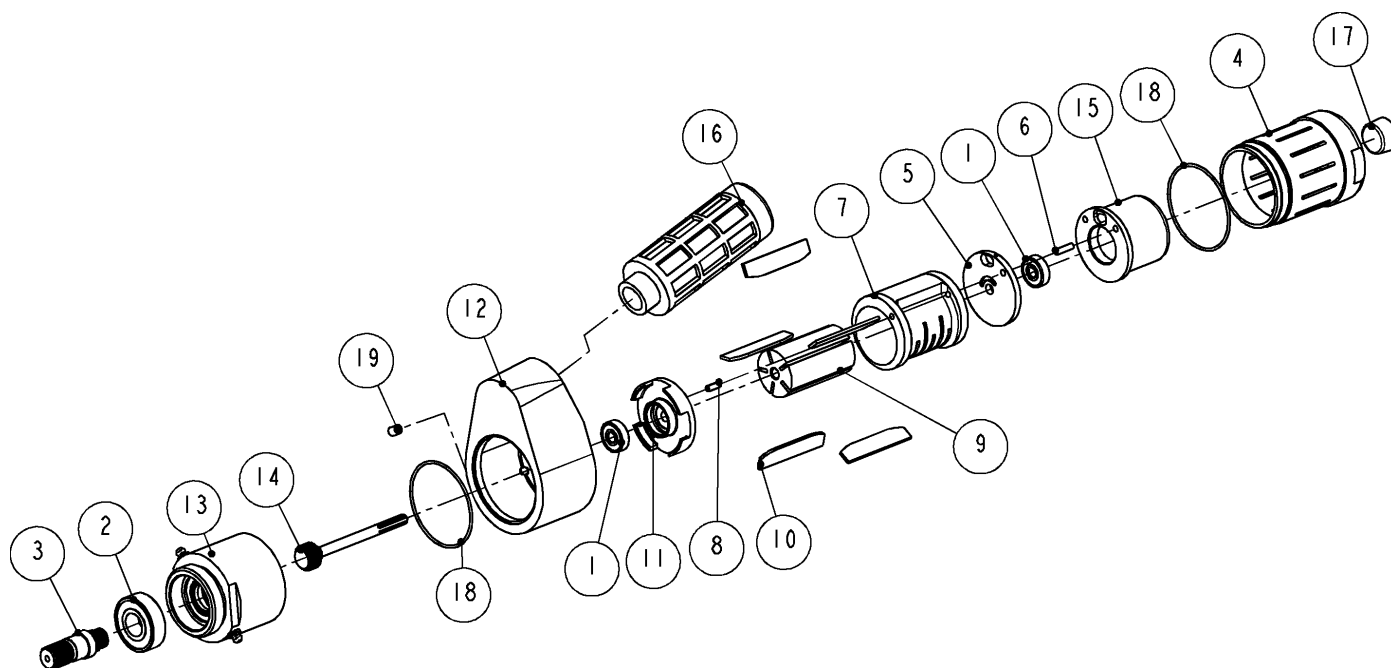
Figure 5 REAR HANDLE

FRONT HANDLE



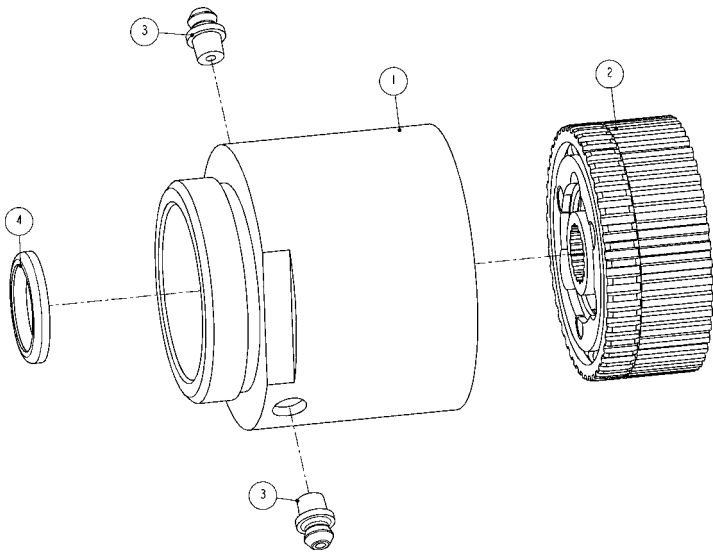
6551340: AIR HANDLE, FRONT			
ITEM	PART #	DESCRIPTION	QTY
1	6300770	VALVE PLUG	1
2	6541690	GUARD	1
3	6551270	BRACKET	1
4	6600350	BUSHING	1
5	6600360	VALVE STEM	1
6	6600500	LEVER	1
7	6620350	SLEEVE	1
8	6620390	HANDLE	1
9	7036510	ELBOW	2
10	7680080	O-RING	1
11	7680140	O-RING	1
12	8500580	NUT	1
13	8620080	PIN	1
14	8890010	SPRING	1
15	9213080	SCREW	2

Figure 6 FRONT HANDLE WITH AIR SWITCH

AIR MOTOR & GEAR CASE ASSEMBLY

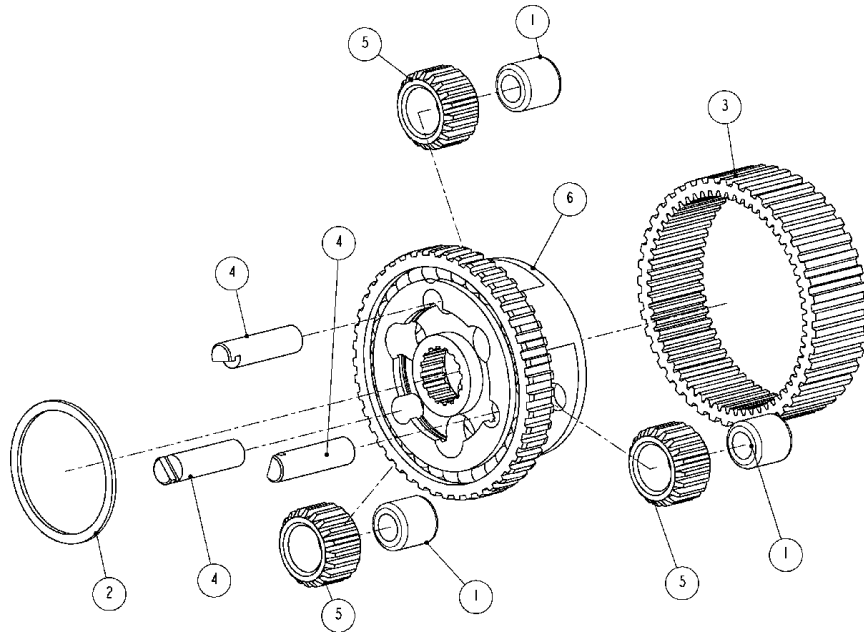
6330150; AIR MOTOR & GEAR CASE ASSEMBLY			
ITEM	PART #	DESCRIPTION	QTY
1	3072370	BEARING	2
2	3204030	BEARING	1
3	6000170	DRIVE SHAFT	1
4	6000660	HOUSING - AIR MOTOR	1
5	6000700	UPPER END PLATE	1
6	6000710	PIN	1
7	6000720	CYLINDER	1
8	6000730	PIN	1
9	6000740	ROTOR	1
10	6000750	ROTOR BLADES (SET OF 5)	5
11	6000760	LOWER END PLATE	1
12	6000940	DEFLECTOR	1
13	6001010	GEAR CASE ASSEMBLY	1
14	6001020	LONG GEAR SPINDLE	1
15	6320160	HEAD, AIR MOTOR	1
16	6330160	MUFFLER	1
17	7000040	PLUG	1
18	7680360	O-RING	2
19	8311030	SET SCREW	1

Figure 7 AIR MOTOR & GEAR CASE ASSEMBLY



6001010: GEAR CASE ASSEMBLY			
ITEM	PART #	DESCRIPTION	QTY
1	6000860	GEAR CASE	1
2	6001030	GEAR CAGE	1
3	7017110	GREASE FITTING	2
4	7774100	SEAL	1

Figure 8 GEAR CASE ASSEMBLY



6001030: GEAR CAGE ASSEMBLY			
ITEM	PART #	DESCRIPTION	QTY
1	3700470	NEEDLE BEARING	3
2	5601250	RETAINING RING	1
3	6000790	RING GEAR	1
4	6001040	PIN	3
5	6001050	IDLER GEAR	3
6	6001060	GEAR CAGE AND SPLINE RING ASSEMBLY	1

Figure 9 GEAR CAGE ASSEMBLY

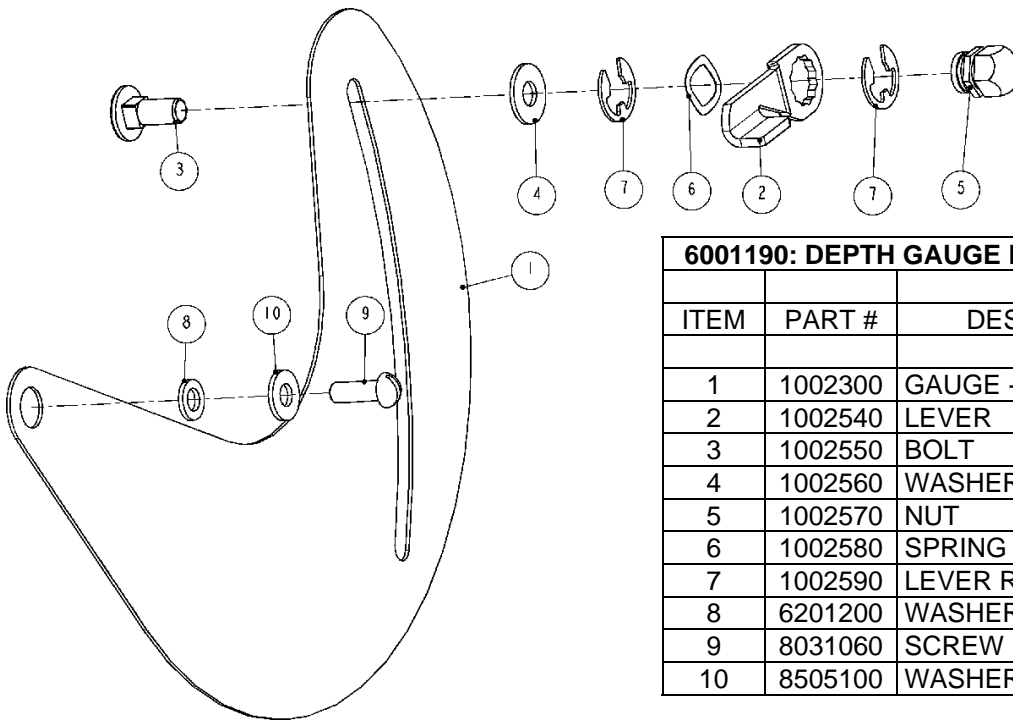
GEAR CASE AND AIRMOTOR DISASSEMBLY

1. LOOSEN SET SCREW, ITEM 19 (FIGURE 7).
2. USING WRENCH (OPTIONAL), ITEM KM# 4501300, REMOVE CASE, ITEM 13 (FIGURE 7).
3. TO DISASSEMBLE GEAR CAGE ASSEMBLY:
 - REMOVE RETAINING RING, ITEM 2 (FIGURE 9).
 - PRESS OUT PINS (3) AND BEARINGS (3), ITEMS 4 AND 1 (FIGURE 9).
4. SLIDE DEFLECTOR, ITEM 12 (FIGURE 7), OFF HOUSING, ITEM 4 (FIGURE 7).
5. SLIDE AIR MOTOR OUT OF HOUSING, ITEM 4 (FIGURE 7).
6. PULL GEAR, ITEM 14 (FIGURE 7), OUT OF AIR MOTOR.
7. PULL PLATES, ITEMS 5 AND 11 (FIGURE 7), OFF CYLINDER, ITEM 7 (FIGURE 7).

GEAR CASE AND AIRMOTOR REASSEMBLY

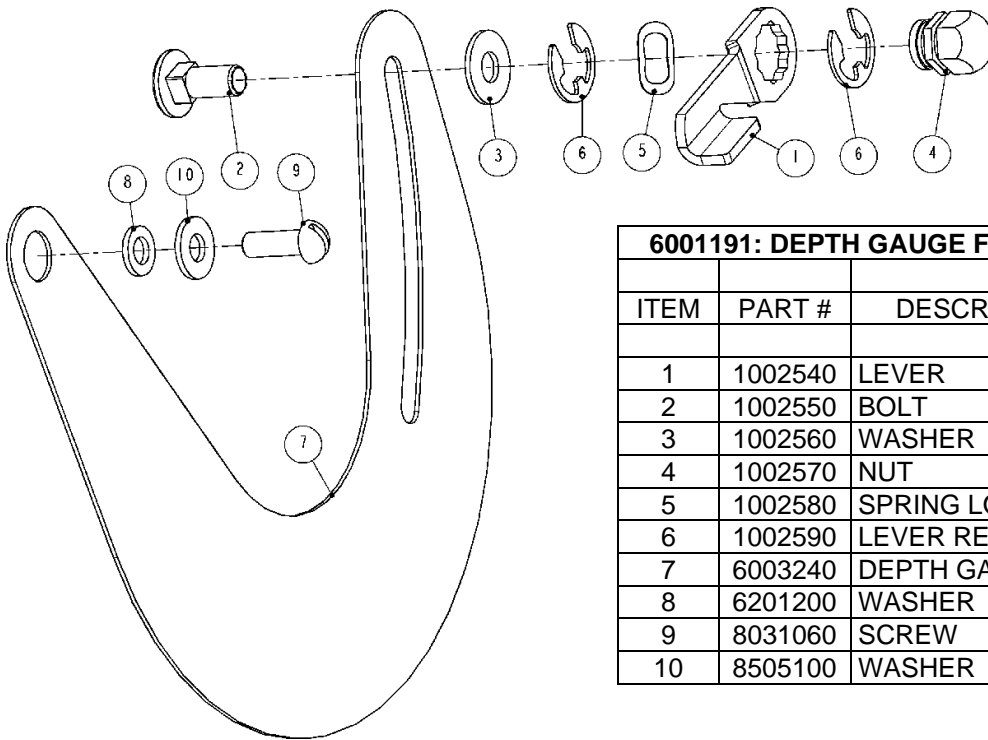
1. CLEAN AND LUBRICATE ALL PARTS PRIOR TO REASSEMBLY.
2. REASSEMBLE ALL PARTS IN REVERSE ORDER.
3. HAND TIGHTEN CASE, ITEM 13 (FIGURE 7), ONTO HOUSING, ITEM 4 (FIGURE 7).
4. ATTACH AIR TO TOOL. WITH TOOL ACTIVATED, TIGHTEN WITH A WRENCH, CASE ONTO HOUSING. THIS HELPS MAINTAIN THE ALIGNMENT OF AIRMOTOR TO GEAR CASE ASSEMBLY. DISCONNECT AIR SUPPLY.

DEPTH GAUGE



6001190: DEPTH GAUGE FOR 9" & 10" BLADE			
ITEM	PART #	DESCRIPTION	QTY
1	1002300	GAUGE - 10"	1
2	1002540	LEVER	1
3	1002550	BOLT	1
4	1002560	WASHER	1
5	1002570	NUT	1
6	1002580	SPRING LOAD	1
7	1002590	LEVER RETAINER	2
8	6201200	WASHER	1
9	8031060	SCREW	1
10	8505100	WASHER	1

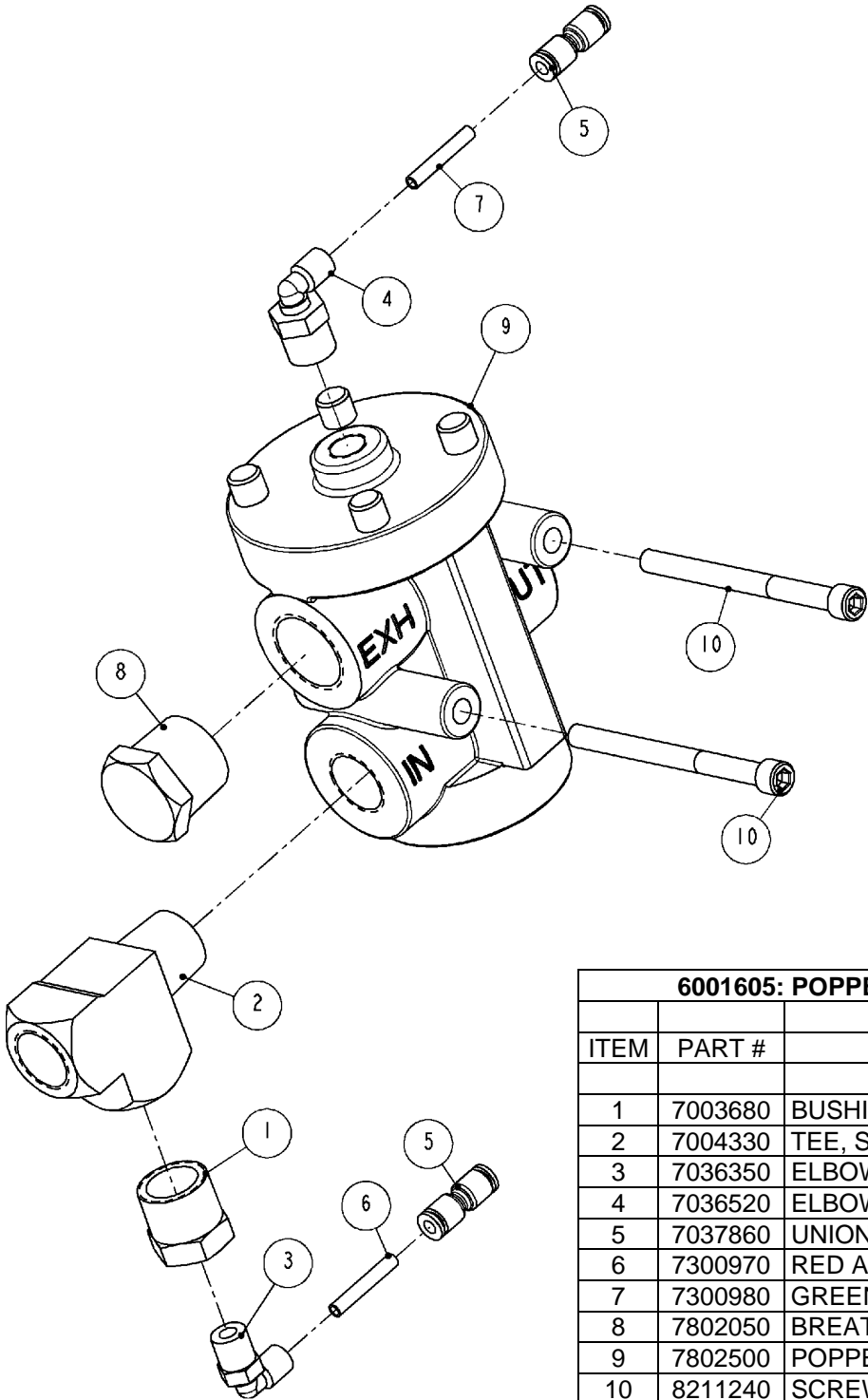
Figure 10 DEPTH GAUGE FOR 9" & 10" BLADE



6001191: DEPTH GAUGE FOR 8" BLADE			
ITEM	PART #	DESCRIPTION	QTY
1	1002540	LEVER	1
2	1002550	BOLT	1
3	1002560	WASHER	1
4	1002570	NUT	1
5	1002580	SPRING LOAD	1
6	1002590	LEVER RETAINER	2
7	6003240	DEPTH GAUGE	1
8	6201200	WASHER	1
9	8031060	SCREW	1
10	8505100	WASHER	1

Figure 11 DEPTH GAUGE FOR 8" BLADE

POPPET VALVE



6001605: POPPET VALVE ASSEMBLY			
ITEM	PART #	DESCRIPTION	QTY
1	7003680	BUSHING	1
2	7004330	TEE, STREET	1
3	7036350	ELBOW	1
4	7036520	ELBOW	1
5	7037860	UNION	2
6	7300970	RED AIR TUBE	1
7	7300980	GREEN AIR TUBE	1
8	7802050	BREATHER VENT FILTER	1
9	7802500	POPPET VALVE	1
10	8211240	SCREW	2

POPPET VALVE IS USED WITH MODEL "SL-1100" WITH TWO TRIGGERS.

Figure 12 POPPET VALVE ASSEMBLY

WIRING DIAGRAM

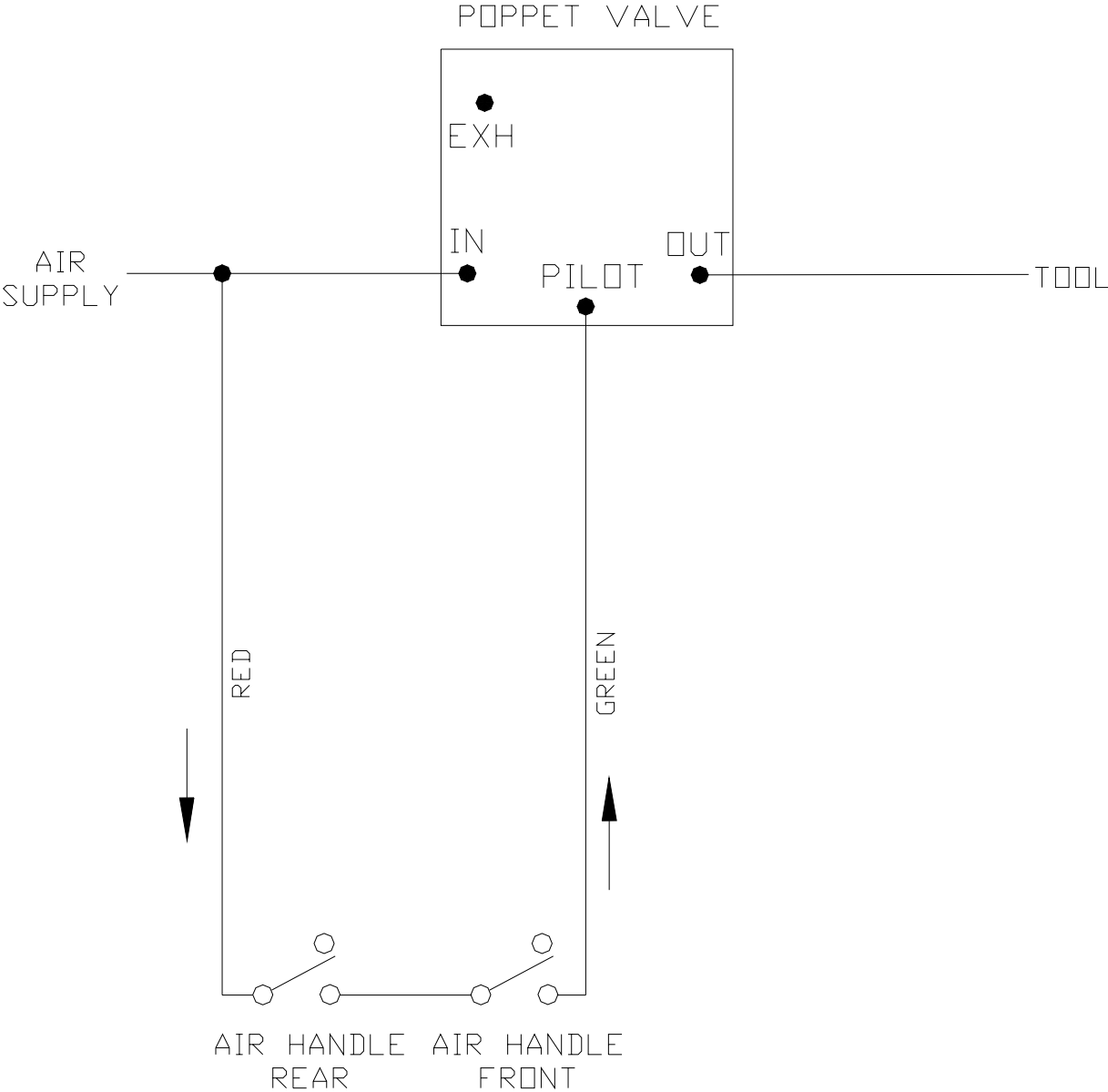
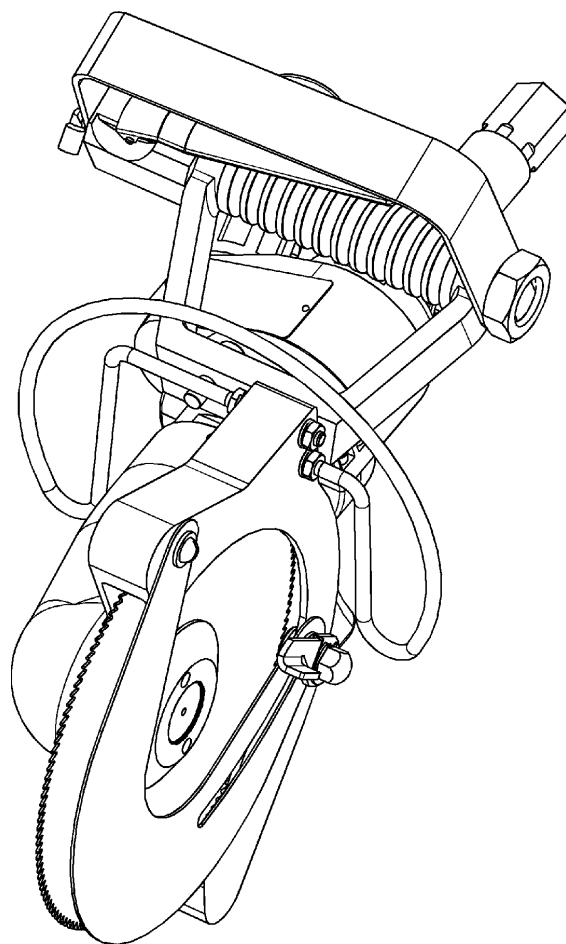


Figure 13 WIRING DIAGRAM

[ENGLISH]

GENERAL INFORMATION



MODELS "SL-1100" BREAKING SAW

SERVICE CENTERS

KENTMASTER LTD. (U.K)
16 AVONBANK INDUSTRIAL CENTRE
WEST TOWN ROAD
AVONMOUTH - BRISTOL BS11 9DE
UNITED KINGDOM

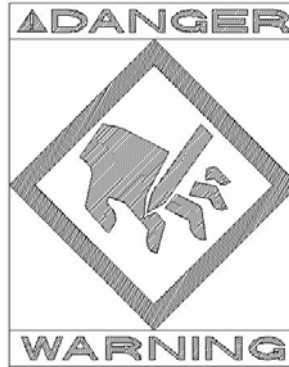
☎ TELEPHONE: ++ 44- (0) 117- 9235035
FAX: ++ 44- (0) 117- 9829010

KENTMASTER MFG. CO., INC.
1801 SOUTH MOUNTAIN AVE.
MONROVIA, CALIFORNIA 91016
UNITED STATES OF AMERICA

☎ TELEPHONE: (626) 359-8888
FAX: (626) 303-5151

NOTICE TO EMPLOYER AND PURCHASER OF TOOL
NOTICE TO SAFETY DIRECTOR

You have purchased a powerful tool that, if misused, can cause severe injury and harm to your employees. You must instruct your employees in the safe and proper use of this tool and to follow the safety procedures and instructions that have been supplied by the manufacturer of this tool. Please follow the following instructions.



1. Instruct tool operators to test the tool each day before using it to be sure it does not malfunction. Remove and repair any tool that malfunctions.
2. Instruct tool operators to immediately stop using a tool that malfunctions or is defective.
3. Instruct personnel to immediately remove all tools that malfunction. Be sure to disconnect tool from power supply.
4. Instruct all personnel to stay clear of tool, and not to stand or walk in front of, or next to tool when in use.
5. Point out to all personnel the dangers related to the misuse of tool and the importance of following safety procedures and instructions.
6. Do not make, or allow others to make, alterations or modifications to this tool. Replace all lost or illegible labels.
7. Follow all safety, installation and maintenance instructions provided with this tool. Establish proper safety procedures in accordance with local and national requirements to prevent accidental energizing of tool that can cause injuries.
8. If this tool is sold or change in ownership takes place, you must provide the new owner all safety instructions, notices and maintenance instructions you were originally provided. You can obtain additional copies of the instructions from Kentmaster, free of charge upon request.
9. Give copies of instructions to:
 - (A) Tool Operators**
 - (B) Maintenance Supervisor**
 - (C) Clean-up Supervisor**

GENERAL INFORMATION




COVERING: SAFETY PRECAUTIONS AND PLACING INTO SERVICE


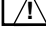
AIR POWERED BREAKING SAW

READ THIS MANUAL CAREFULLY BEFORE INSTALLING, OPERATING OR SERVICING THIS TOOL

IT IS THE RESPONSIBILITY OF THE EMPLOYER TO PLACE THIS INFORMATION INTO THE HANDS OF THE OPERATOR.


PLACING INTO SERVICE

- | | |
|--|---|
|  WARNING | = Hazards or unsafe practices which could result in severe personal injury, death or substantial property damage. |
|  CAUTION | = Hazards or unsafe practices which could result in minor personal injury, product or property damage. |
|  NOTICE | = Important installation, operation or maintenance information. |

- | | |
|--|---|
|  WARNING | Installation, adjustment repair and maintenance of this tool must be made by trained and qualified personnel. |
|  WARNING | Always disconnect power supply from tool before: <ul style="list-style-type: none"> (A) Installing or removing blade from tool. (B) Making repairs or adjustments to the tool. (C) performing maintenance or cleanup work. |

INSTALLATION INSTRUCTIONS

MAINTENANCE

 **WARNING** ONLY TRAINED AND QUALIFIED PERSONNEL ARE TO PERFORM MAINTENANCE AND SERVICE TO THIS TOOL.

THE COMPRESSED AIR DISTRIBUTION SYSTEM MUST BE LARGE ENOUGH TO SUPPLY AN ADEQUATE VOLUME OF CLEAN AND DRY COMPRESSED AIR TO THE TOOL.

1. MAKE ALL NECESSARY LINE CONNECTIONS TO THE TOOL.
2. AN AIR FILTER-REGULATOR-LUBRICATOR (PART NO. 7200030) MUST BE INSTALLED IN AIR SUPPLY FOR EACH TOOL.
3. FILL LUBRICATOR WITH KENTMASTER AIR MIST OIL (PART NO. 7903050). SET DRIP RATE ACCORDING TO INSTRUCTIONS SUPPLIED. TURN ADJUSTMENT ON SIGHT FEED DOME TO INCREASE/DECREASE OIL DELIVERY. MONITOR THE DEVICE BEING LUBRICATED AND READJUST IF NEEDED.
4. TOOL REQUIRES GREASING AT START OF EACH SHIFT. GREASE FOUR (4) LOCATIONS USING KENTMASTER GREASE GUN (PART NO. 4501470) AND GREASE (PART NO. 7903070).
5. TOOL REQUIRES 40 S.C.F.M. OF AIR @ 90 P.S.I. AIR PRESSURE.

6. FLUSH AIR MOTOR AT END OF EACH DAY'S USE BY SQUIRTING A FEW SQUIRTS OF KENTMASTER AIR OIL MIST (PART 7903050) DIRECTLY INTO THE AIR INLET PORT. RUN TOOL A FEW SECONDS TO COAT AND PROTECT THE AIR MOTOR AND INTERNAL PARTS OF TOOL
7. A BALANCER IS REQUIRED FOR OPERATION AND USE OF THIS TOOL. WEIGHT OF TOOL MUST FALL WITHIN WEIGHT RANGE OF BALANCER.
8. INSTALL BALANCER ABOVE WORK AREA. BALANCER MUST HAVE SUFFICIENT VERTICAL TRAVEL SO OPERATOR CAN REACH ENTIRE WORK AREA WITH TOOL WITHOUT STRAIN.
9. ADJUST BALANCER ACCORDING TO THE OPERATOR'S PREFERENCE AND COMFORT.

**WARNING**

WE STRONGLY SUGGEST THAT AN ADDITIONAL SAFETY CHAIN BE USED TO CHAIN BALANCER TO OVERHEAD TROLLEY. THIS ADDITIONAL MEASURE OF SAFETY WILL HELP REDUCE INJURIES.

OPERATING INSTRUCTIONS

**WARNING**

ONLY TRAINED PERSONNEL ARE TO OPERATE THIS TOOL.

1. HOLD TOOL FIRMLY AT BOTH TRIGGER HANDLES. SQUEEZE TRIGGERS SIMULTANEOUSLY TO ACTIVATE TOOL.
2. DO NOT EXERT EXCESSIVE PRESSURE. ALLOW TIME FOR THE TOOL TO CUT.

BLADE REMOVAL AND CLEANING.

**WARNING**

ALWAYS DISCONNECT POWER SUPPLY FROM TOOL BEFORE INSTALLING OR REMOVING BLADE FROM TOOL.

**WARNING**

ALWAYS WEAR WIRE MESH GLOVES WHEN INSTALLING OR REMOVING BLADES FROM TOOL.

1. REMOVE COLLAR (ITEM NO. 1, FIG. NO. 1).
2. REMOVE BLADE (ITEM NO. 2, FIG. NO. 1).
3. CLEAN ALL PARTS REMOVED WITH SOAP AND WATER.
4. SHARPEN OR REPLACE BLADES WHEN NECESSARY.
5. REASSEMBLE IN REVERSE ORDER.

SERVICE

1. KEEP GOOD RECORDS OF ALL SERVICE ACTIVITY AND INCLUDE TOOL IN YOUR PREVENTIVE MAINTENANCE PROGRAM.
2. USE ONLY GENUINE KENTMASTER REPLACEMENT PARTS TO ASSURE PROPER PERFORMANCE OF TOOL.
3. CONTACT THE KENTMASTER SUPPLIER NEAREST YOU FOR PARTS AND CUSTOMER SERVICE INFORMATION.

DECLARATION OF CONFORMITY**DECLARATION OF CONFORMITY**DECLARATION DE CONFORMITE -DECLARACION DE CONFORMIDAD- ERKLARUNG BEZUGLICH EINHALTUNG DER VORSCHRIFTEN
DICHIARAZIONE DI CONFORMITA . CONFORMITEITSVERKLARING**MANUFACTURED BY:**FABRIQUE PAR:
FABRICADA POR:
HERGESTELLTVON:
FABBRICATO DA:
VERVAARDIGD DOOR:**KENTMASTER MFG CO., INC.****1801 SOUTH MOUNTAIN AVE.
MONROVIA, CALIFORNIA 91016
UNITED STATES OF AMERICA
TELEPHONE (626) 359-8888 FAX (626) 303-5151****TYPE / SERIES: BREAKING SAW**TYPE / SERIE:
TIPO / SERIE:
TYP / SERIE:
TIPO / SERIE:
TYPE / SERIE:**MODEL: SL-1100**MODELE:
MODELO:
MODELL:
MODELLO:
MODEL:**SERIAL NO. RANGE: XXXXX**

N SERIE: • GAMA DE No. DE SERIE: • SERIEN-NR.-BEREICH: • NUMERI DI SERIE: • SERIENUMMERS:

This product complies with the following European Community Directives:Ce produit est conforme aux directives de la Communauté européenne suivantes:
Este producto cumple con las siguientes Directrices de la Comunidad Europea:
Dieses Produkt erfüllt die folgenden Vorschriften der Europäischen Gemeinschaft:
Questo prodotto è conforme alle seguenti direttive CEE:
Dit produkt voldoet aan de volgende EG-richtlijnen:**89/392/EEC, 91/368/EEC, 93/44/EEC, 93/68/EEC****The following Standards were used to verify compliance with the Directives:**Les normes suivantes ont été utilisées pour vérifier la conformité avec les Directives:
Las siguientes Normas se usaron para verificar el cumplimiento de las Directrices:
Folgende Normen wurden angewandt, um Erfüllung der Vorschriften zu bestätigen:
Per verificare la conformità del prodotto alle direttive sono stati usati i seguenti standard:
De volgende normen zijn gebruikt om naleving van de richtlijnen te bevestigen:**EN 292****Approved by:** _____RALPH KARUBIAN MONROVIA, CA. U.S.A.
(Engineering Manager) (Directeur technique) (gerente de ingenieria) (verantwortlicher Konstruktionsleiter) (Responsabile tecnico) (ondersteunend technisch manager)**Date: AUG - 1 - 1995**

Kentmaster Worldwide Location

Kentmaster Equipment (Aust) PTY.LTD.

Unit 2,24 Central Court
Browns Plains Qld. 4118
Australia

Telephone: (07) 3806-8400

Fax: (07) 3806-7933

Australia@Kentmaster.com

Kentmaster do Brasil, Ltda.

Av. Dr. Joao Teodoro No. 805
Bairro De Vila Rezende
13405-240 Piracicaba, SP,
Brazil

Telephone #1: (019) 3 413 3113

Telephone #2: (019)983-4973

Fax: (019) 3 413 3113

Brazil@Kentmaster.com

Kentmaster (IRL) LTD.

Benamore, Dublin Road.
Roscrea,
CO, Tipperary,
Ireland

Telephone: (353) 0505-23292

Fax: (353) 0505-23299

Ireland@Kentmaster.com

Kentmaster Equipment (NZ) LTD.

5 Cooper Street
Havelock North
New Zealand

Telephone #1: (64) 6 8777 857

Telephone #2: 0800 KENTMASTER

Fax: (64) 6 8777 858

NewZealand@Kentmaster.com

Kentmaster South Africa (PTY) LTD.

Johannesburg - S. Africa
Unit 54 Sunnyrock Park
Sunrock Close, Germiston
South Africa

Telephone: (27) 11-455-3748

Fax: (27) 11-455-3749

SouthAfrica@Kentmaster.com

Kentmaster (UK) LTD.

Unit 16 Avonbank Ind. Centre
West Town Rd, Avonmouth-Bristol,
BS11 9DE
England

Telephone: (44) 117-923-5035

Fax: (44)-117-932-9010

UK@Kentmaster.com

Kentmaster Mfg. Co., Inc.

1801 South Mountain Ave.
Monrovia, CA, 91016
USA

Telephone #1: (626) 359-8888

Telephone #2: (800) 421-1477

Fax: (626) 303-5151

info@Kentmaster.com

Kentmaster Omaha

4417 South 139th Street
Omaha, NE, 68137
USA

Telephone #1: (402) 896-3355

Telephone #2: (800) 367-3181

Fax: (402) 896-3311

Omaha@Kentmaster.com

INDEX

OPERATING AND SAFETY INSTRUCTIONS..... 2

OPERATING INSTRUCTIONS..... 3

MAINTENANCE..... 3

SERVICE 4

PARTS BOOK..... 5

GEAR-NOSE ASSEMBLY..... 7

 GEAR HOUSING DISASSEMBLY 8

 GEAR HOUSING REASSEMBLY 8

HANDLES 8

 REAR HANDLE 8

 FRONT HANDLE..... 9

AIR MOTOR & GEAR CASE ASSEMBLY 10

 GEAR CASE AND AIRMOTOR DISASSEMBLY 12

 GEAR CASE AND AIRMOTOR REASSEMBLY 12

DEPTH GAUGE..... 13

POPPET VALVE..... 14

WIRING DIAGRAM 15

GENERAL INFORMATION 18

INSTALLATION INSTRUCTIONS 18

MAINTENANCE..... 18

OPERATING INSTRUCTIONS..... 19

SERVICE..... 19

DECLARATION OF CONFORMITY..... 20

Kentmaster Worldwide Location 21

INDEX..... 22

FIGURES - INDEX..... 22

FIGURES - INDEX

Figure 1 MODEL SL-1100 – BLADE REPLACEMENT 4

Figure 2 MODEL “SL-1100” – MAIN ASSEMBLY 5

Figure 3 BOM FOR MODEL “SL-1100” 6

Figure 4 GEAR-NOSE ASSEMBLY 7

Figure 5 REAR HANDLE 8

Figure 6 FRONT HANDLE WITH AIR SWITCH 9

Figure 7 AIR MOTOR & GEAR CASE ASSEMBLY 10

Figure 8 GEAR CASE ASSEMBLY 11

Figure 9 GEAR CAGE ASSEMBLY 11

Figure 10 DEPTH GAUGE FOR 9” & 10” BLADE 13

Figure 11 DEPTH GAUGE FOR 8” BLADE 13

Figure 12 POPPET VALVE ASSEMBLY 14

Figure 13 WIRING DIAGRAM 15