

# **TURBO-III-A DEHIDER**

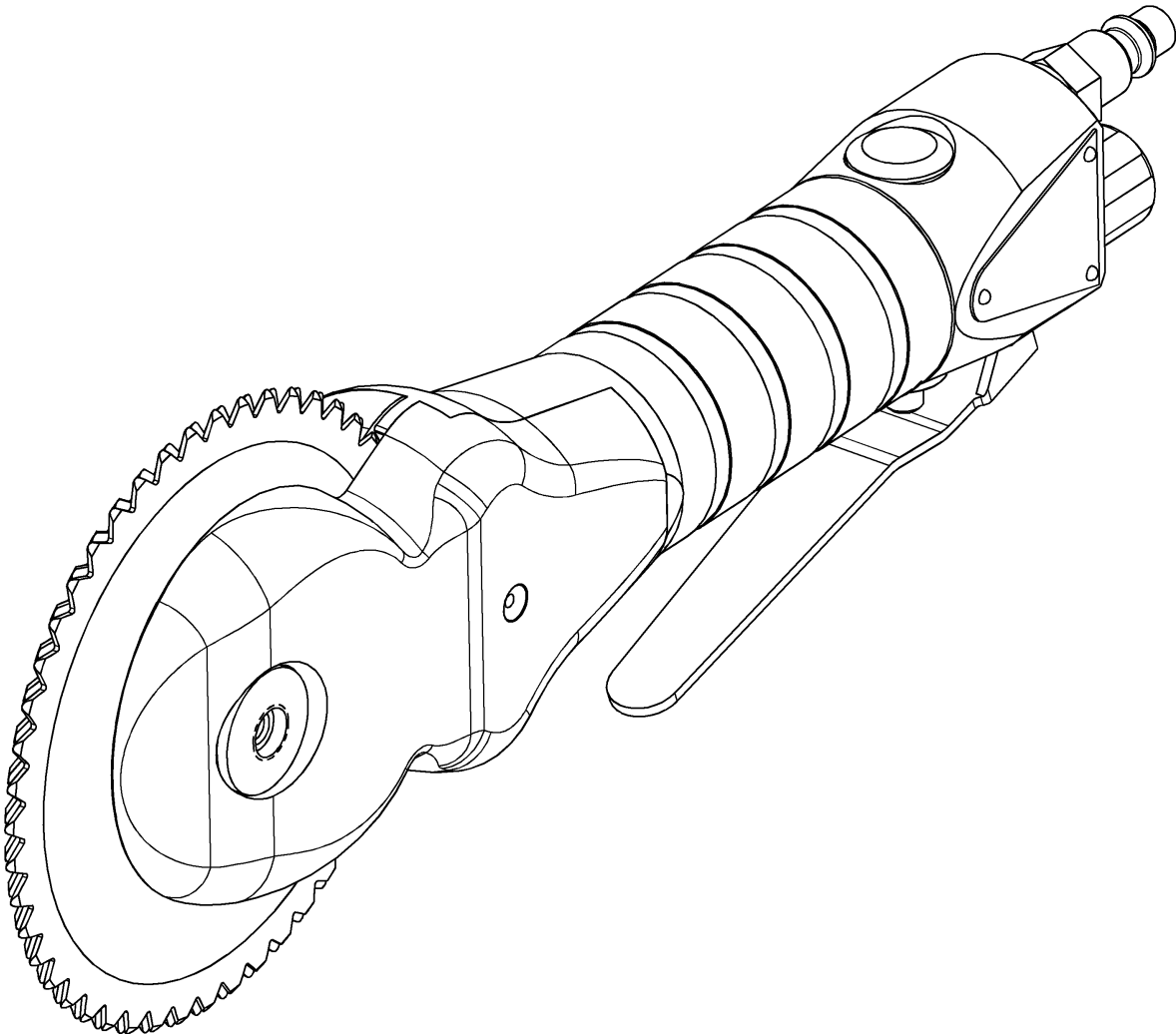
**INCLUDING: OPERATION, INSTRUCTION, INSTALLATION, MAINTENANCE AND PARTSBOOK**

**IMPORTANT: READ THIS MANUAL CAREFULLY BEFORE INSTALLING, OPERATING OR  
SERVICING THIS TOOL.**

## **DEHIDER**

### **TOOL DATA**

MODEL: TURBO-III-A DEHIDER  
ASSEMBLY NO: 6303000  
TYPE: AIR OPERATED  
NET WEIGHT: 2 LBS 12 OZ (1.26 KG)  
INLET AIR PRESSURE: 90 P.S.I. (6 BARS)



**WARNING**

= Hazards or unsafe practices which could result in severe personal injury, death or substantial property damage.

**CAUTION**

= Hazards or unsafe practices which could result in minor personal injury, product or property damage.

**NOTICE**

= Important installation, operation or maintenance information.

## OPERATING AND SAFETY INSTRUCTIONS

**WARNING**

DO NOT OPERATE THIS TOOL UNTIL YOU HAVE READ AND UNDERSTOOD THE SAFETY INSTRUCTIONS AND OPERATING MANUALS.

**WARNING**

DO NOT OPERATE THIS TOOL UNTIL YOU HAVE RECEIVED TRAINING IN THE HANDLING, OPERATION AND USE OF THIS TOOL.

**WARNING**

STOP USING A MALFUNCTIONING OR DEFECTIVE TOOL IMMEDIATELY. REPORT ANY PROBLEMS OR DEFECTS TO YOUR SUPERVISOR FOR REMOVAL OF THE TOOL FROM SERVICE.

**WARNING**

DO NOT ATTEMPT TO REPAIR THE TOOL YOURSELF.

**WARNING**

DO NOT ALLOW UNAUTHORIZED PERSONS TO USE TOOL.

**WARNING**

REMOVE AND DISCONNECT POWER FROM THE TOOL WHEN TOOL IS LEFT UNATTENDED OR IS NOT IN USE.

**WARNING**

NEVER TIE DOWN, BYPASS, ALTER OR MODIFY THE ACTIVATING SWITCHES OR TRIGGERS OF THIS TOOL.

**WARNING**

NEVER MAKE ALTERATIONS OR MODIFICATIONS TO THIS TOOL.

**WARNING**

BE CONSTANTLY AWARE AND ALERT FOR UNSAFE CONDITIONS AND REPORT THEM IMMEDIATELY TO YOUR SUPERVISOR.

**WARNING**

NEVER PLACE YOUR HAND OR ANY PART OF YOUR BODY IN THE CUTTING PATH OF THE TOOL.

**WARNING**

NEVER ALLOW ANYONE ELSE TO PLACE THEIR HANDS OR ANY PART OF THEIR BODY IN THE CUTTING PATH OF THE TOOL.

**WARNING**

DO NOT ACTIVATE CONTROL SWITCHES OR TRIGGERS OF THIS TOOL UNLESS YOU INTEND TO TEST OR OPERATE THIS TOOL.

**WARNING**

DO NOT USE THIS TOOL FOR ANY PURPOSE OTHER THAN IT'S INTENDED PURPOSE.

**CAUTION**

WHEN OPERATING THIS TOOL WEAR THE PROTECTIVE GEAR AND SAFETY EQUIPMENT SUPPLIED TO YOU.

**WARNING**

THE NOISE EMISSION (SOUND PRESSURE LEVEL) AT THE WORKSTATION MAY EXCEED 85 dB (A). EAR AND SOUND PROTECTION GEAR IS REQUIRED.

## OPERATING INSTRUCTIONS

**⚠ WARNING** ONLY TRAINED PERSONNEL ARE TO OPERATE THIS TOOL.

1. HOLD TOOL FIRMLY IN HAND WITH TRIGGER LEVER IN POSITION TO BE ACTIVATED BY FINGERS.
2. SQUEEZE TRIGGER TO ACTIVATED TOOL, RELEASE TRIGGER TO DEACTIVATE TOOL.
3. POSITION TOOL AND PERFORM CUTTING OPERATION.
4. DO NOT LAY TOOL DOWN WHEN TOOL IS NOT BEING USED. PLACE TOOL IN BRACKET (PART NO. 630100). BRACKET SHOULD BE MOUNTED IN A CONVENIENT LOCATION NEAR OPERATOR.
5. TOOL REQUIRES 40 S.C.F.M. OF AIR @ 90 P.S.I. AIR PRESSURE.

## MAINTENANCE

**⚠ WARNING** ONLY TRAINED AND QUALIFIED PERSONNEL ARE TO PERFORM MAINTENANCE AND SERVICE TO THIS TOOL.

1. FILL LUBRICATOR WITH KENTMASTER AIR MIST OIL (PART NO. 7903050). SET DRIP RATE ACCORDING TO INSTRUCTIONS SUPPLIED.
2. TOOL REQUIRES GREASING AFTER EVERY 3 TO 4 HOURS OF OPERATION. GREASE THREE (3) LOCATIONS USING KENTMASTER GREASE GUN (PART NO. 450147) AND GREASE (PART NO. 790307).
3. FLUSH AIR MOTOR AT END OF EACH DAY'S USE BY SQUIRTING A FEW SQUIRTS OF KENTMASTER AIR OIL MIST (PART NO. 790305) DIRECTLY INTO THE AIR INLET PORT. RUN TOOL A FEW SECONDS TO COAT AND PROTECT THE AIR MOTOR AND INTERNAL PARTS OF TOOL.

### MAINTENANCE:

TURBO III DEHIDER IS A SUPERIOR DESIGNED, HIGH-QUALITY, HIGH-SPEED PRECISION TOOL THAT MUST BE KEPT CLEAN, PROPERLY LUBRICATED FOR EFFICIENT OPERATION AND BEST PERFORMANCE.

1. THE DEHIDER REQUIRES GREASING AFTER EACH 3 TO 4 HOURS OF OPERATION USING GREASE GUN (PART #450147) AND KENTMASTER GREASE. PUMP 5 TO 7 AQUIRTS OF GREASE INTO GREASE FITTING AT THREE LOCATIONS (SHOWN ON ASSEMBLY DRAWING).
2. AT THE END OF EACH DAY REMOVE BLADES FROM DEHIDER, WASH THOROUGHLY WITH SOAP AND WATER AND RESHARP BLADES AS NECESSARY. DIP BLADES IN MINERAL OIL AND INSTALL BACK INTO DEHIDER READY FOR USE.
3. FLUSH AIR MOTOR AT THE END OF EACH DAY'S USE BY SQUIRTING A FEW SQUIRTS OF KENTMASTER AIR MIST OIL DIRECTLY INTO THE AIR INLET PORT (#703407) OF THE DEHIDER AND RUNNING THE DEHIDER FOR A FEW SECONDS TO COAT AND PROTECT THE AIR MOTOR AND INTERNAL PARTS.

### DISASSEMBLY AND ASSEMBLY:

REMOVE AIR MOTOR PRIOR TO REMOVE ECCENTRIC AND BEVEL GEAR ASSEMBLY BY REMOVING THE VALVE BODY ASSEMBLY (#630263) AND RETAINING RING (#500131). AIR MOTOR AND GEAR ASSEMBLY (#630261) WILL SLIDE OUT.

## BLADE REMOVAL AND CLEANING

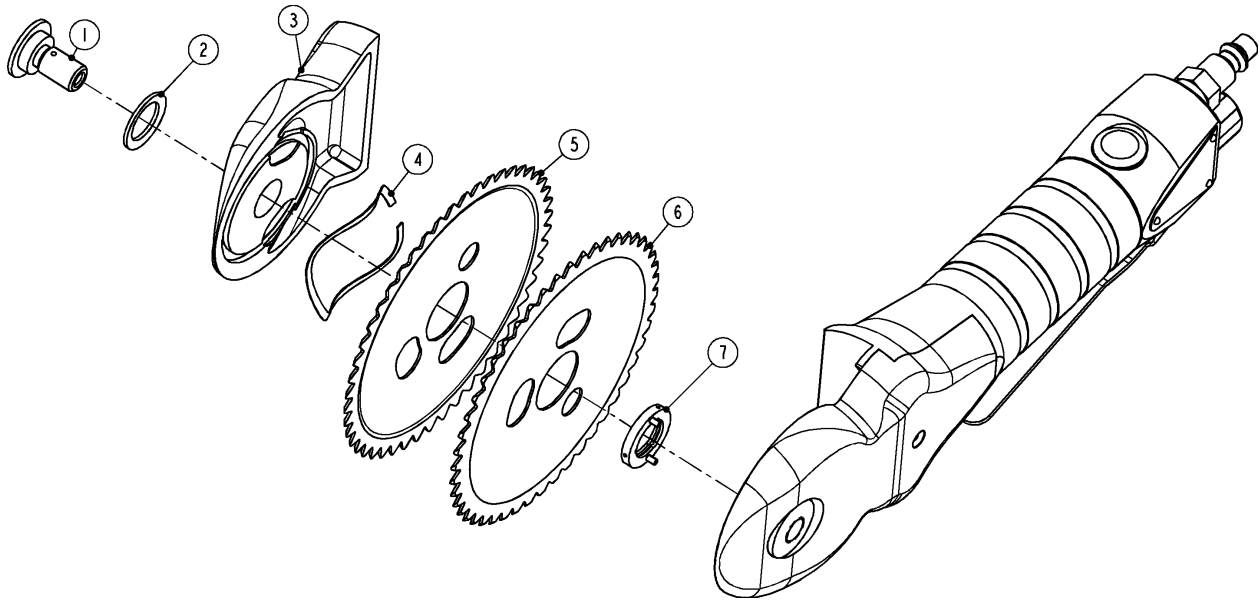
**WARNING**

ALWAYS DISCONNECT POWER SUPPLY FROM TOOL BEFORE INSTALLING OR REMOVING BLADE FROM TOOL.

**WARNING**

ALWAYS WEAR WIRE MESH GLOVES WHEN INSTALLING OR REMOVING BLADE FROM TOOL.

1. REMOVE COVER SCREW (ITEM NO. 1, FIG. NO. 1).
2. REMOVE PARTS (ITEM NOS. 2-7, FIG. NO. 1).
3. CLEAN ALL PARTS REMOVED WITH SOAP AND WATER.
4. SHARPEN BLADES WHEN NECESSARY AND LUBRICATE ALL PARTS.
5. REASSEMBLE ALL PARTS IN REVERSE ORDER.



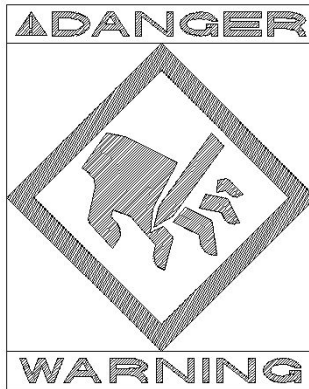
**Figure 1 BLADE REMOVAL**

**SERVICE**

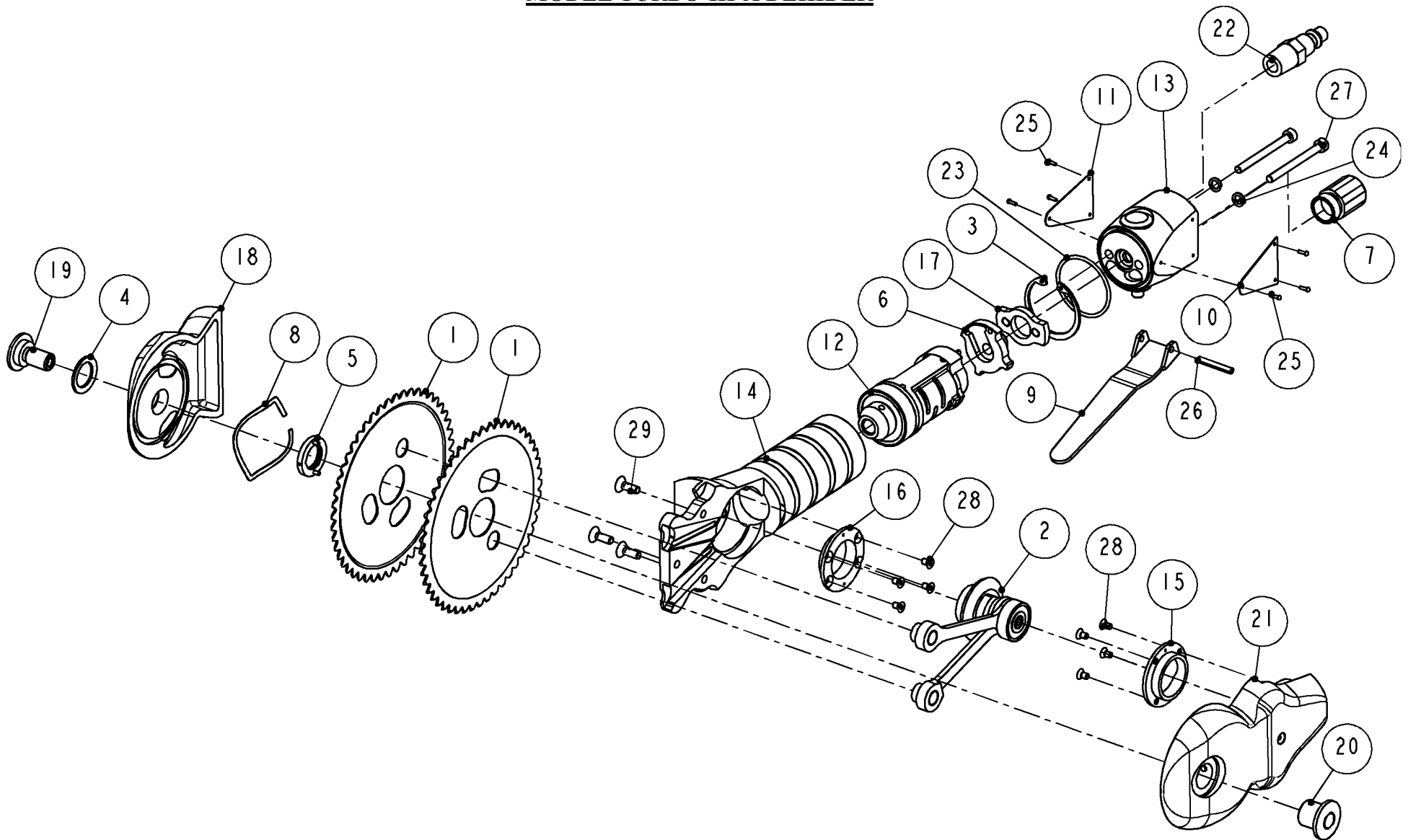
1. KEEP GOOD RECORDS OF ALL SERVICE ACTIVITY AND INCLUDE TOOL IN PREVENTIVE MAINTENANCE PROGRAM.
2. USE ONLY GENUINE KENTMASTER REPLACEMENT PARTS TO ASSURE PROPER PERFORMANCE OF TOOL.
3. CONTACT THE KENTMASTER SUPPLIER NEAREST YOU FOR PARTS AND CUSTOMER SERVICE INFORMATION.
4. SAFETY DATA FOR LOCTITE CORPORATION PRODUCTS "LOCQUIC - PRIMER N" AND "LOCTITE - 272"



*EYE IRRITANT, MAY IRRITATE SENSITIVE SKIN. CONTAINS METHACRYLATE ESTER. IN CASE OF EYE CONTACT, FLUSH WITH WATER FOR FIFTEEN (15) MINUTES; GET MEDICAL ATTENTION. WASH AFTER SKIN CONTACT. IN CASE OF SKIN IRRITATION, DISCONTINUE CONTACT WITH PRODUCT. TO AVOID SKIN CONTACT, USE THE APPLICATOR NOZZLE PROVIDED. OTHER APPLICATORS ARE AVAILABLE FROM LOCTITE CORPORATION.*  
**KEEP MATERIAL AWAY FROM CHILDREN.**



**PARTS BOOK**  
**MODEL TURBO-III-A DEHIDER**



**Figure 2 6303000: MODEL TURBO-III-A**

**KENTMASTER MFG. CO., INC.** 1801 SOUTH MOUNTAIN AVE., MONROVIA, CALIFORNIA 91016 UNITED STATES OF AMERICA

☎ TELEPHONE: (626) 359-8888 FAX: (626) 303-5151

LOCTITE CORP. PRODUCTS "LOCQUIC – PRIMER N" AND ADHESIVE "LOCTITE 242" MUST BE APPLIED TO ITEMS 14, 21, 28, 29 FIG.2, PRIOR TO ASSEMBLY.

FOR "PRIMER – N":

- A. CLEAN PARTS
- B. SPRAY THREADS ON SCREWS AND MATING PARTS WITH "PRIMER – N"
- C. ALLOW PRIMER TO DRY 3-5 MINUTES

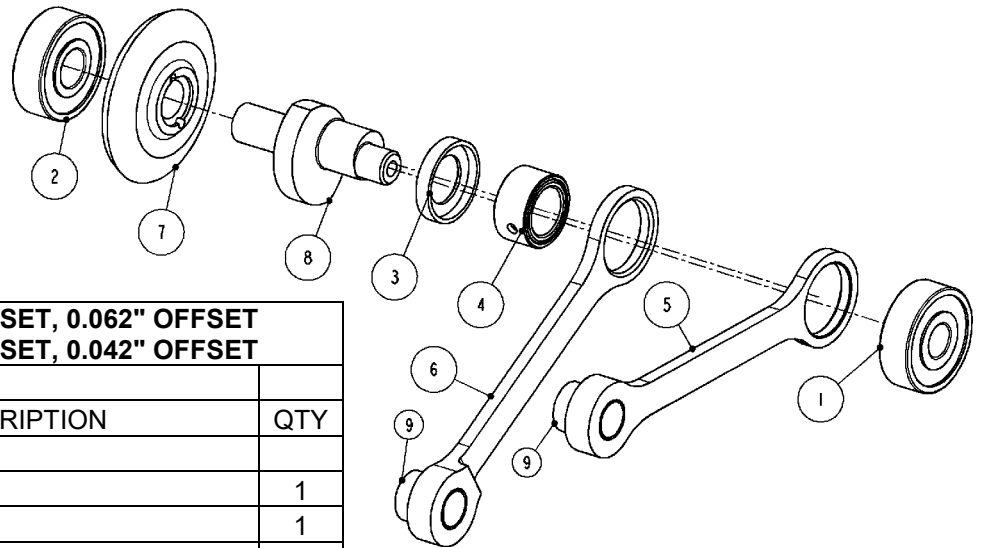
FOR "LOCTITE 242":

- A. CLEAN AND DRY PARTS
- B. APPLY 242 TO THREADS ON SCREWS AND MATING PARTS
- C. ASSEMBLE AND LET STAND FOR 30 MINUTES

| <b>6303000: DEHIDER TURBO-III-A</b> |         |  |     |
|-------------------------------------|---------|--|-----|
| ITEM                                | PART #  | DESCRIPTION  | QTY |
| 1                                   | 6300370 | BLADE SET (110mm)(4.33") -includes two blades - STANDARD | 1   |
|                                     | 6300390 | BLADE SET (100mm)(3.98") -includes two blades - OPTIONAL | 1   |
| 2                                   | 6302810 | ASSEMBLY, ECCENTRIC SHAFT, 0.062" OFFSET - STANDARD      | 1   |
|                                     | 6303170 | ASSEMBLY, ECCENTRIC SHAFT, 0.042" OFFSET - OPTIONAL      | 1   |
| 3                                   | 5001310 | RETAINING RING   | 1   |
| 4                                   | 6300560 | WASHER   | 1   |
| 5                                   | 6300580 | BLADE SPACER   | 1   |
| 6                                   | 6300740 | AIR SUPPLY RING  | 1   |
| 7                                   | 6300840 | MUFFLER  | 1   |
| 8                                   | 6302360 | SPRING LOAD  | 1   |
| 9                                   | 6302430 | LEVER  | 1   |
| 10                                  | 6302440 | LABEL - KENTMASTER                                       | 1   |
| 11                                  | 6302450 | NAME PLATE - TURBO III                                   | 1   |
| 12                                  | 6302610 | AIR MOTOR ASSEMBLY                                       | 1   |
| 13                                  | 6302630 | VALVE ASSEMBLY   | 1   |
| 14                                  | 6302740 | HOUSING, FRAME   | 1   |
| 15                                  | 6302770 | FLANGE COVER   | 1   |
| 16                                  | 6302780 | FLANGE, FRAME  | 1   |
| 17                                  | 6302820 | LOCK RING, VALVE   | 1   |
| 18                                  | 6302830 | COVER  | 1   |
| 19                                  | 6302880 | SCREW, COVER LOCK  | 1   |
| 20                                  | 6302910 | INSERT   | 1   |
| 21                                  | 6302920 | COVER, DRIVE SIDE (W/GREASE FITTING)                     | 1   |
| 22                                  | 7034070 | MALE PLUG  | 1   |
| 23                                  | 7680270 | O-RING   | 1   |
| 24                                  | 8506590 | WASHER   | 2   |
| 25                                  | 8640030 | DRIVE SCREW  | 6   |
| 26                                  | 8653140 | PIN  | 1   |
| 27                                  | 9208140 | SCREW  | 2   |
| 28                                  | 9234020 | SCREW  | 8   |
| 29                                  | 9238040 | SCREW  | 3   |

**Figure 3 BOM FOR MODEL TURBO-III-A**

**ECCENTRIC SHAFT ASSEMBLY**



| 6302810: ECCENTRIC SHAFT SET, 0.062" OFFSET |         |                               |     |
|---|---------|-------------------------------|-----|
| 6303170: ECCENTRIC SHAFT SET, 0.042" OFFSET |         |                               |     |
| ITEM  | PART #  | DESCRIPTION                   | QTY |
| 1   | 3070370 | BEARING                       | 1   |
| 2   | 3071380 | BEARING                       | 1   |
| 3   | 6300650 | SPACER                        | 1   |
| 4   | 6300850 | NEEDLE BEARING ASSEMBLY       | 1   |
| 5   | 6302540 | DRIVE LINK, RIGHT             | 1   |
| 6   | 6302550 | DRIVE LINK, LEFT              | 1   |
| 7   | 6302790 | BEVEL GEAR                    | 1   |
| 8   | 6303150 | SHAFT, 0.062" OFFSET-STANDARD | 1   |
|   | 6303160 | SHAFT, 0.042" OFFSET-OPTIONAL | 1   |
| 9   | 6302530 | PIN, BLADE DRIVE – (PIN ONLY) | 2   |

**DISASSEMBLY AND ASSEMBLY:**

REMOVE MOTOR AND PINION GEAR ASSEMBLY (ITEM 12, FIG 2.) PRIOR TO REMOVING SHAFT ASSEMBLY (ITEM 2, FIG. 2). REMOVE VALVE ASSEMBLY (ITEM 13, FIG. 2) AND RETAINING RING (ITEM 3, FIG. 2). MOTOR AND PINION ASSEMBLY WILL SLIDE OUT. REASSEMBLE IN REVERSE ORDER.

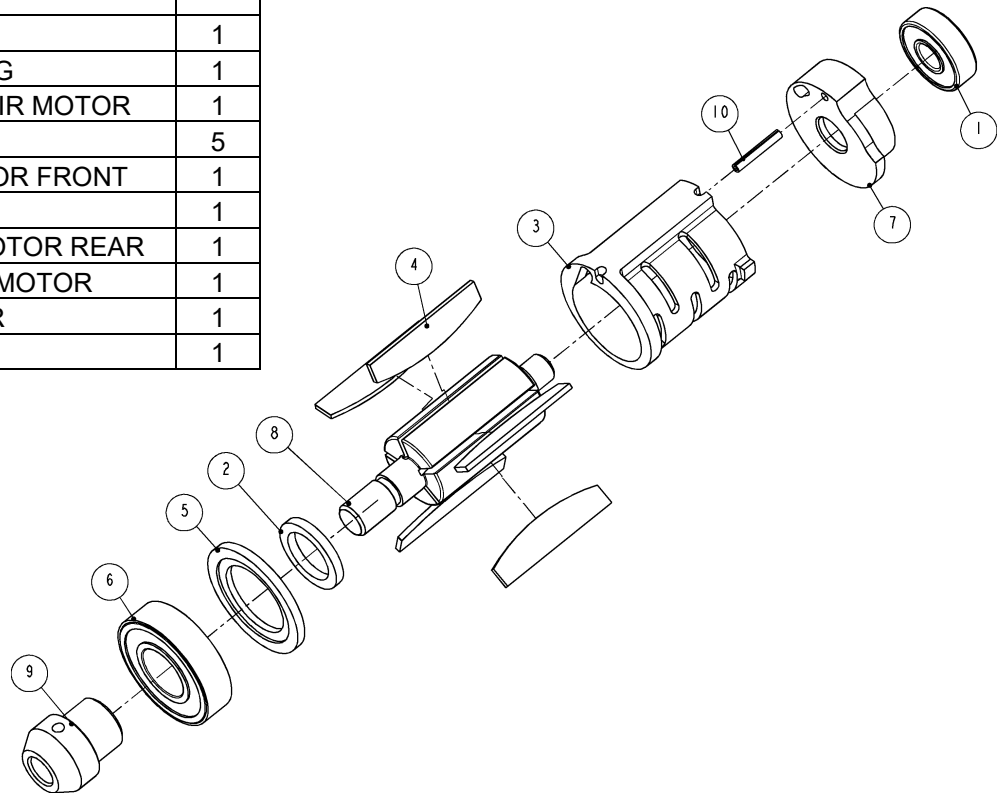
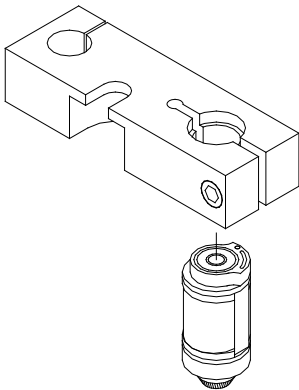
|  |   |   |
|--|---|---|
|  | <p>STEP 1:</p> <p>PLACE SHAFT ASSEMBLY IN DISASSEMBLY TOOL (NO. 450157) AND PRESS OUT SHAFT (ITEM 8, FIG 4.)</p>  | <p>LOCTITE CORP. PRODUCTS "LOCQUIC – PRIMER N" AND ADHESIVE "LOCTITE 242" MUST BE APPLIED TO ITEMS 14, 21, 28, 29 FIG.2, PRIOR TO ASSEMBLY.</p> <p>FOR "PRIMER – N":</p> <p>D. CLEAN PARTS</p> <p>E. SPRAY THREADS ON SCREWS AND MATING PARTS WITH "PRIMER – N"</p> <p>F. ALLOW PRIMER TO DRY 3-5 MINUTES</p> |
|  | <p>STEP 2:</p> <p>TO REMOVE BEARING (ITEM 4, FIG 4) AND LINKS, PLACE SHAFT ASSEMBLY IN DISASSEMBLY TOOL (NO. 450157) AND PRESS OUT SHAFT (ITEM 8, FIG 4.)</p> | <p>FOR "LOCTITE 242":</p> <p>D. CLEAN AND DRY PARTS</p> <p>E. APPLY 242 TO THREADS ON SCREWS AND MATING PARTS</p> <p>F. ASSEMBLE AND LET STAND FOR 30 MINUTES</p>   |

**Figure 4 ECCENTRIC SHAFT ASSAMBLY**

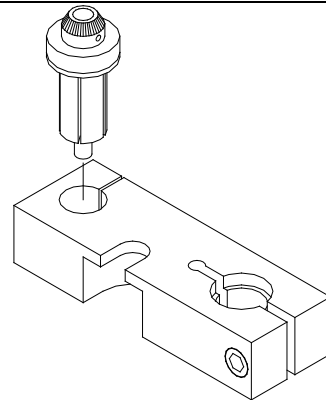


**AIR MOTOR & PINION ASSEMBLY**

| <b>6302610: AIR MOTOR &amp; PINION ASSEMBLY</b> |         |                     |     |
|---|---------|---------------------|-----|
| ITEM  | PART #  | DESCRIPTION         | QTY |
| 1   | 3072380 | BEARING             | 1   |
| 2   | 6300570 | SPACER RING         | 1   |
| 3   | 6300690 | CYLINDER, AIR MOTOR | 1   |
| 4   | 6300700 | VANE                | 5   |
| 5   | 6300720 | PLATE, MOTOR FRONT  | 1   |
| 6   | 6300890 | BEARING             | 1   |
| 7   | 6302410 | END CAP, MOTOR REAR | 1   |
| 8   | 6302420 | ROTOR, AIR MOTOR    | 1   |
| 9   | 6302480 | PINION GEAR         | 1   |
| 10  | 8611600 | PIN                 | 1   |

**MOTOR DISASSEMBLY**

**STEP 1:**  
REMOVE ENDCAP (ITEM 7) BY LOCKING IN LOWER COUNTERBORE OF DISASSEMBLY TOOL (450157). DRIVE END OF ROTOR (ITEM 8) THRU BEARING (ITEM 1) BY USING PIN DRIVER (450153, SEE TOOL SECTION).

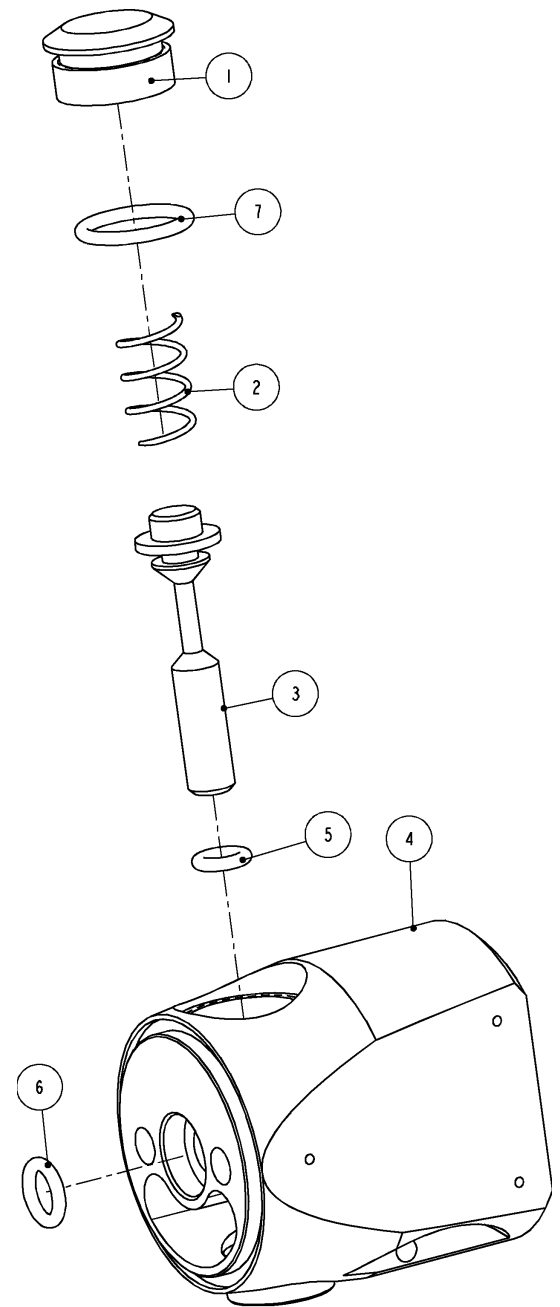
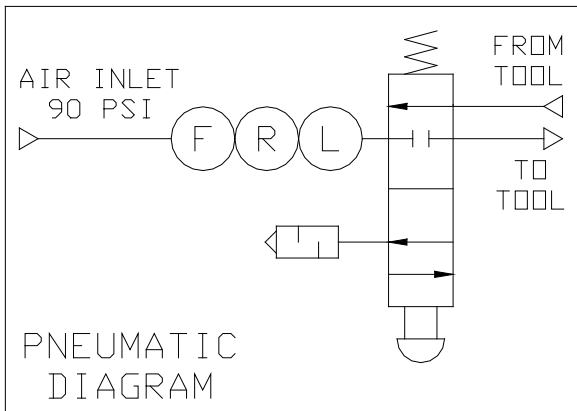


**STEP 2:**  
REMOVE PINION (ITEM 9) BY SLIDING ROTOR INTO KEYED HOLE AND USING SPANNER WRENCH (450155). UNSCREW PINION (RIGHT HAND THREAD). PRESS PINION OUT OF BEARING (ITEM 6) IN ADJACENT HOLE.

**Figure 5 AIR MOTOR & PINION ASSEMBLY**

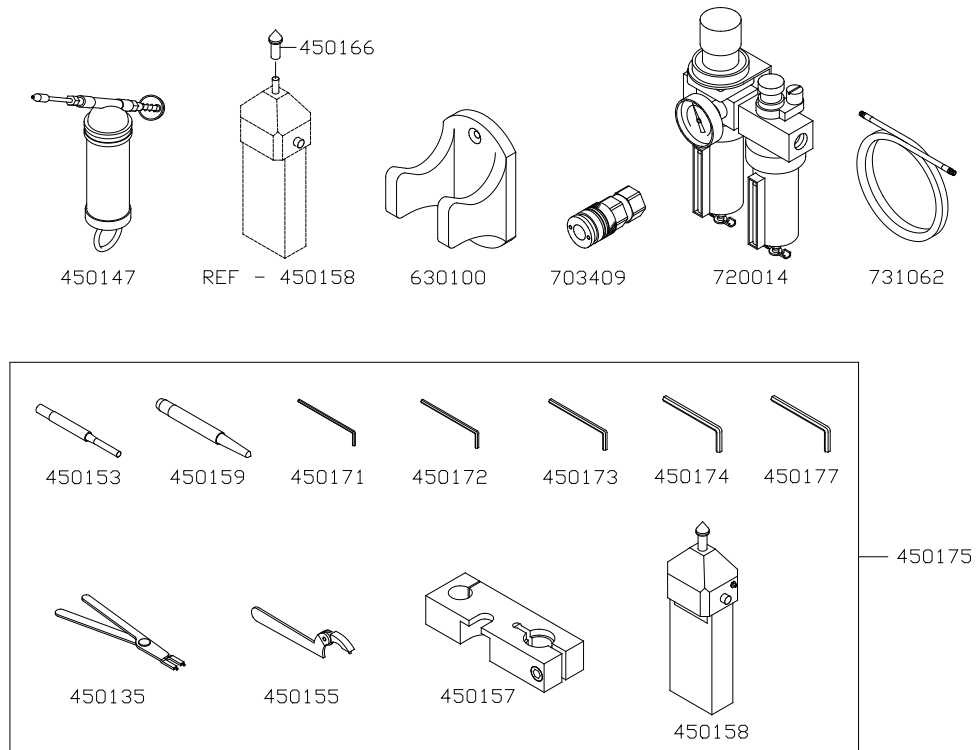
**VALVE ASSEMBLY**

| 6302630: VALVE ASSEMBLY |         |             |     |
|-------------------------|---------|-------------|-----|
| ITEM                    | PART #  | DESCRIPTION | QTY |
| 1                       | 6300770 | VALVE PLUG  | 1   |
| 2                       | 6300800 | SPRING      | 1   |
| 3                       | 6302570 | VALVE STEM  | 1   |
| 4                       | 6302640 | BODY, VALVE | 1   |
| 5                       | 7680080 | O-RING      | 1   |
| 6                       | 7680100 | O-RING      | 1   |
| 7                       | 7680140 | O-RING      | 1   |



**Figure 6 6302630: VALVE ASSEMBLY**

**MAINTENANCE TOOLS**

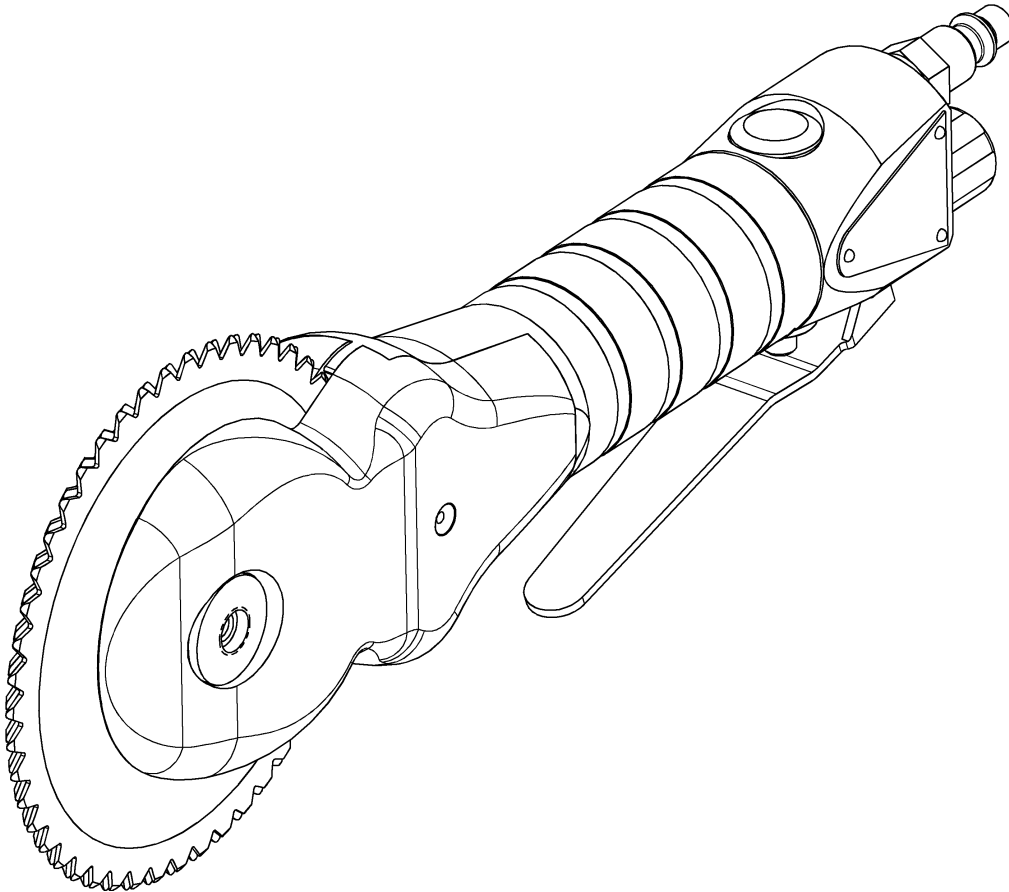


| PART NO. | DESCRIPTION   |
|----------|---|
| 450135   | Pliers  |
| 450147   | Grease Gun  |
| 450153   | Pin Driver  |
| 450155   | Spanner Wrench  |
| 450157   | Disassembly Tool  |
| 450158   | Tachometer (Supplied with 1 Conical Tip - No. 450166)           |
| 450159   | Eccentric Driver  |
| 450166   | Conical Tip   |
| 450171   | Hex Wrench (2 mm)   |
| 450172   | Hex Wrench (2.5 mm)   |
| 450173   | Hex Wrench (4 mm)   |
| 450174   | Hex Wrench (6 mm)   |
| 450175   | Tools - Complete Set (Refer to Picture above for list of tools) |
| 450177   | Hex Wrench (10 mm)  |
| 630100   | Bracket   |
| 703409   | Socket  |
| 720014   | Filter-Regulator-Lubricator                                     |
| 731062   | Hose Assembly   |
| 790304   | Air Oil Mist (1 Pint)   |
| 790305   | Air Oil Mist (1 Gallon)   |
| 790306   | Air Oil Mist (5 Gallon)   |
| 790307   | Grease (White Food Grade)(14.5 oz)                              |

**Figure 7 MAINTENANCE TOOLS**

[ENGLISH]

## GENERAL INFORMATION



### MODELS

**TURBO-III-A DEHIDER (6303000)**

---

### SERVICE CENTERS

**KENTMASTER LTD. (U.K)**  
16 AVONBANK INDUSTRIAL CENTRE  
WEST TOWN ROAD  
AVONMOUTH - BRISTOL BS11 9DE  
UNITED KINGDOM

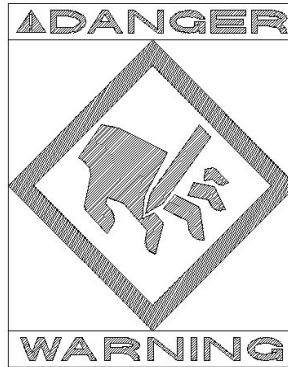
☎ TELEPHONE: ++ 44- (0) 117- 9235035  
FAX: ++ 44- (0) 117- 9829010

**KENTMASTER MFG. CO., INC.**  
1801 SOUTH MOUNTAIN AVE.  
MONROVIA, CALIFORNIA 91016  
UNITED STATES OF AMERICA

☎ TELEPHONE: (626) 359-8888  
FAX: (626) 303-5151

**NOTICE TO EMPLOYER AND PURCHASER OF TOOL**  
**NOTICE TO SAFETY DIRECTOR**

**You have purchased a powerful tool that, if misused, can cause severe injury and harm to your employees. You must instruct your employees in the safe and proper use of this tool and to follow the safety procedures and instructions that have been supplied by the manufacturer of this tool. Please follow the following instructions.**



1. Instruct tool operators to test the tool each day before using it to be sure it does not malfunction. Remove and repair any tool that malfunctions.
2. Instruct tool operators to immediately stop using a tool that malfunctions or is defective.
3. Instruct personnel to immediately remove all tools that malfunction. Be sure to disconnect tool from power supply.
4. Instruct all personnel to stay clear of tool, and not to stand or walk in front of, or next to tool when in use.
5. Point out to all personnel the dangers related to the misuse of tool and the importance of following safety procedures and instructions.
6. Do not make, or allow others to make, alterations or modifications to this tool. Replace all lost or illegible labels.
7. Follow all safety, installation and maintenance instructions provided with this tool. Establish proper safety procedures in accordance with local and national requirements to prevent accidental energizing of tool that can cause injuries.
8. If this tool is sold or change in ownership takes place, you must provide the new owner all safety instructions, notices and maintenance instructions you were originally provided. You can obtain additional copies of the instructions from Kentmaster, free of charge upon request.
9. Give copies of instructions to:
  - (A) Tool Operators**
  - (B) Maintenance Supervisor**
  - (C) Clean-up Supervisor**

## Kentmaster Worldwide Location

Kentmaster Equipment (Aust) PTY.LTD.  
Unit 2,24 Central Court  
Browns Plains Qld. 4118  
Australia

Telephone: (07) 3806-8400  
Fax: (07) 3806-7933  
[Australia@Kentmaster.com](mailto:Australia@Kentmaster.com)

---

Kentmaster do Brasil, Ltda.  
Av. Dr. Joao Teodoro No. 805  
Bairro De Vila Rezende  
13405-240 Piracicaba, SP,  
Brazil

Telephone #1: (019) 3 413 3113  
Telephone #2: (019)983-4973  
Fax: (019) 3 413 3113  
[Brazil@Kentmaster.com](mailto:Brazil@Kentmaster.com)

---

Kentmaster (IRL) LTD.  
Benamore, Dublin Road.  
Roscrea,  
CO, Tipperary,  
Ireland

Telephone: (353) 0505-23292  
Fax: (353) 0505-23299  
[Ireland@Kentmaster.com](mailto:Ireland@Kentmaster.com)

---

Kentmaster Equipment (NZ) LTD.  
5 Cooper Street  
Havelock North  
New Zealand

Telephone #1: (64) 6 8777 857  
Telephone #2: 0800 KENTMASTER  
Fax: (64) 6 8777 858  
[NewZealand@Kentmaster.com](mailto:NewZealand@Kentmaster.com)

Kentmaster South Africa (PTY) LTD.  
Johannesburg - S. Africa  
Unit 54 Sunnyrock Park  
Sunrock Close, Germiston  
South Africa

Telephone: (27) 11-455-3748  
Fax: (27) 11-455-3749  
[SouthAfrica@Kentmaster.com](mailto:SouthAfrica@Kentmaster.com)

---

Kentmaster (UK ) LTD.  
Unit 16 Avonbank Ind. Centre  
West Town Rd, Avonmouth-Bristol,  
BS11 9DE  
England

Telephone: (44) 117-923-5035  
Fax: (44)-117-932-9010  
[UK@Kentmaster.com](mailto:UK@Kentmaster.com)

---

Kentmaster Mfg. Co., Inc.  
1801 South Mountain Ave.  
Monrovia, CA, 91016  
USA

Telephone #1: (626) 359-8888  
Telephone #2: (800) 421-1477  
Fax: (626) 303-5151  
[info@Kentmaster.com](mailto:info@Kentmaster.com)

---

Kentmaster Omaha  
4417 South 139th Street  
Omaha, NE, 68137  
USA

Telephone #1: (402) 896-3355  
Telephone #2: (800) 367-3181  
Fax: (402) 896-3311  
[Omaha@Kentmaster.com](mailto:Omaha@Kentmaster.com)

**INDEX**

*OPERATING AND SAFETY INSTRUCTIONS*..... 2

    OPERATING INSTRUCTIONS.....3

    MAINTENANCE.....3

    BLADE REMOVAL AND CLEANING.....4

    SERVICE.....5

*PARTS BOOK*..... 6

    MODEL TURBO-III-A DEHIDER.....6

    ECCENTRIC SHAFT ASSEMBLY .....8

    AIR MOTOR & PINION ASSEMBLY .....9

    VALVE ASSEMBLY.....10

    MAINTENANCE TOOLS .....11

*NOTICE TO EMPLOYER AND PURCHASER OF TOOL*..... 13

*Kentmaster Worldwide Location* ..... 14

*INDEX*..... 15

*FIGURES - INDEX*..... 15

**FIGURES - INDEX**

Figure 1 BLADE REMOVAL .....4

Figure 2 6303000: MODEL TURBO-III-A.....6

Figure 3 BOM FOR MODEL TURBO-III-A.....7

Figure 4 ECCENTRIC SHAFT ASSAMBLY.....8

Figure 5 AIR MOTOR & PINION ASSEMBLY .....9

Figure 6 6302630: VALVE ASSEMBLY .....10

Figure 7 MAINTENANCE TOOLS .....11